



C A L I F O R N I A

DEPARTMENT OF JUSTICE

CURES  
X

**CURES Information Exchange Web Service**

**Implementation Guide v.4.9**

**May 2024**

REVISION RECORD		
DATE	REVISION	CHANGE REFERENCE
05/31/2024	4.9	1. <b>Section 6.1:</b> HTTP header must include <b>Content-Type</b> with a value of <b>application/xml</b> .  <b>Published Version.</b> Document posted to public website: 06/07/2024
02/13/2024	4.8	1. <b>Section 3.2:</b> All certificates must be in .pem format <b>without</b> the intermediate and root.
09/01/2023	4.7	1. <b>Section 3.1.1:</b> Supported TLS versions— TLS 1.2 and 1.3.  2. <b>Section 3.2:</b> New certificate format (.pem) and with full certificate chain required.
04/20/2023	4.6	1. <b>Section 2.1, Section 2.3:</b> Added information about Interstate search permissions.  2. <b>Section 7.3:</b> New Status messages added for Interstate queries (Status Code = 000/Description Code = 210; Error Code = 900/Description Code = 144).  3. <b>Section 7.3:</b> New Status message when /patients and /prescriptions requestor do not match (Status Code = 000/Description Code = 144).  4. <b>Section 8.1:</b> Added information about Interstate search permissions and an RxHistoryRequest message is required for each individual state. Requestors must declare the state to query.  5. <b>Section 8.1:</b> When providing Postal Code as search criteria, postal code must be 5 digits.  6. <b>Section 4, Section 5.1, Section 8.6.2, 8.8, 8.9.1, 8.9.2:</b> Updated Interstate RxHistoryRequest and RxHistoryResponse XMLs to show that only one state can be queried.  <b>Published Version.</b> Document posted to public website: 04/25/2023
04/18/2022	4.5	1. <b>Section 8.1:</b> Logic implemented to adjust StartDate and EndDate for requests generated from other time zones.  <b>Published Version.</b> Document posted to public website: 04/20/2022
11/01/2021	4.4	1. <b>Section 5.1.1, 5.1.2, 5.1.3, 5.1.4, 5.2.1, 5.2.2, 5.3.1, 5.4.1:</b> Removed <Security> segment from the Response data mapping tables.  2. <b>Section 5.3:</b> Revised Identification Number to License Number reference for clarity.  3. <b>Section 8.6.1, 8.6.2, 8.7.1, 8.7.2, 8.7.3, 8.7.4, 8.8, 8.9.1, 8.9.2, 8.9.3, 8.9.4, 9.4, 9.5, 10.2, 10.3, 11.2:</b> Cleaned up sample values in the <Header> segment field to be consistent with the request. Removed self-closing <receiver> tag from sample requests where applicable.  4. <b>Section 8.7.3, 8.7.4, 8.9.3, 8.9.4, 8.10, 10.3, 11.3:</b> Removed <Security> segment from the sample XML responses.  <b>Published Version.</b> Document posted to public website: 04/11/2022
10/05/2021	4.3	<b>CURES Data Response Update:</b>

REVISION RECORD		
DATE	REVISION	CHANGE REFERENCE
		<ol style="list-style-type: none"> <li>1. <b>Section 5.1.1, 5.2.1:</b> If <b>Date Sold</b> was not reported to CURES default value is presented</li> <li>2. <b>Section 5.2.1:</b> Updated <code>/iews/prescriptions</code> response for the NCPDP notes element to include Refills Authorized (for consistency with Section 5.1.1)</li> <li>3. <b>Section 8.2.1:</b> Added data disclaimer and note that key values may be truncated.</li> </ol> <p><b>Interstate Data Request/Response Updates:</b></p> <ol style="list-style-type: none"> <li>4. <b>Section 2.3:</b> Updated Interstate data overview description</li> <li>5. <b>Section 2.3.1:</b> Updated description for Use Case 2 to include Interstate data requests</li> <li>6. <b>Section 5.1:</b> If Gender ('M' or 'F') and/or address are included in Interstate data requests, they are ignored.</li> <li>7. <b>Section 5.1.3:</b> Updated description for the <b>Patient</b> section. Added NIEM mapping.</li> <li>8. <b>Section 5.1.3, 5.2.2:</b> <b>Date Sold</b> is a default value</li> <li>9. <b>Section 5.1.4:</b> New section added to present elements for an Interstate picklist response with NIEM mapping.</li> <li>10. <b>Section 5.2.2:</b> New section added to present elements for an Interstate response from <code>/iews/prescriptions</code> with NIEM mapping.</li> <li>11. <b>Section 6.1.2:</b> Removed the default search mode for Interstate.</li> <li>12. <b>Section 8.1:</b> Updated details for how Interstate data searches are executed.</li> <li>13. <b>Section 8.2.2:</b> Details added to describe how <b>PatientAccountNumber</b> is used to obtain a PAR</li> <li>14. <b>Section 8.3.1:</b> New section that discusses Interstate single patient matched response</li> <li>15. <b>Section 8.3.2:</b> New section that discusses Interstate multiple patient matched response</li> <li>16. <b>Section 8.9.1:</b> Description added for the Interstate single patient match response XML</li> <li>17. <b>Section 8.9.2:</b> New section added— sample XML for Interstate multiple patients matched response for entities that support a picklist</li> <li>18. <b>Section 8.9.3:</b> New section added— sample XML for Interstate multiple patients matched response for entities that do not support a picklist</li> <li>19. <b>Section 8.9.4:</b> Updated the sample XML response for the scenario where there are no results for an Interstate data request</li> <li>20. <b>Section 9:</b> Updated section to include Interstate data requests via <code>/iews/prescriptions</code></li> </ol>

REVISION RECORD		
DATE	REVISION	CHANGE REFERENCE
09/09/2021	4.2	<ol style="list-style-type: none"> <li>1. <b>Section 5.1.1, Section 5.1.3, Section 5.2.1, Section 8.2.1, Section 8.2.3, Section 8.7.1, Section 8.9.1:</b> IEWS RxHistoryResponse: <b>Drug Description</b> element will contain the <b>drug name, strength, and form</b>. Values separated via a pipe:  </li> <li>2. <b>Section 8.1, 8.2.3:</b> RxHistoryRequests will return a status response if invalid dates/ranges are provided</li> <li>3. <b>Section 8.2.1:</b> Updated to include notes regarding key values separation for <b>Note</b> and <b>Drug Description</b></li> <li>4. <b>Section 7.3:</b> Updated message for description code 4030: Migrated users they must complete their Optimized CURES profile before they can query IEWS</li> </ol>
06/14/2021	4.1	<p>Substantive updates per Optimized CURES, AB528, AB1751:</p> <ol style="list-style-type: none"> <li>1. <b>Figure 1</b> and <b>Figure 2:</b> authentication attributes removed figures.</li> <li>2. <b>Section 2.3</b> and <b>Section 8:</b> <ol style="list-style-type: none"> <li>a. Updated web service URLs and references</li> <li>b. Updated to reflect 24 month query capability. (Removed components that stated queries had to be submitted in 12 month increments)</li> <li>c. Updated to include guidance for Interstate data requests</li> </ol> </li> <li>3. <b>Section 5.1.1 , Section 5.2.1, Section 8:</b> <ol style="list-style-type: none"> <li>a. Updated to accommodate Non-DEA Practitioner requests.</li> <li>b. Updated authentication for Prescribers.</li> <li>c. Updates to accommodate Interstate data requests</li> </ol> </li> <li>4. <b>Section 5.1.1, Section 5.2.1, Section 8.7.1, Section 9.5:</b> <ol style="list-style-type: none"> <li>a. <b>Payment Type, Refill Number, and Prescription Number</b> moved from Notes tag and into designated tags.</li> <li>b. <b>Payment Type</b> will be returned as a coded value</li> <li>c. Added <b>NDC, Prescriber City, Pharmacy Address/City/State/Zip Code</b></li> </ol> </li> <li>5. <b>Section 8.8, Section 8.9:</b> Updated to include Interstate data responses</li> <li>6. <b>Section 5.1.2, Section 8.7.2:</b> <ol style="list-style-type: none"> <li>a. Picklist response updated to include <b>Species Code, RX Count, and Animal Name</b>.</li> </ol> </li> <li>7. <b>Section 9.1 and Section 9.5:</b> <ol style="list-style-type: none"> <li>a. PAR response for a patient identity from picklist excludes address unless the patient's address is populated into the request. System echos the address provided if PAR request follows a picklist response.</li> </ol> </li> <li>8. <b>Section 6:</b> updated to remove payload formats that are not supported</li> <li>9. <b>Section 10:</b></li> </ol>

REVISION RECORD		
DATE	REVISION	CHANGE REFERENCE
		<ul style="list-style-type: none"> <li>a. User status verification for Prescribers updated</li> <li>b. Non-DEA Practitioners</li> </ul>
10/30/2020	4.0	1. <b>Section 3:</b> Changed authentication method to mutual authentication.

TABLE OF CONTENTS

1 INTRODUCTION..... 9

    1.1 PURPOSE..... 9

2 SYSTEM OVERVIEW ..... 9

    2.1 SYSTEM BACKGROUND ..... 9

    2.2 DEFINITIONS, ACRONYMS, AND ABBREVIATIONS..... 9

    2.3 APPLICATION OVERVIEW ..... 11

        2.3.1 Patient/Prescriptions..... 12

        2.3.2 Account Status Check ..... 14

3 AUTHENTICATION ..... 15

    3.1 SECURITY LAYERS..... 15

        3.1.1 Network Communication Security ..... 15

        3.1.2 Access Security ..... 15

    3.2 MUTUAL AUTHENTICATION..... 15

4 AUDITING ..... 18

    4.1 AUDIT DATA ..... 18

5 DATA MAPPING..... 19

    5.1 /IEWS/PATIENTS - REQUEST MAPPING OF CURES AND INTERSTATE DATA TO NCPDP FORMAT..... 19

        5.1.1 /iews/patients (CURES Data Response for Single Patient Matched) - Response Mapping of CURES Data to NCPDP Format..... 20

        5.1.2 /iews/patients (CURES Data Response for Multiple Patients Matched) - Response Mapping of CURES Data to NCPDP Format..... 22

        5.1.3 /iews/patients (Interstate Data Response for Single Patient Matched) –Response Mapping of Interstate Data to NCPDP Format ..... 25

        5.1.4 /iews/patients (Interstate Data Response for Multiple Patients Matched) - Response Mapping of CURES Data to NCPDP Format..... 28

    5.2 /IEWS/PRESCRIPTIONS (CURES AND INTERSTATE DATA REQUEST FOR PICKLIST PATIENTS) - REQUEST MAPPING OF CURES AND INTERSTATE DATA TO NCPDP FORMAT..... 30

        5.2.1 /iews/prescriptions (CURES Data Response for Patient from Picklist) – Response Mapping of CURES Data to NCPDP Format..... 31

        5.2.2 /iews/prescriptions (Interstate Data Response for Patient from Picklist) – Response Mapping of CURES Data to NCPDP Format..... 33

    5.3 /IEWS/USERS-STATUS - REQUEST MAPPING OF CURES DATA TO NCPDP FORMAT ..... 36

        5.3.1 /iews/users-status - Response Mapping of CURES Data to NCPDP Format..... 37

    5.4 /IEWS/ENTITY-STATUS - REQUEST MAPPING OF CURES DATA TO NCPDP FORMAT ..... 38

        5.4.1 /iews/entity-status - Response Mapping of CURES Data to NCPDP Format..... 38

6	HTTP HEADER .....	40
6.1	HTTP HEADER .....	40
6.1.1	Sample Header: .....	40
6.1.2	Default Values: .....	40
7	ERROR AND STATUS CODES .....	41
7.1	TRANSACTION CODES.....	41
7.3	STATUS/ERROR CODES.....	42
8	/IEWS/PATIENTS .....	45
8.1	/IEWS/PATIENTS OVERVIEW .....	45
8.2	CURES DATA RESPONSE .....	47
8.2.1	Single Patient Matched .....	47
8.2.2	Multiple Patients Matched.....	47
8.2.3	Status Message Response .....	47
8.3	INTERSTATE DATA RESPONSE.....	48
8.3.1	Single Patient Matched .....	48
8.3.2	Multiple Patients Matched.....	49
8.4	FAILED REQUEST .....	49
8.5	ERRED REQUEST .....	49
8.6	/IEWS/PATIENTS : CURES DATA REQUEST SAMPLES .....	49
8.6.1	CURES Data: Prescriber/Non-DEA Practitioner Request .....	49
8.6.2	CURES Data: Pharmacist Request.....	50
8.7	/IEWS/PATIENTS: CURES DATA RESPONSE SAMPLES .....	51
8.7.1	CURES Data: One Patient Entity Result – Prescription Data Response .....	51
8.7.2	CURES Data: Multiple Patients Matched (for Picklist) Response .....	56
8.7.3	CURES Data: Multiple Patients Matched (for Non-Picklist) Response .....	59
8.7.4	CURES Data: No Result (Status Response) .....	59
8.8	/IEWS/PATIENTS: INTERSTATE DATA REQUEST SAMPLE .....	59
8.9	/IEWS/PATIENTS: INTERSTATE DATA RESPONSE SAMPLES.....	61
8.9.1	Interstate: One Patient Entity Result – Prescription Data Response .....	61
8.9.2	Interstate: Multiple Patients Matched (for Picklist) Response .....	67
8.9.3	Interstate: Multiple Patients Matched (for Non-Picklist) Response .....	69
8.9.4	Interstate: No Patient-Prescription Result Response Sample .....	70
8.10	/IEWS/PATIENTS: ERROR/STATUS RESPONSE SAMPLE.....	70
9	/IEWS/PRESCRIPTIONS .....	71

9.1	/IEWS/PRESCRIPTIONS OVERVIEW .....	71
9.2	FAILED REQUEST .....	72
9.3	ERRED REQUEST .....	72
9.4	/IEWS/PRESCRIPTIONS: REPORT REQUEST SAMPLE.....	72
9.5	/IEWS/PRESCRIPTIONS: RESPONSE SAMPLE.....	73
9.6	/IEWS/PRESCRIPTIONS: RESPONSE ERROR/STATUS SAMPLE.....	79
10	/IEWS/USERS-STATUS .....	80
10.1	/IEWS/USERS-STATUS OVERVIEW .....	80
10.2	/IEWS/USERS-STATUS: REQUEST SAMPLE .....	80
10.3	/IEWS/USERS-STATUS: RESPONSE SAMPLE.....	80
10.4	/IEWS/USERS-STATUS: RESPONSE ERROR SAMPLE.....	81
11	/IEWS/ENTITY-STATUS .....	82
11.1	/IEWS/ENTITY-STATUS OVERVIEW .....	82
11.2	/IEWS/ENTITY-STATUS: REQUEST SAMPLE .....	82
11.3	/IEWS/ENTITY-STATUS: RESPONSE SAMPLE.....	82
11.4	/IEWS/ENTITY-STATUS: RESPONSE ERROR SAMPLE.....	83
12	TESTING .....	84
13	APPENDIX - CODED VALUES .....	86
13.1	PAYMENT TYPE CODES .....	86
13.2	SPECIES CODES.....	86
13.3	INTERSTATE RESPONSE CODES .....	87



## 1 INTRODUCTION

### 1.1 PURPOSE

The purpose of this Implementation Guide is to provide a comprehensive set of instructions to allow integration of Controlled Substance Utilization Review and Evaluation System (CURES) information with qualified Health Information Technology (HIT) systems via the CURES Information Exchange Web service (IEWS).

## 2 SYSTEM OVERVIEW

### 2.1 SYSTEM BACKGROUND

The Controlled Substance Utilization Review and Evaluation System (CURES) is a database containing information about Schedule II, III, IV, and V controlled substances dispensed to patients, as reported by the dispensing pharmacy, clinic, or other dispenser pursuant to Health and Safety Code section 11165(d) or by prescribers, pursuant to Health and Safety Code section 11190(c) ("CURES data"). The CURES Program grants authorized healthcare practitioners and pharmacists access to query the CURES database to assist them in their efforts to ensure appropriate prescribing, ordering, administering, furnishing, and dispensing of controlled substances.

In accordance with Health and Safety Code 11165.1(a)(1)(F), the California Department of Justice (DOJ) has established a method of system integration whereby approved health care practitioners and pharmacists may use a qualified HIT system to access information from CURES. As a prerequisite to system integration, each entity that operates a HIT system must enter into a Memorandum of Understanding (MOU) with the California DOJ, addressing the technical specifications of the system to ensure the security of any data received through CURES and the secure transfer of data from the CURES.

Upon final issuance of regulations, AB1751 authorized the Department of Justice to enter into an agreement with any entity operating an interstate data sharing hub, or any agency operating a prescription drug monitoring program in another state, for purposes of interstate data sharing of prescription information. Accordingly, the CURES IEWS offers authorized healthcare practitioners and pharmacists the ability to request interstate data from those entities operating an interstate data sharing hub, or any agency operating a prescription drug monitoring program in another state, where the entity has an MOU with California DOJ. Not all CURES users will be authorized to access another state's PDMP records, as these permissions are granted by the other state.

### 2.2 DEFINITIONS, ACRONYMS, AND ABBREVIATIONS

The Definitions, Acronyms, and Abbreviations section lists terms used in the document.

TERM/ABBREVIATION	DESCRIPTION
API	Application Program Interface

TERM/ABBREVIATION	DESCRIPTION
CSR	Certificate Signing Request
CURES	Controlled Substance Utilization Review and Evaluation System
DEA	Drug Enforcement Administration
DOB	Date of Birth
DOJ	Department of Justice
HIT	Health Information Technology
HTTP	Hypertext Transfer Protocol
HTTPS	HTTPS is not, strictly, a separate protocol, as the data is still transferred using HTTP; however, instead of using plain text socket communication, the session data is encrypted using a version of the Secure Socket Layer (SSL)/Transport Layer Security (TLS) protocols, thus ensuring reasonable protection more than the HTTP
Interstate Data Sharing Hub	Hubs that facilitate interstate data sharing.
IP	Internet Protocol
MOU	Memorandum of Understanding
NCPDP	National Council for Prescription Drug Programs
PAR	Patient Activity Report
PDMP	Prescription Drug Monitoring Program
PKI	Public Key Infrastructure
REST	Representational state transfer
SSL	Secure Socket Layer
TLS	Transport Layer Security
XML	Extensible Markup Language

### 2.3 APPLICATION OVERVIEW

The CURES Program provides system integration with the HIT community through RESTful web services. Information is exchanged using NCPDP SCRIPT 2017071 standard.

The following web service endpoints are available:

WEB SERVICE URL	WEB SERVICE DESCRIPTION
/iews/patients	<p>This web service supports two types of requests.</p> <p><b>1. CURES Data:</b> Searches the California CURES database for patient-prescription information for a given period using partial or exact match modes. Searches can be executed for the past 24 months.</p> <p><b>2. Interstate Data:</b> Searches other state PDMPs via an Interstate data-sharing hub for patient-prescription information for a given period. The requested state PDMPs execute the search per their defined search mode (exact or fuzzy/partial). Searches can be executed for the past 24 months.</p> <p>Not all CURES users will be authorized to access another state’s PDMP records, as these permissions are granted by the other state.</p> <p>CURES Data requests and Interstate Data requests cannot be comingled.</p>
/iews/prescriptions	<p>For a HIT system that can support a picklist: the Patient Account Number(s) from the <b>/iews/patients</b> (RxHistoryResponse message) is used to obtain a patient activity report (PAR) via this endpoint.</p>
/iews/users-status	<p>Retrieves the CURES user account status.</p>
/iews/entity-status	<p>Retrieves the HIT system account status.</p>

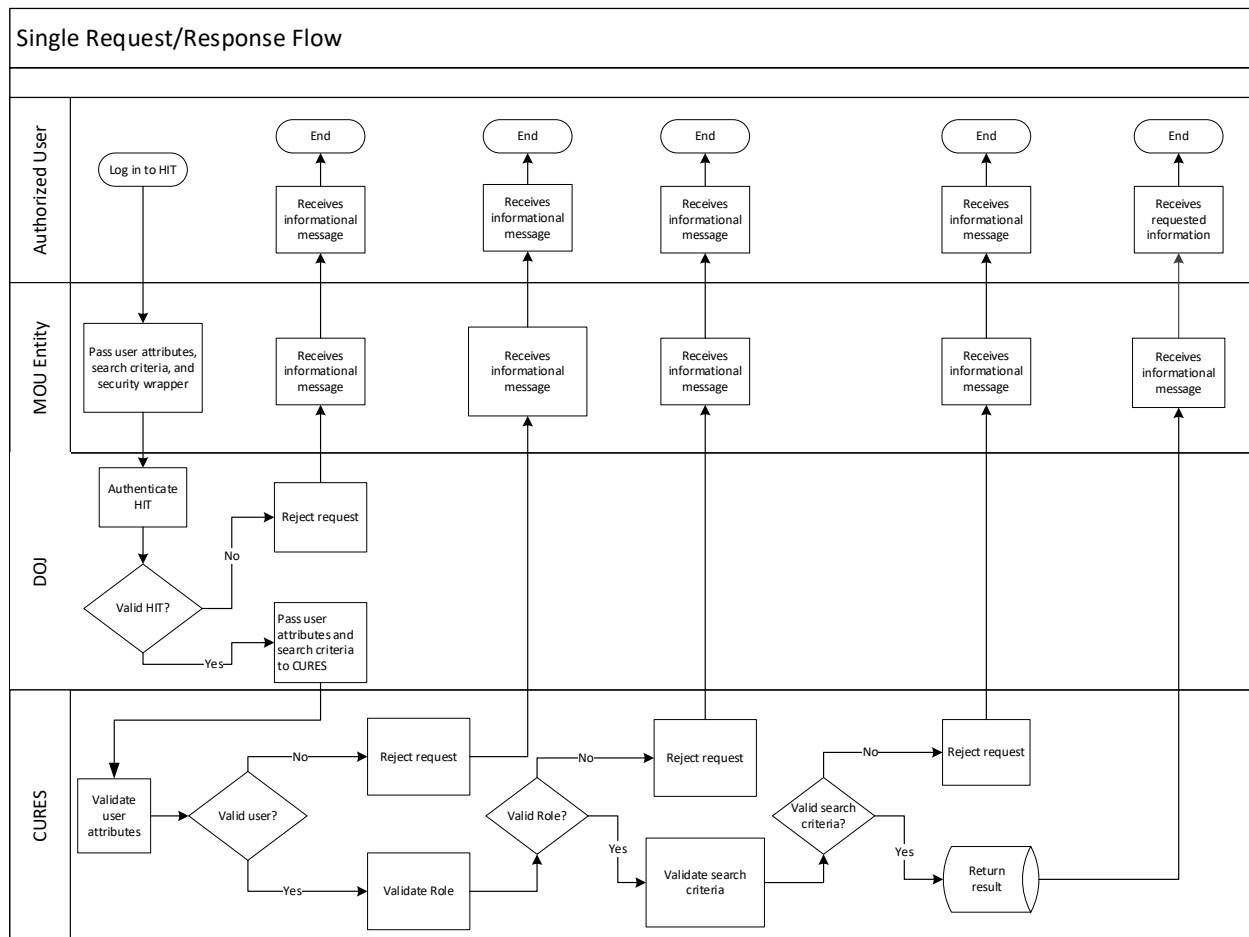
### 2.3.1 Patient/Prescriptions

The CURES IEWS supports two patient-prescription search use cases:

#### Query Use Case 1 – CURES and Interstate Data: Patient Match/Response

- Use Case 1 follows the NCPDP standard where every **/iews/patients** request returns a single response. Interstate data requests are supported via this use case.
  - CURES data request: the result will be a status message stating there is no match, or the response will return all of the prescription history associated to a *single* matched entity via a RxHistoryResponse message. (Refer [Status/Error Codes](#) for details.)
  - Interstate data request: the result will be a response via a RxHistoryResponse message.

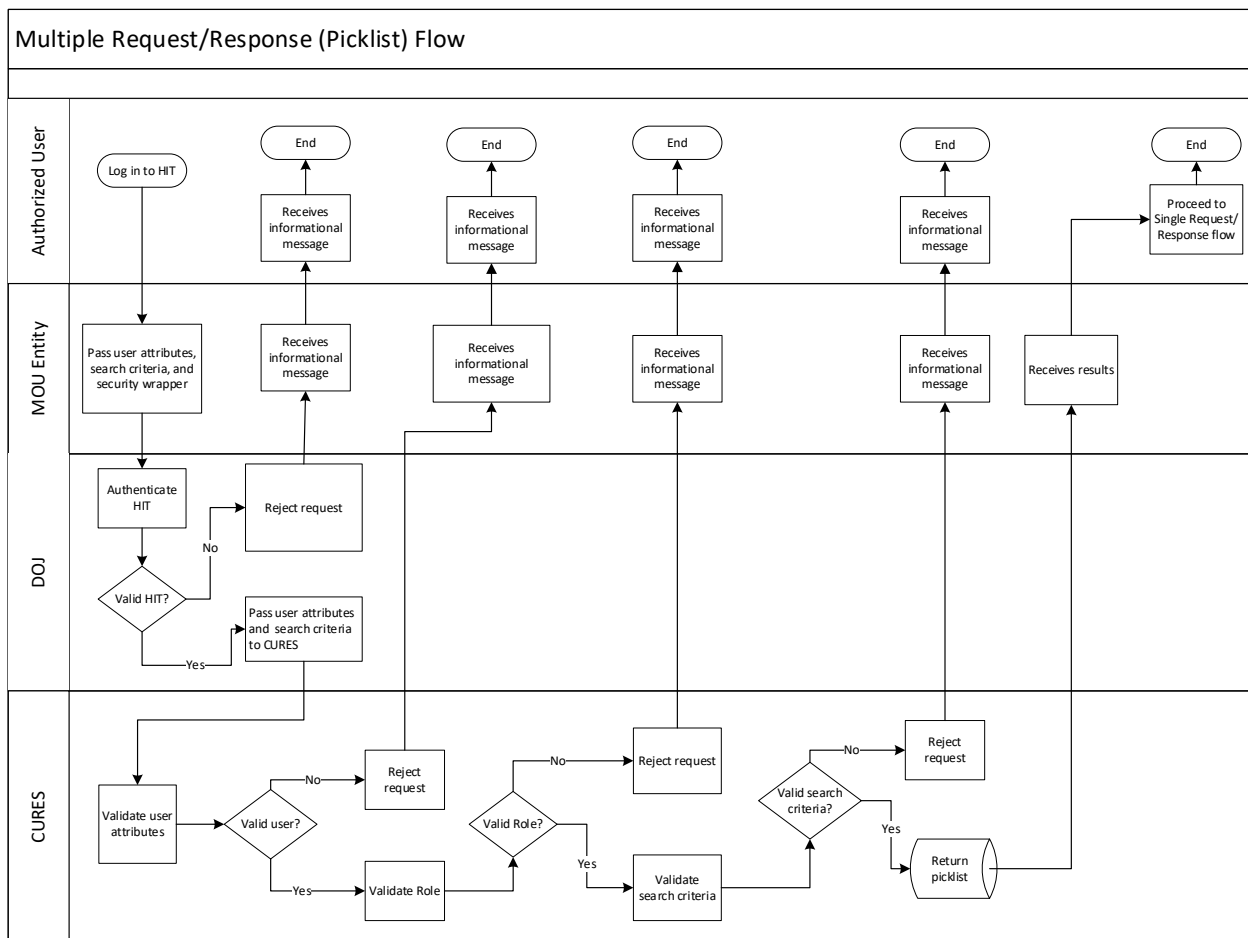
Figure 1 – Single Request/Response



**Query Use Case 2 –CURES and Interstate Data: Multiple Patient Matched (Picklist)**

- Use Case 2 supports multiple patient matched via a picklist. In this use case, a patient search returns multiple entities using the RxHistoryResponse message. The requesting entity would then send one or multiple single requests to retrieve the prescription history associated with the matched entity via the **/iews/prescriptions** web service.
  - For HIT systems that cannot support this functionality, a status message is returned (refer to [Status/Error Codes](#) for details).

**Figure 2 – Multiple Request/Response**



### **2.3.2 Account Status Check**

In addition to the query use cases, the CURES IEWS provides two web services to query for account status via a Verify message. These services allow HIT systems to troubleshoot and alter process flows based on account status:

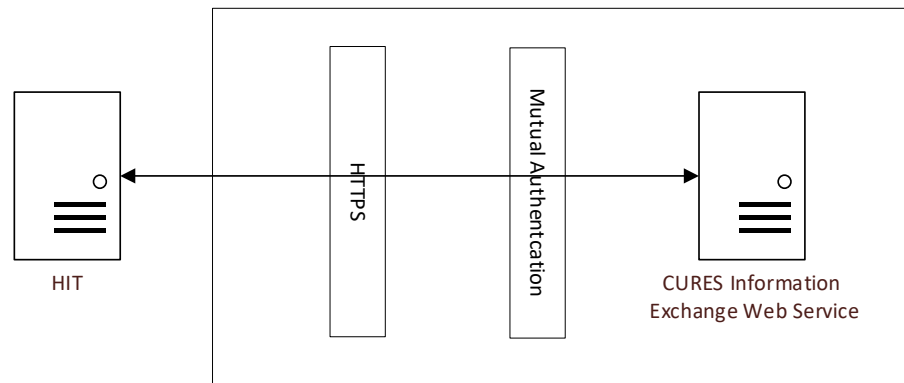
- HIT systems may verify the CURES user account status via the **/IEWS/users-status** web service.
- HIT systems may verify their own account status via the **/IEWS/entity-status** web service.

## 3 AUTHENTICATION

### 3.1 SECURITY LAYERS

The CURES IEWS has two layers of security. Each layer is built on top of the previous layer to ensure the secure exchange of information. Each REST endpoint is stateless, resulting in every request going through all two layers.

Figure 3 – Security Layers



#### 3.1.1 Network Communication Security

Communication between the CURES IEWS and the HIT systems will be over the Internet. As a result, Transport Layer Security (TLS) is required to ensure secure communication between the CURES IEWS and HIT systems. CURES IEWS only supports TLS 1.2 or 1.3.

#### 3.1.2 Access Security

After entering into a MOU with the DOJ, the entity operating the HIT system will be authenticated by their client certificate. HIT systems will also verify that they are talking to the right server by verifying the server certificate. Once authenticated, HIT systems will be provisioned with a CURES IEWS account. Every RESTful web service request should be mutually authenticated to ensure the account is valid and in good standing.

### 3.2 MUTUAL AUTHENTICATION

Mutual authentication, also called two-way authentication, is a process or technology in which both entities in a communications link authenticate each other. In a network environment, the client authenticates the server and vice-versa. In this way, network users can be assured that they are doing business exclusively with legitimate entities and servers can be certain that all would-be users are attempting to gain access for legitimate purposes.

HIT systems need to provide user client certificate to CURES before they can setup connections with CURES. There are a few ways to do this. The typical steps are, 1. Create a CSR (Certificate Signing Request). 2. Get the CSR signed. 3. Convert the certificates to the right formats.

Before creating certificates, HIT systems need to work with CURES Program to decide the CN (Common Name) in certificates. This CN will also be used as the user name in CURES.

Here is an example with OpenSSL software. For more information regarding the OpenSSL, you can view <https://www.openssl.org/>.

- **Create Certificate Signing Request (CSR)**

When creating CSR, MOU entities need to get a Common Name from DOJ. This name will be used as the login ID in Cures.

```
C:\OpenSSL\bin>openssl.exe req -new -newkey rsa:2048 -nodes -days 365 -keyout cures_priv.key -
out cures_svr.csr
Generating a 2048 bit RSA private key
.....+++
.....+++
writing new private key to 'cures_priv.key'
-----
You are about to be asked to enter information that will be incorporated
into your certificate request.
What you are about to enter is what is called a Distinguished Name or a DN.
There are quite a few fields but you can leave some blank
For some fields there will be a default value,
If you enter '.', the field will be left blank.
-----
Country Name (2 letter code) [AU]:US
State or Province Name (full name) [Some-State]:California
Locality Name (eg, city) []:Sacramento
Organization Name (eg, company) [Internet Widgits Pty Ltd]:DOJ
Organizational Unit Name (eg, section) []:CURES
Common Name (e.g. server FQDN or YOUR name) []:MOUTEST
Email Address []:john.feng@doj.ca.gov

Please enter the following 'extra' attributes
to be sent with your certificate request
A challenge password []:Password
An optional company name []:

C:\OpenSSL\bin>
```

- **Sign the CSR**

The generated CSR must be signed by a public Certificate Authority (CA). Each organization may have different policies on which CA they choose. Please work with your security group on signing the CSR



for your specified operating system. After the CSR is signed, please provide the public certificate to DOJ. All certificates must be in **.pem** format **without** the intermediate and root.

## 4 AUDITING

### 4.1 AUDIT DATA

The HIT system is required to provide the following details for every patient request:

#### 1. User Data

- a) The date of the query.
- b) The time of the query.
- c) Requesting entity operating the HIT system.
- d) Identification information of the Prescriber, Non-DEA Practitioner, or Pharmacist for whom the system is making the query.

#### 2. Required Query Data

- a) Patient First Name.
- b) Patient Last Name.
- c) Patient Gender.
- d) Patient Date of Birth.

The HIT system may provide the following optional data fields:

- a) Patient Street Address.
- b) Patient City.
- c) Patient State/Province.
- d) Patient Postal Code (5 digits).
- e) PDMP State for an interstate data query.

The CURES IEWS captures all of this information. The application also tracks patient searches and the associated PARs.

## 5 DATA MAPPING

The CURES IEWS uses the following mapping to transform data from CURES to the NCPDP request and response messages.

### 5.1 /IEWS/PATIENTS - REQUEST MAPPING OF CURES AND INTERSTATE DATA TO NCPDP FORMAT

Section		CURES	NCPDP	Attribute	Required/Optional	
Message	Message	Message	SCRIPT.Message	DatatypesVersion="20170715" TransportVersion="20170715" TransactionVersion="20170715" StructuresVersion="20170715" ECLVersion="20170715" TransactionDomain="SCRIPT"	Required	
	Header	Message Envelope	Recipient of the Message	SCRIPT.Message.Header.To	Qualifier="ZZZ"	Required
			HIT System Identifier	SCRIPT.Message.Header.From	Qualifier="ZZZ"	Required
			Unique MessageID	SCRIPT.Message.Header.MessageID		Required
			Sent Date/Time	SCRIPT.Message.Header.SentTime		Required
			User ID of the Requesting Entity	SCRIPT.Message.Header.Security.UsernameToken.Username		Required
			HIT System Hospital/Facility	SCRIPT.Message.Header.Security.Sender.SecondaryIdentification		Required
			Description of Facility (Emergency, ICU)	SCRIPT.Message.Header.Security.Sender.TertiaryIdentification		Optional
			Sender Software Developer	SCRIPT.Message.Header.SenderSoftware.SenderSoftwareDeveloper		Required
			Sender Software Product	SCRIPT.Message.Header.SenderSoftware.SenderSoftwareProduct		Required
			Sender Software Version Release	SCRIPT.Message.Header.SenderSoftware.SenderSoftwareVersionRelease		Required
	Body	Patient	Benefits Coordination	Consent	SCRIPT.Message.Body.RxHistoryRequest.BenefitsCoordination.Consent [value = Y]	Required
			Patient Last Name	SCRIPT.Message.Body.RxHistoryRequest.Patient.HumanPatient.Name.LastName		Required
			Patient First Name	SCRIPT.Message.Body.RxHistoryRequest.Patient.HumanPatient.Name.FirstName		Required
			Patient Gender – A value must be specified: U = Unspecified F = Female M = Male	SCRIPT.Message.Body.RxHistoryRequest.Patient.HumanPatient.Gender [value = U, F, or M]		Required • If 'M' or 'F' is specified for Interstate data requests, it is ignored.
Patient DOB – YYYY-MM-DD			SCRIPT.Message.Body.RxHistoryRequest.Patient.HumanPatient.DateOfBirth.Date		Required	
Patient Address			SCRIPT.Message.Body.RxHistoryRequest.Patient.HumanPatient.Address.AddressLine1		• Optional for CURES data requests • Ignored if provided for Interstate data requests	
Patient City			SCRIPT.Message.Body.RxHistoryRequest.Patient.HumanPatient.Address.City		• Optional for CURES data requests • Ignored if provided for Interstate data requests	
Patient State/Province – 2 character state/province abbreviation	SCRIPT.Message.Body.RxHistoryRequest.Patient.HumanPatient.Address.StateProvince		• Optional for CURES data requests • Ignored if provided for Interstate data requests			

Section		CURES	NCPDP	Attribute	Required/Optional	
		Patient Postal Code – 5 digit postal code	SCRIPT.Message.Body.RxHistoryRequest.Patient.HumanPatient.Address.PostalCode		<ul style="list-style-type: none"> <li>Optional for CURES data requests</li> <li>Ignored if provided for Interstate data requests</li> </ul>	
	Requesting User	<b>Prescriber and Non-DEA Practitioner</b>				
		Prescriber/Non-DEA Practitioner State License Number	SCRIPT.Message.Body.RxHistoryRequest.Prescriber.NonVeterinarian.Identification.StateLicenseNumber		Required if Prescriber or Non-DEA Practitioner	
		Prescriber DEA Number	SCRIPT.Message.Body.RxHistoryRequest.Prescriber.NonVeterinarian.Identification.DEANumber		Optional	
		Prescriber/Non-DEA Practitioner NPI	SCRIPT.Message.Body.RxHistoryRequest.Prescriber.NonVeterinarian.Identification.NPI		Required if Prescriber or Non-DEA Practitioner	
		Prescriber/Non-DEA Practitioner Last Name	SCRIPT.Message.Body.RxHistoryRequest.Prescriber.NonVeterinarian.Name.LastName		Required if Prescriber or Non-DEA Practitioner	
		Prescriber/Non-DEA Practitioner First Name	SCRIPT.Message.Body.RxHistoryRequest.Prescriber.NonVeterinarian.Name.FirstName		Required if Prescriber or Non-DEA Practitioner	
		<b>Pharmacist</b>				
		Pharmacist State License Number	SCRIPT.Message.Body.RxHistoryRequest.Pharmacy.Pharmacist.Identification.StateLicenseNumber		Required if Pharmacist	
		Pharmacist Last Name	SCRIPT.MessageBody.RxHistoryRequest.Pharmacy.Pharmacist.Name.LastName		Required if Pharmacist	
		Pharmacist First Name	SCRIPT.Message.Body.RxHistoryRequest.Pharmacy.Pharmacist.Name.FirstName		Required if Pharmacist	
	Business Name	SCRIPT.Message.Body.RxHistoryRequest.Pharmacy.BusinessName		Required if Pharmacist		
	Search	Search Period - Range Start	SCRIPT.Message.Body.RxHistoryRequest.RequestedDates.StartDate.Date		Required	
		Search Period - Range End	SCRIPT.Message.Body.RxHistoryRequest.RequestedDates.EndDate.Date		Required	
	Interstate Data Request (required for an Interstate data request)	Other State PDMP to Query	SCRIPT.Message.Body.RxHistoryRequest.PDMPStatesRequested.StateProvince		Optional	

**5.1.1 /iews/patients (CURES Data Response for Single Patient Matched) - Response Mapping of CURES Data to NCPDP Format**

Section		CURES	NCPDP	Attribute
XML Declaration		N/A	N/A	xml version="1.0" encoding="UTF-8" standalone="yes"
Message	Message	Message	SCRIPT.Message	DatatypesVersion="20170715" TransportVersion="20170715" TransactionDomain="SCRIPT" TransactionVersion="20170715" StructuresVersion="20170715" ECLVersion="20170715"
	Header	Recipient of the Message	SCRIPT.Message.Header.To	Qualifier="ZZZ"
		Sender of the Message	SCRIPT.Message.Header.From	Qualifier="ZZZ"
	Message Envelope	Unique MessageID	SCRIPT.Message.Header.MessageID	

Section		CURES	NCPDP	Attribute		
		Relates to MessageID	SCRIPT.Message.Header.RelatesToMessageID [value = MessageID for RxHistoryRequest]			
		Sent Date/Time	SCRIPT.Message.Header.SentTime			
		Sender Software Developer	SCRIPT.Message.Header.SenderSoftware.SenderSoftwareDeveloper			
		Sender Software Product	SCRIPT.Message.Header.SenderSoftware.SenderSoftwareProduct			
		Sender Software Version Release	SCRIPT.Message.Header.SenderSoftware.SenderSoftwareVersionRelease			
	Body	Response	Response	SCRIPT.Message.Body.RxHistoryResponse.Response.Approved		
		Benefits Coordination	Consent	SCRIPT.Message.Body.RxHistoryRequest.BenefitsCoordination.Consent [value = Y]		
		Patient	Patient Account Number	Patient Account Number	SCRIPT.Message.Body.RxHistoryResponse.Patient.HumanPatient.Identification.PatientAccountNumber	
			Last Name	Last Name	SCRIPT.Message.Body.RxHistoryResponse.Patient.HumanPatient.Name.LastName	
			First Name	First Name	SCRIPT.Message.Body.RxHistoryResponse.Patient.HumanPatient.Name.FirstName	
			Gender	Gender	SCRIPT.Message.Body.RxHistoryResponse.Patient.HumanPatient.Gender	
			DOB	DOB	SCRIPT.Message.Body.RxHistoryResponse.Patient.HumanPatient.DateOfBirth.Date	
			Address	Address	SCRIPT.Message.Body.RxHistoryResponse.Patient.HumanPatient.Address.AddressLine1	
			City	City	SCRIPT.Message.Body.RxHistoryResponse.Patient.HumanPatient.Address.City	
			State/Province	State/Province	SCRIPT.Message.Body.RxHistoryResponse.Patient.HumanPatientAddress.StateProvince	
		Postal Code	Postal Code	SCRIPT.Message.Body.RxHistoryResponse.Patient.HumanPatient.Address.PostalCode		
		Prescription (1..300)	Drug Name, Strength, Form (values separated by   ) Note: if the reported NDC failed validation, the reported NDC is displayed with an asterisk.	Drug Name, Strength, Form (values separated by   ) Note: if the reported NDC failed validation, the reported NDC is displayed with an asterisk.	SCRIPT.Message.Body.RxHistoryResponse.MedicationDispensed.DrugDescription	
			NDC Number (product code)	NDC Number (product code)	SCRIPT.Message.Body.RxHistoryResponse.MedicationDispensed.DrugCoded.ProductCode.Code	
			Product Code Qualifier	Product Code Qualifier	SCRIPT.Message.Body.RxHistoryResponse.MedicationDispensed.DrugCoded.ProductCode.Qualifier [default value = ND]	
			Drug Quantity	Drug Quantity	SCRIPT.Message.Body.RxHistoryResponse.MedicationDispensed.Quantity.Value	
Code List Qualifier	Code List Qualifier		SCRIPT.Message.Body.RxHistoryResponse.MedicationDispensed.Quantity.CodeListQualifier [default value = 87]			
Unit Source Code	Unit Source Code		SCRIPT.Message.Body.RxHistoryResponse.MedicationDispensed.Quantity.QuantityUnitofMeasure.Code [default value = AC]			
Days Supply	Days Supply		SCRIPT.Message.Body.RxHistoryResponse.MedicationDispensed.DaysSupply			
Date Filled	Date Filled		SCRIPT.Message.Body.RxHistoryResponse.MedicationDispensed.LastFillDate.Date			
Substitutions	Substitutions		SCRIPT.Message.Body.RxHistoryResponse.MedicationDispensed.Substitutions [default value = 0]			
Species Code; Refills Authorized (values separated by ;)	Species Code; Refills Authorized (values separated by ;)		SCRIPT.Message.Body.RxHistoryResponse.MedicationDispensed.Note			
Pharmacy NCPDPID	Pharmacy NCPDPID	SCRIPT.Message.Body.RxHistoryResponse.MedicationDispensed.Pharmacy.Identification.NCPDPID [default value = -]				

Section		CURES	NCPDP	Attribute	
		Pharmacy Number	SCRIPT.Message.Body.RxHistoryResponse.MedicationDispensed.Pharmacy.Identification.StateLicenseNumber		
		Pharmacy NPI	SCRIPT.Message.Body.RxHistoryResponse.MedicationDispensed.Pharmacy.Identification.NPI [default value = -]		
		Pharmacy Name	SCRIPT.Message.Body.RxHistoryResponse.MedicationDispensed.Pharmacy.BusinessName		
		Pharmacy Address	SCRIPT.Message.Body.RxHistoryResponse.MedicationDispensed.Pharmacy.Address.AddressLine1		
		Pharmacy City	SCRIPT.Message.Body.RxHistoryResponse.MedicationDispensed.Pharmacy.Address.Address.City		
		Pharmacy State	SCRIPT.Message.Body.RxHistoryResponse.MedicationDispensed.Pharmacy.Address.StateProvince		
		Pharmacy Postal Code	SCRIPT.Message.Body.RxHistoryResponse.MedicationDispensed.Pharmacy.Address.PostalCode		
		Prescriber DEA	SCRIPT.Message.Body.RxHistoryResponse.MedicationDispensed.Prescriber.NonVeterinarian.Identification.DEANumber		
		Prescriber NPI	SCRIPT.Message.Body.RxHistoryResponse.MedicationDispensed.Prescriber.NonVeterinarian.Identification.NPI [default value = -]		
		Prescriber Name (prescriber name is captured in the First and Last Name fields)	SCRIPT.Message.Body.RxHistoryResponse.MedicationDispensed.Prescriber.NonVeterinarian.Name.LastName		
		Prescriber's Name (prescriber name is captured in the First and Last Name fields)	SCRIPT.Message.Body.RxHistoryResponse.MedicationDispensed.Prescriber.NonVeterinarian.Name.FirstName		
		Prescriber City	SCRIPT.Message.Body.RxHistoryResponse.MedicationDispensed.Prescriber.NonVeterinarian.Address.City		
		Pharmacy Prescription Number Qualifier	SCRIPT.Message.Body.RxHistoryResponse.MedicationDispensed.HistorySource.Source.SourceQualifier [default value = P2]		
		Pharmacy Prescription Number	SCRIPT.Message.Body.RxHistoryResponse.MedicationDispensed.HistorySource.SourceReference		
		Prescription Refill Number	SCRIPT.Message.Body.RxHistoryResponse.MedicationDispensed.HistorySource.FillNumber		
		Payment Type	SCRIPT.Message.Body.RxHistoryResponse.MedicationDispensed.HistorySource.PaymentType		
		Date Sold (if Date Sold was not reported, date value is 1900-01-01)	SCRIPT.Message.Body.RxHistoryResponse.MedicationDispensed.OtherMedicationDate.OtherMedicationDate.Date		
		Date Sold Qualifier	SCRIPT.Message.Body.RxHistoryResponse.MedicationDispensed.OtherMedicationDate.OtherMedicationDateQualifier [default value = SoldDate]		
		Search	Search Time - Range Start	SCRIPT.Message.Body.RxHistoryResponse.RequestedDates.StartDate.Date	
			Search Time - Range End	SCRIPT.Message.Body.RxHistoryResponse.RequestedDates.EndDate.Date	

**5.1.2 /iews/patients (CURES Data Response for Multiple Patients Matched) - Response Mapping of CURES Data to NCPDP Format**

Section		CURES	NCPDP	Attribute
XML Declaration		N/A	N/A	xml version="1.0" encoding="UTF-8" standalone="yes"
Message	Message	Message	SCRIPT.Message	DatatypesVersion="20170715" TransportVersion="20170715" TransactionDomain="SCRIPT" TransactionVersion="20170715" StructuresVersion="20170715"

Section		CURES	NCPDP	Attribute	
Header	Message Envelope	Recipient of the Message	SCRIPT.Message.Header.To	ECLVersion="20170715"	
		Sender of the Message	SCRIPT.Message.Header.From	Qualifier="ZZZ"	
		Unique MessageID	SCRIPT.Message.Header.MessageID	Qualifier="ZZZ"	
		Relates to MessageID	SCRIPT.Message.Header.RelatesToMessageID [value = MessageID for RxHistoryRequest]		
		Sent Date/Time	SCRIPT.Message.Header.SentTime		
		Sender Software Developer	SCRIPT.Message.Header.SenderSoftware.SenderSoftwareDeveloper		
		Sender Software Product	SCRIPT.Message.Header.SenderSoftware.SenderSoftwareProduct		
		Sender Software Version Release	SCRIPT.Message.Header.SenderSoftware.SenderSoftwareVersionRelease		
	Body	Response	Response	SCRIPT.Message.Body.RxHistoryResponse.Response.Denied	
		Benefits Coordination	Consent	SCRIPT.Message.Body.RxHistoryRequest.BenefitsCoordination.Consent [default value = Y]	
		PAR Search Criteria	Patient Last Name	SCRIPT.Message.Body.RxHistoryResponse.Patient.HumanPatient.Name.LastName	
			Patient First Name	SCRIPT.Message.Body.RxHistoryResponse.Patient.Patient.HumanPatient.Name.FirstName	
			Patient Gender	SCRIPT.Message.Body.RxHistoryResponse.Patient.Patient.HumanPatient.Gender	
			Patient DOB	SCRIPT.Message.Body.RxHistoryResponse.Patient.Patient.HumanPatient.DateOfBirth.Date	
			Patient Address	SCRIPT.Message.Body.RxHistoryResponse.Patient.Patient.HumanPatient.Address.AddressLine1	
			Patient City	SCRIPT.Message.Body.RxHistoryResponse.Patient.Patient.HumanPatient.Address.City	
			Patient State/Province	SCRIPT.Message.Body.RxHistoryResponse.Patient.Patient.HumanPatient.Address.StateProvince	
			Postal Code	SCRIPT.Message.Body.RxHistoryResponse.Patient.Patient.HumanPatient.Address.PostalCode	
		Patient Picklist (1...300)	Drug Name	SCRIPT.Message.Body.RxHistoryResponse.MedicationDispensed.DrugDescription [default value = Use Patient Account Number(s) from this response and execute the /iews/prescriptions web service to obtain a PAR. ]	
			Drug Quantity	SCRIPT.Message.Body.RxHistoryResponse.MedicationDispensed.Quantity.Value [default value = 0]	
			Code List Qualifier	SCRIPT.Message.Body.RxHistoryResponse.MedicationDispensed.Quantity.CodeListQualifier [default value = 87]	
			Unit Source Code	SCRIPT.Message.Body.RxHistoryResponse.MedicationDispensed.Quantity.QuantityUnitofMeasure.Code [default value = AC]	
			Date Filled	SCRIPT.Message.Body.RxHistoryResponse.MedicationDispensed.LastFillDate.Date [default value = 1900-01-01]	
			Substitutions	SCRIPT.Message.Body.RxHistoryResponse.MedicationDispensed.Substitutions [default value = 0]	
			Species Code; Number of RX for Patient, Animal Name (values separated by ;)	SCRIPT.Message.Body.RxHistoryResponse.MedicationDispensed.Note	
			Patient Account Number (use to obtain a PAR via the /iews/prescriptions web service)	SCRIPT.Message.Body.RxHistoryResponse.MedicationDispensed.Patient.Identification.PatientAccountNumber	

Section		CURES	NCPDP	Attribute
		Patient Last Name	SCRIPT.Message.Body.RxHistoryResponse.MedicationDispensed.Patient.Name.LastName	
		Patient First Name	SCRIPT.Message.Body.RxHistoryResponse.MedicationDispensed.Patient.Name.FirstName	
		Patient Gender	SCRIPT.Message.Body.RxHistoryResponse.MedicationDispensed.Patient.Gender	
		Patient DOB	SCRIPT.Message.Body.RxHistoryResponse.MedicationDispensed.Patient.DateOfBirth.Date	
		Patient Address	SCRIPT.Message.Body.RxHistoryResponse.MedicationDispensed.Patient.Address.AddressLine1	
		Patient City	SCRIPT.Message.Body.RxHistoryResponse.MedicationDispensed.Patient.Address.City	
		Patient State	SCRIPT.Message.Body.RxHistoryResponse.MedicationDispensed.Patient.Address.StateProvince	
		Patient Postal Code	SCRIPT.Message.Body.RxHistoryResponse.MedicationDispensed.Patient.Address.PostalCode	
		Date Sold	SCRIPT.Message.Body.RxHistoryResponse.MedicationDispensed.OtherMedicationDate.OtherMedicationDate.Date [default value = 1900-01-01]	
		Date Sold Qualifier	SCRIPT.Message.Body.RxHistoryResponse.MedicationDispensed.OtherMedicationDate.OtherMedicationDateQualifier [default value = SoldDate]	
	Search	Search Period - Range Start	SCRIPT.Message.Body.RxHistoryResponse.RequestedDates.StartDate.Date	
		Search Period - Range End	SCRIPT.Message.Body.RxHistoryResponse.RequestedDates.EndDate.Date	



### 5.1.3 /iews/patients (Interstate Data Response for Single Patient Matched) –Response Mapping of Interstate Data to NCPDP Format

\*\*Interstate Data is received by CURES via the NIEM XML-based information exchange framework. The NIEM elements are mapped to CURES elements. The table below maps the CURES elements to NCPDP elements and NIEM elements.

Section		CURES	NCPDP	NIEM	Attribute	
XML Declaration		N/A	N/A	N/A	xml version="1.0" encoding="UTF-8" standalone="yes"	
Message	Message	Message	SCRIPT.Message	N/A	DatatypesVersion="20170715" TransportVersion="20170715" TransactionDomain="SCRIPT" TransactionVersion="20170715" StructuresVersion="20170715" ECLVersion="20170715"	
	Header	Message Envelope	Recipient of the Message	SCRIPT.Message.Header.To	N/A	Qualifier="ZZZ"
			Sender of the Message	SCRIPT.Message.Header.From	N/A	Qualifier="ZZZ"
			Unique MessageID	SCRIPT.Message.Header.MessageID	N/A	
			Relates to MessageID	SCRIPT.Message.Header.RelatesToMessageID [value = MessageID for RxHistoryRequest]	N/A	
			Sent Date/Time	SCRIPT.Message.Header.SentTime	N/A	
			Sender Software Developer	SCRIPT.Message.Header.SenderSoftware.SenderSoftwareDeveloper	N/A	
			Sender Software Product	SCRIPT.Message.Header.SenderSoftware.SenderSoftwareProduct	N/A	
			Sender Software Version Release	SCRIPT.Message.Header.SenderSoftware.SenderSoftwareVersionRelease	N/A	
	Body	Response	Response	SCRIPT.Message.Body.RxHistoryResponse.Response.Approved	N/A	
			Benefits Coordination	Consent	SCRIPT.Message.Body.RxHistoryRequest.BenefitsCoordination.Consent [default value = Y]	N/A
		Interstate Patient	Patient Last Name	SCRIPT.Message.Body.RxHistoryResponse.Patient.HumanPatient.Name.LastName	pmp:Prescription.pmp:Patient.nc:PersonName.nc:PersonSurName	
			Patient First Name	SCRIPT.Message.Body.RxHistoryResponse.Patient.HumanPatient.Name.FirstName	pmp:Prescription.pmp:Patient.nc:PersonName.nc:PersonGivenName	
			Patient Gender	SCRIPT.Message.Body.RxHistoryResponse.Patient.HumanPatient.Gender	pmp:Prescription.pmp:Patient.nc:PersonSexCode	
			Patient DOB	SCRIPT.Message.Body.RxHistoryResponse.Patient.HumanPatient.DateOfBirth.Date	pmp:Prescription.pmp:Patient.nc:PersonBirthDate.nc:Date	
			Patient Address	SCRIPT.Message.Body.RxHistoryResponse.Patient.HumanPatient.Address.AddressLine1	pmp:Prescription.pmp:Patient.pmp:PersonPrimaryContactInformation.nc:ContactMailingAddress.nc:StructuredAddress.nc:LocationStreet.nc:StreetFullText	
			Patient City	SCRIPT.Message.Body.RxHistoryResponse.Patient.HumanPatient.Address.City	pmp:Prescription.pmp:Patient.pmp:PersonPrimaryContactInformation.nc:ContactMailingAddress.nc:StructuredAddress.nc:LocationCityName	
Patient State/Province			SCRIPT.Message.Body.RxHistoryResponse.Patient.HumanPatient.Address.StateProvince	pmp:Prescription.pmp:Patient.pmp:PersonPrimaryContactInformation.nc:ContactMailingAddress.nc:StructuredAddress.nc:LocationStateUSPostalServiceCode		
Patient Postal Code	SCRIPT.Message.Body.RxHistoryResponse.Patient.HumanPatient.Address.PostalCode	pmp:Prescription.pmp:Patient.pmp:PersonPrimaryContactInformation.nc:ContactMailingAddress.nc:StructuredAddress.nc:LocationPostalCode				

Section		CURES	NCPDP	NIEM	Attribute
Interstate Patient- Prescription Data Response (1...300)		Drug Name, Strength, Form (values separated by   )	SCRIPT.Message.Body.RxHistoryResponse.MedicationDispensed.DrugDescription	Drug Name: pmp:Prescription.pmp:PrescriptionDrug.pmp:DrugProductNameText  Strength: pmp:Prescription.pmp:PrescriptionDrug.pmp:DrugStrengthText  Form: pmp:Prescription.pmp:PrescriptionDrug.pmp:DrugUnitOfMeasureText	
		NDC Number (product code)	SCRIPT.Message.Body.RxHistoryResponse.MedicationDispensed.DrugCoded.ProductCode.Code	pmp:Prescription.pmp:PrescriptionDrug.pmp:DrugNDCProductIdentifier.nc:IdentificationID	
		Product Code Qualifier	SCRIPT.Message.Body.RxHistoryResponse.MedicationDispensed.DrugCoded.ProductCode.Qualifier [default value = ND]	N/A	
		Drug Quantity	SCRIPT.Message.Body.RxHistoryResponse.MedicationDispensed.Quantity.Value	pmp:Prescription.pmp:PrescriptionDrug.pmp:DispensedQuantity	
		Code List Qualifier	SCRIPT.Message.Body.RxHistoryResponse.MedicationDispensed.Quantity.CodeListQualifier [default value = 87]	N/A	
		Unit Source Code	SCRIPT.Message.Body.RxHistoryResponse.MedicationDispensed.Quantity.QuantityUnitofMeasure.Code [default value = AC]	N/A	
		Days Supply	SCRIPT.Message.Body.RxHistoryResponse.MedicationDispensed.DaysSupply	pmp:Prescription.pmp:PrescriptionDrug.pmp:DaysSupplyCount	
		Date Filled	SCRIPT.Message.Body.RxHistoryResponse.MedicationDispensed.LastFillDate.Date	pmp:Prescription.pmp:PrescriptionFilledDate.nc:Date	
		Substitutions	SCRIPT.Message.Body.RxHistoryResponse.MedicationDispensed.Substitutions [default value = 0]	N/A	
		Species Code; Refills Authorized (values separated by .)	SCRIPT.Message.Body.RxHistoryResponse.MedicationDispensed.Note	Species Code: pmp:Prescription.pmp:Patient.pmp:SpeciesCode  Refills Authorized: pmp:Prescription.pmp:RefillsAuthorizedCount	
		Pharmacy NCPDPID	SCRIPT.Message.Body.RxHistoryResponse.MedicationDispensed.Pharmacy.Identification.NCPDPID [default value = -]	N/A	
		Pharmacy Number	SCRIPT.Message.Body.RxHistoryResponse.MedicationDispensed.Pharmacy.Identification.StateLicenseNumber	pmp:Prescription.Dispenser.pmp:StateLicenseIdentifier.nc:IdentificationID	
		Pharmacy NPI	SCRIPT.Message.Body.RxHistoryResponse.MedicationDispensed.Pharmacy.Identification.NPI [default value = -]	N/A	
		Pharmacy Name	SCRIPT.Message.Body.RxHistoryResponse.MedicationDispensed.Pharmacy.BusinessName	pmp:Prescription.pmp:Dispenser.nc:OrganizationName	
		Pharmacy Address (line 1)	SCRIPT.Message.Body.RxHistoryResponse.MedicationDispensed.Pharmacy.Address.AddressLine1	pmp:Prescription.pmp:Dispenser.nc:OrganizationLocation.nc:LocationAddress.nc:StructuredAddress.nc:LocationStreet.nc:StreetFullText	
		Pharmacy City	SCRIPT.Message.Body.RxHistoryResponse.MedicationDispensed.Pharmacy.Address.Address.City	pmp:Prescription.pmp:Dispenser.nc:OrganizationLocation.nc:LocationAddress.nc:StructuredAddress.nc:LocationCityName	
		Pharmacy State	SCRIPT.Message.Body.RxHistoryResponse.MedicationDispensed.Pharmacy.Address.StateProvince	pmp:Prescription.pmp:Dispenser.nc:OrganizationLocation.nc:LocationAddress.nc:StructuredAddress.nc:LocationStateUSPostalServiceCode	
		Pharmacy Postal Code	SCRIPT.Message.Body.RxHistoryResponse.MedicationDispensed.Pharmacy.Address.PostalCode	pmp:Prescription.pmp:Dispenser.nc:OrganizationLocation.nc:LocationAddress.nc:StructuredAddress.nc:LocationPostalCode	
		Prescriber DEA	SCRIPT.Message.Body.RxHistoryResponse.MedicationDispensed.Prescriber.NonVeterinarian.Identification.DEANumber	pmp:Prescription.pmp:prescriber.pmp:DEANumberIdentifier.nc:IdentificationID	
		Prescriber NPI	SCRIPT.Message.Body.RxHistoryResponse.MedicationDispensed.Prescriber.NonVeterinarian.Identification.NPI [default value = -]	N/A	
	Prescriber Last Name, Prescriber First Name  (Last name and first name separated by .)  (Prescriber name is captured in the First and Last Name fields)	SCRIPT.Message.Body.RxHistoryResponse.MedicationDispensed.Prescriber.NonVeterinarian.Name.LastName	Prescriber Last Name: pmp:Prescription.pmp:prescriber.nc:PersonName.nc:PersonSurname  Prescriber First Name: pmp:Prescription.pmp:prescriber.nc:PersonName.nc:PersonGivenName		

Section		CURES	NCPDP	NIEM	Attribute
		Prescriber Last Name, Prescriber First Name  (Last name and first name separated by .)  (Prescriber name is captured in the First and Last Name fields)	SCRIPT.Message.Body.RxHistoryResponse.MedicationDispensed.Prescriber.NonVeterinarian.Name.FirstName	Prescriber Last Name: pmp:Prescription.pmp:prescriber.nc:PersonName.nc:PersonSurnameName  Prescriber First Name: pmp:Prescription.pmp:prescriber.nc:PersonName.nc:PersonGivenName	
		Prescriber City	SCRIPT.Message.Body.RxHistoryResponse.MedicationDispensed.Prescriber.NonVeterinarian.Address.City	pmp:Prescription.pmp:PersonPrimaryContactInformation.nc:StructuredAddress.nc:LocationCityName	
		Pharmacy Prescription Number Qualifier	SCRIPT.Message.Body.RxHistoryResponse.MedicationDispensed.HistorySource.Source.SourceQualifier [default value = P2]	N/A	
		Pharmacy Prescription Number	SCRIPT.Message.Body.RxHistoryResponse.MedicationDispensed.HistorySource.SourceReference	pmp:Prescription.pmp.PrescriptionNumberText	
		Prescription Refill Number	SCRIPT.Message.Body.RxHistoryResponse.MedicationDispensed.HistorySource.FillNumber	pmp:Prescription.pmp:DrugRefillNumbercount	
		Payment Type	SCRIPT.Message.Body.RxHistoryResponse.MedicationDispensed.HistorySource.PaymentType	pmp:Prescription.pmp.MethodOfPaymentCode	
		Date Sold (NIEM does not support date sold default value is 1900-01-01)	SCRIPT.Message.Body.RxHistoryResponse.MedicationDispensed.OtherMedicationDate.OtherMedicationDate.Date	N/A	
		Date Sold Qualifier	SCRIPT.Message.Body.RxHistoryResponse.MedicationDispensed.OtherMedicationDate.OtherMedicationDateQualifier [default value = SoldDate]	N/A	
	Search	Search Period - Range Start	SCRIPT.Message.Body.RxHistoryResponse.RequestedDates.StartDate.Date	N/A	
		Search Period - Range End	SCRIPT.Message.Body.RxHistoryResponse.RequestedDates.EndDate.Date	N/A	
	Interstate Data Response	State PDMP	SCRIPT.Message.Body.RxHistoryResponse.PDMPStatesResponded.PDMPStates.StateProvince	N/A	
		State PDMP Response	SCRIPT.Message.Body.RxHistoryResponse.PDMPStatesResponded.PDMPStates.ReasonCode	N/A	

### 5.1.4 /iews/patients (Interstate Data Response for Multiple Patients Matched) - Response Mapping of CURES Data to NCPDP Format

\*\*Interstate Data is received by CURES via the NIEM XML-based information exchange framework. The NIEM elements are mapped to CURES elements. The table below maps the CURES elements to NCPDP elements and NIEM elements.

Section		CURES	NCPDP	NIEM	Attribute	
XML Declaration		N/A	N/A	N/A	xml version="1.0" encoding="UTF-8" standalone="yes"	
Message	Message	Message	SCRIPT.Message	N/A	DatatypesVersion="20170715" TransportVersion="20170715" TransactionDomain="SCRIPT" TransactionVersion="20170715" StructuresVersion="20170715" ECLVersion="20170715"	
	Header	Message Envelope	Recipient of the Message	SCRIPT.Message.Header.To	N/A	Qualifier="ZZZ"
			Sender of the Message	SCRIPT.Message.Header.From	N/A	Qualifier="ZZZ"
			Unique MessageID	SCRIPT.Message.Header.MessageID	N/A	
			Relates to MessageID	SCRIPT.Message.Header.RelatesToMessageID [value = MessageID for RxHistoryRequest]	N/A	
			Sent Date/Time	SCRIPT.Message.Header.SentTime	N/A	
			Sender Software Developer	SCRIPT.Message.Header.SenderSoftware.SenderSoftwareDeveloper	N/A	
			Sender Software Product	SCRIPT.Message.Header.SenderSoftware.SenderSoftwareProduct	N/A	
			Sender Software Version Release	SCRIPT.Message.Header.SenderSoftware.SenderSoftwareVersionRelease	N/A	
	Body	Response	Response	SCRIPT.Message.Body.RxHistoryResponse.Response.Denied	N/A	
		Benefits Coordination	Consent	SCRIPT.Message.Body.RxHistoryRequest.BenefitsCoordination.Consent [default value = Y]	N/A	
		PAR Search Criteria	Patient Last Name	SCRIPT.Message.Body.RxHistoryResponse.Patient.HumanPatient.Name.LastName	N/A	
			Patient First Name	SCRIPT.Message.Body.RxHistoryResponse.Patient.Patient.HumanPatient.Name.FirstName	N/A	
			Patient Gender	SCRIPT.Message.Body.RxHistoryResponse.Patient.Patient.HumanPatient.Gender	N/A	
			Patient DOB	SCRIPT.Message.Body.RxHistoryResponse.Patient.Patient.HumanPatient.DateOfBirth.Date	N/A	
			Patient Address	SCRIPT.Message.Body.RxHistoryResponse.Patient.Patient.HumanPatient.Address.AddressLine1	N/A	
			Patient City	SCRIPT.Message.Body.RxHistoryResponse.Patient.Patient.HumanPatient.Address.City	N/A	
			Patient State/Province	SCRIPT.Message.Body.RxHistoryResponse.Patient.Patient.HumanPatient.Address.StateProvince	N/A	
			Postal Code	SCRIPT.Message.Body.RxHistoryResponse.Patient.Patient.HumanPatient.Address.PostalCode	N/A	
		Patient Picklist (1..300)	Drug Name	SCRIPT.Message.Body.RxHistoryResponse.MedicationDispensed.DrugDescription [default value = Use Patient Account Number(s) from this response and execute the /iews/prescriptions web service to obtain a PAR. ]	N/A	
Drug Quantity			SCRIPT.Message.Body.RxHistoryResponse.MedicationDispensed.Quantity.Value [default value = 0]	N/A		

Section		CURES	NCPDP	NIEM	Attribute
		Code List Qualifier	SCRIPT.Message.Body.RxHistoryResponse.MedicationDispensed.Quantity.CodeListQualifier [default value = 87]	N/A	
		Unit Source Code	SCRIPT.Message.Body.RxHistoryResponse.MedicationDispensed.Quantity.QuantityUnitofMeasure.Code [default value = AC]	N/A	
		Date Filled	SCRIPT.Message.Body.RxHistoryResponse.MedicationDispensed.LastFillDate.Date [default value = 1900-01-01]	N/A	
		Substitutions	SCRIPT.Message.Body.RxHistoryResponse.MedicationDispensed.Substitutions [default value = 0]	N/A	
		Species Code; Number of RX for Patient, Animal Name (values separated by ;)	SCRIPT.Message.Body.RxHistoryResponse.MedicationDispensed.Note	Species Code: pmp:Prescription.pmp:Patient.pmp:SpeciesCode  Number of RX for Patient: N/A to NIEM  Animal Name: pmp:Prescription.pmp:Patient.pmp:PatientNameOfAnimalText	
		Patient Account Number (use to obtain a PAR via the <a href="#">/news/prescriptions</a> web service)	SCRIPT.Message.Body.RxHistoryResponse.MedicationDispensed.Patient.Identification.PatientAccountNumber	N/A	
		Patient Last Name	SCRIPT.Message.Body.RxHistoryResponse.MedicationDispensed.Patient.Name.LastName	pmp:Prescription.pmp:Patient.nc:PersonName.nc:PersonSurName	
		Patient First Name	SCRIPT.Message.Body.RxHistoryResponse.MedicationDispensed.Patient.Name.FirstName	pmp:Prescription.pmp:Patient.nc:PersonName.nc:PersonGivenName	
		Patient Gender	SCRIPT.Message.Body.RxHistoryResponse.MedicationDispensed.Patient.Gender	pmp:Prescription.pmp:Patient.nc:PersonSexCode	
		Patient DOB	SCRIPT.Message.Body.RxHistoryResponse.MedicationDispensed.Patient.DateOfBirth.Date	pmp:Prescription.pmp:Patient.nc:PersonBirthDate.nc:Date	
		Patient Address	SCRIPT.Message.Body.RxHistoryResponse.MedicationDispensed.Patient.Address.AddressLine1	pmp:Prescription.pmp:Patient.pmp:PersonPrimaryContactInformation.nc:ContactMailingAddress.nc:StructuredAddress.nc:LocationStreet.nc:StreetFullText	
		Patient City	SCRIPT.Message.Body.RxHistoryResponse.MedicationDispensed.Patient.Address.City	pmp:Prescription.pmp:Patient.pmp:PersonPrimaryContactInformation.nc:ContactMailingAddress.nc:StructuredAddress.nc:LocationCityName	
		Patient State	SCRIPT.Message.Body.RxHistoryResponse.MedicationDispensed.Patient.Address.StateProvince	pmp:Prescription.pmp:Patient.pmp:PersonPrimaryContactInformation.nc:ContactMailingAddress.nc:StructuredAddress.nc:LocationStateUSPostalServiceCode	
		Patient Postal Code	SCRIPT.Message.Body.RxHistoryResponse.MedicationDispensed.Patient.Address.PostalCode	pmp:Prescription.pmp:Patient.pmp:PersonPrimaryContactInformation.nc:ContactMailingAddress.nc:StructuredAddress.nc:LocationPostalCode	
		Date Sold	SCRIPT.Message.Body.RxHistoryResponse.MedicationDispensed.OtherMedicationDate.OtherMedicationDate.Date [default value = 1900-01-01]	N/A	
	Date Sold Qualifier	SCRIPT.Message.Body.RxHistoryResponse.MedicationDispensed.OtherMedicationDate.OtherMedicationDateQualifier [default value = SoldDate]	N/A		
	Search	Search Period - Range Start	SCRIPT.Message.Body.RxHistoryResponse.RequestedDates.StartDate.Date	N/A	
		Search Period - Range End	SCRIPT.Message.Body.RxHistoryResponse.RequestedDates.EndDate.Date	N/A	
	Interstate Data Response	State PDMP	SCRIPT.Message.Body.RxHistoryResponse.PDMPStatesResponded.StateProvince	N/A	
		State PDMP Response	SCRIPT.Message.Body.RxHistoryResponse.PDMPStatesResponded.ReasonCode	N/A	

**5.2 /IEWS/PRESCRIPTIONS (CURES AND INTERSTATE DATA REQUEST FOR PICKLIST PATIENTS) - REQUEST MAPPING OF CURES AND INTERSTATE DATA TO NCPDP FORMAT**

Section		CURES	NCPDP	Attribute	Required/Optional	
Message	Message	Message	SCRIPT.Message	DatatypesVersion="20170715" TransportVersion="20170715" TransactionVersion="20170715" StructuresVersion="20170715" ECLVersion="20170715" TransactionDomain="SCRIPT"	Required	
	Header	Message Envelope	Recipient of the Message	SCRIPT.Message.Header.To	Qualifier="ZZZ"	Required
			HIT System Identifier	SCRIPT.Message.Header.From	Qualifier="ZZZ"	Required
			Unique MessageID	SCRIPT.Message.Header.MessageID		Required
			Sent Date/Time	SCRIPT.Message.Header.SentTime		Required
			User ID of the Requesting Entity	SCRIPT.Message.Header.Security.UsernameToken.Username		Required
			HIT System Hospital/Facility	SCRIPT.Message.Header.Security.Sender.SecondaryIdentification		Required
			Description of Facility (Emergency, ICU)	SCRIPT.Message.Header.Security.Sender.TertiaryIdentification		Optional
			Sender Software Developer	SCRIPT.Message.Header.SenderSoftware.SenderSoftwareDeveloper		Required
			Sender Software Product	SCRIPT.Message.Header.SenderSoftware.SenderSoftwareProduct		Required
			Sender Software Version Release	SCRIPT.Message.Header.SenderSoftware.SenderSoftwareVersionRelease		Required
	Body	Patient (populate request with patient information from /iews/patients/picklist response)	Benefits Coordination	Consent	SCRIPT.Message.Body.RxHistoryRequest.BenefitsCoordination.Consent [value = Y]	Required
			Patient Account Number	SCRIPT.Message.Body.RxHistoryRequest.Patient.HumanPatient.Identification.PatientAccountNumber.		Required
			Patient Last Name	SCRIPT.Message.Body.RxHistoryRequest.Patient.HumanPatient.Name.LastName		Required
			Patient First Name	SCRIPT.Message.Body.RxHistoryRequest.Patient.HumanPatient.Name.FirstName		Required
			Patient Gender – A value must be specified: U = Unspecified F = Female M = Male	SCRIPT.Message.Body.RxHistoryRequest.Patient.HumanPatient.Gender [value = U, F, or M]		Required
			Patient DOB – YYYY-MM-DD	SCRIPT.Message.Body.RxHistoryRequest.Patient.HumanPatient.DateOfBirth.Date		Required
			Patient Address	SCRIPT.Message.Body.RxHistoryRequest.Patient.HumanPatient.Address.AddressLine1		Optional
			Patient City	SCRIPT.Message.Body.RxHistoryRequest.Patient.HumanPatient.Address.City		Optional
			Patient State/Province – 2 character state/province abbreviation	SCRIPT.Message.Body.RxHistoryRequest.Patient.HumanPatient.Address.StateProvince		Optional
Patient Postal Code – 5 digit postal code			SCRIPT.Message.Body.RxHistoryRequest.Patient.HumanPatient.Address.PostalCode		Optional	
Requesting User	<b>Prescriber or Non-DEA Practitioner</b>					
	Prescriber/Non-DEA Practitioner State License Number	SCRIPT.Message.Body.RxHistoryRequest.Prescriber.NonVeterinarian.Identification.StateLicenseNumber			Required if Prescriber or Non-DEA Practitioner	

Section		CURES	NCPDP	Attribute	Required/Optional	
		Prescriber DEA Number	SCRIPT.Message.Body.RxHistoryRequest.Prescriber.NonVeterinarian.Identification.DEANumber		Optional	
		Prescriber/Non-DEA Practitioner NPI	SCRIPT.Message.Body.RxHistoryRequest.Prescriber.NonVeterinarian.Identification.NPI		Required if Prescriber or Non-DEA Practitioner	
		Prescriber/Non-DEA Practitioner Last Name	SCRIPT.Message.Body.RxHistoryRequest.Prescriber.NonVeterinarian.Name.LastName		Required if Prescriber or Non-DEA Practitioner	
		Prescriber/Non-DEA Practitioner First Name	SCRIPT.Message.Body.RxHistoryRequest.Prescriber.NonVeterinarian.Name.FirstName		Required if Prescriber or Non-DEA Practitioner	
		<b>Pharmacist</b>				
		Pharmacist State License Number	SCRIPT.Message.Body.RxHistoryRequest.Pharmacy.Pharmacist.Identification.StateLicenseNumber		Required if Pharmacist	
		Pharmacist Last Name	SCRIPT.Message.Body.RxHistoryRequest.Pharmacy.Pharmacist.Name.LastName		Required if Pharmacist	
		Pharmacist First Name	SCRIPT.Message.Body.RxHistoryRequest.Pharmacy.Pharmacist.Name.FirstName		Required if Pharmacist	
		Business Name	SCRIPT.Message.Body.RxHistoryRequest.Pharmacy.BusinessName		Required if Pharmacist	
		Search	Search Period - Range Start	SCRIPT.Message.Body.RxHistoryRequest.RequestedDates.StartDate.Date		Required
Search Period - Range End	SCRIPT.Message.Body.RxHistoryRequest.RequestedDates.EndDate.Date			Required		

**5.2.1 /iews/prescriptions (CURES Data Response for Patient from Picklist) – Response Mapping of CURES Data to NCPDP Format**

Section		CURES	NCPDP	Attribute	
XML Declaration		N/A	N/A	xml version="1.0" encoding="UTF-8" standalone="yes"	
Message	Message	Message	SCRIPT.Message	DatatypesVersion="20170715" TransportVersion="20170715" TransactionDomain="SCRIPT" TransactionVersion="20170715" StructuresVersion="20170715" ECLVersion="20170715"	
	Header	Message Envelope	Recipient of the Message	SCRIPT.Message.Header.To	Qualifier="ZZZ"
			Sender of the Message	SCRIPT.Message.Header.From	Qualifier="ZZZ"
			Unique MessageID	SCRIPT.Message.Header.MessageID	
			Relates to MessageID	SCRIPT.Message.Header.RelatesToMessageID [value = MessageID for RxHistoryRequest]	
			Sent Date/Time	SCRIPT.Message.Header.SentTime	
			Sender Software Developer	SCRIPT.Message.Header.SenderSoftware.SenderSoftwareDeveloper	
			Sender Software Product	SCRIPT.Message.Header.SenderSoftware.SenderSoftwareProduct	
	Sender Software Version Release	SCRIPT.Message.Header.SenderSoftware.SenderSoftwareVersionRelease			
Body	Response	Response	SCRIPT.Message.Body.RxHistoryResponse.Response.Approved		

Section		CURES	NCPDP	Attribute
	Benefits Coordination	Consent	SCRIPT.Message.Body.RxHistoryRequest.BenefitsCoordination.Consent [value = Y]	
		Patient (information as provided in the /news/prescriptions request)	Patient Account Number	SCRIPT.Message.Body.RxHistoryResponse.Patient.HumanPatient.Identification.PatientAccountNumber
	Patient Last Name		SCRIPT.Message.Body.RxHistoryResponse.Patient.HumanPatient.Name.LastName	
	Patient First Name		SCRIPT.Message.Body.RxHistoryResponse.Patient.HumanPatient.Name.FirstName	
	Patient Gender		SCRIPT.Message.Body.RxHistoryResponse.Patient.HumanPatient.Gender	
	Patient DOB		SCRIPT.Message.Body.RxHistoryResponse.Patient.HumanPatient.DateOfBirth.Date	
	Patient Address		SCRIPT.Message.Body.RxHistoryResponse.Patient.HumanPatient.Address.AddressLine1	
	Patient City		SCRIPT.Message.Body.RxHistoryResponse.Patient.HumanPatient.Address.City	
	Patient State/Province		SCRIPT.Message.Body.RxHistoryResponse.Patient.HumanPatientAddress.StateProvince	
	Patient Postal Code		SCRIPT.Message.Body.RxHistoryResponse.Patient.HumanPatient.Address.PostalCode	
	Prescription <b>1..3001</b>	Drug Name, Strength, Form (values separated by   ) Note: if the reported NDC failed validation, the reported NDC is displayed with an asterisk	SCRIPT.Message.Body.RxHistoryResponse.MedicationDispensed.DrugDescription	
		NDC Number (product code)	SCRIPT.Message.Body.RxHistoryResponse.MedicationDispensed.DrugCoded.ProductCode.Code	
		Product Code Qualifier	SCRIPT.Message.Body.RxHistoryResponse.MedicationDispensed.DrugCoded.ProductCode.Qualifier [default value = ND]	
		Drug Quantity	SCRIPT.Message.Body.RxHistoryResponse.MedicationDispensed.Quantity.Value	
		Code List Qualifier	SCRIPT.Message.Body.RxHistoryResponse.MedicationDispensed.Quantity.CodeListQualifier [default value = 87]	
		Unit Source Code	SCRIPT.Message.Body.RxHistoryResponse.MedicationDispensed.Quantity.QuantityUnitofMeasure.Code [default value = AC]	
		Days Supply	SCRIPT.Message.Body.RxHistoryResponse.MedicationDispensed.DaysSupply	
		Date Filled	SCRIPT.Message.Body.RxHistoryResponse.MedicationDispensed.LastFillDate.Date	
		Substitutions	SCRIPT.Message.Body.RxHistoryResponse.MedicationDispensed.Substitutions [default value = 0]	
		Species Code; Refills Authorized (values separated by ;)	SCRIPT.Message.Body.RxHistoryResponse.MedicationDispensed.Note	
		Pharmacy NCPDPID	SCRIPT.Message.Body.RxHistoryResponse.MedicationDispensed.Pharmacy.Identification.NCPDPID [default value = -]	
		Pharmacy Number	SCRIPT.Message.Body.RxHistoryResponse.MedicationDispensed.Pharmacy.Identification.StateLicenseNumber	
		Pharmacy NPI	SCRIPT.Message.Body.RxHistoryResponse.MedicationDispensed.Pharmacy.Identification.NPI [default value = -]	
		Pharmacy Name	SCRIPT.Message.Body.RxHistoryResponse.MedicationDispensed.Pharmacy.BusinessName	
		Pharmacy Address	SCRIPT.Message.Body.RxHistoryResponse.MedicationDispensed.Pharmacy.Address.AddressLine1	
		Pharmacy City	SCRIPT.Message.Body.RxHistoryResponse.MedicationDispensed.Pharmacy.Address.Address.City	
		Pharmacy State	SCRIPT.Message.Body.RxHistoryResponse.MedicationDispensed.Pharmacy.Address.StateProvince	
	Pharmacy Postal Code	SCRIPT.Message.Body.RxHistoryResponse.MedicationDispensed.Pharmacy.Address.PostalCode		



Section			CURES	NCPDP	Attribute
			Prescriber DEA	SCRIPT.Message.Body.RxHistoryResponse.MedicationDispensed.Prescriber.NonVeterinarian.Identification.DEANumber	
			Prescriber NPI	SCRIPT.Message.Body.RxHistoryResponse.MedicationDispensed.Prescriber.NonVeterinarian.Identification.NPI [default value = -]	
			Prescriber Name (prescriber name is captured in the First and Last Name fields)	SCRIPT.Message.Body.RxHistoryResponse.MedicationDispensed.Prescriber.NonVeterinarian.Name.LastName	
			Prescriber's Name (prescriber name is captured in the First and Last Name fields)	SCRIPT.Message.Body.RxHistoryResponse.MedicationDispensed.Prescriber.NonVeterinarian.Name.FirstName	
			Prescriber City	SCRIPT.Message.Body.RxHistoryResponse.MedicationDispensed.Prescriber.NonVeterinarian.Address.City	
			Prescription Number Qualifier	SCRIPT.Message.Body.RxHistoryResponse.MedicationDispensed.HistorySource.Source.SourceQualifier [default value = P2]	
			Pharmacy Prescription Number	SCRIPT.Message.Body.RxHistoryResponse.MedicationDispensed.HistorySource.SourceReference	
			Prescription Refill Number	SCRIPT.Message.Body.RxHistoryResponse.MedicationDispensed.HistorySource.FillNumber	
			Payment Type	SCRIPT.Message.Body.RxHistoryResponse.MedicationDispensed.HistorySource.PaymentType	
			Date Sold (if Date Sold was not reported, date value is 1900-01-01)	SCRIPT.Message.Body.RxHistoryResponse.MedicationDispensed.OtherMedicationDate.OtherMedicationDate.Date	
			Date Sold Qualifier	SCRIPT.Message.Body.RxHistoryResponse.MedicationDispensed.OtherMedicationDate.OtherMedicationDateQualifier [default value = SoldDate]	
			Search		Search Time Range Start
Search Time - Range End	SCRIPT.Message.Body.RxHistoryResponse.RequestedDates.EndDate.Date				

**5.2.2 /iews/prescriptions (Interstate Data Response for Patient from Picklist) – Response Mapping of CURES Data to NCPDP Format**

\*\*Interstate Data is received by CURES via the NIEM XML-based information exchange framework. The NIEM elements are mapped to CURES elements. The table below maps the CURES elements to NCPDP elements and NIEM elements.

Section			CURES	NCPDP	NIEM	Attribute
XML Declaration			N/A	N/A	N/A	xml version="1.0" encoding="UTF-8" standalone="yes"
Message	Message		Message	SCRIPT.Message	N/A	DatatypesVersion="20170715" TransportVersion="20170715" TransactionDomain="SCRIPT" TransactionVersion="20170715" StructuresVersion="20170715" ECLVersion="20170715"
	Header	Message Envelope	Recipient of the Message	SCRIPT.Message.Header.To	N/A	Qualifier="ZZZ"
			Sender of the Message	SCRIPT.Message.Header.From	N/A	Qualifier="ZZZ"
			Unique MessageID	SCRIPT.Message.Header.MessageID	N/A	
			Relates to MessageID	SCRIPT.Message.Header.RelatesToMessageID [value = MessageID for RxHistoryRequest]	N/A	

Section		CURES	NCPDP	NIEM	Attribute	
			Sent Date/Time	SCRIPT.Message.Header.SentTime	N/A	
			Sender Software Developer	SCRIPT.Message.Header.SenderSoftware.SenderSoftwareDeveloper	N/A	
			Sender Software Product	SCRIPT.Message.Header.SenderSoftware.SenderSoftwareProduct	N/A	
			Sender Software Version Release	SCRIPT.Message.Header.SenderSoftware.SenderSoftwareVersionRelease	N/A	
	Body	Response	Response	SCRIPT.Message.Body.RxHistoryResponse.Response.Approved	N/A	
		Benefits Coordination	Consent	SCRIPT.Message.Body.RxHistoryRequest.BenefitsCoordination.Consent [value = Y]	N/A	
		Patient (information as provided in the /views/prescriptions request)	Patient Account Number	SCRIPT.Message.Body.RxHistoryResponse.Patient.HumanPatient.Identification.PatientAccountNumber	N/A	
			Patient Last Name	SCRIPT.Message.Body.RxHistoryResponse.Patient.HumanPatient.Name.LastName	N/A	
			Patient First Name	SCRIPT.Message.Body.RxHistoryResponse.Patient.HumanPatient.Name.FirstName	N/A	
			Patient Gender	SCRIPT.Message.Body.RxHistoryResponse.Patient.HumanPatient.Gender	N/A	
			Patient DOB	SCRIPT.Message.Body.RxHistoryResponse.Patient.HumanPatient.DateOfBirth.Date	N/A	
			Patient Address	SCRIPT.Message.Body.RxHistoryResponse.Patient.HumanPatient.Address.AddressLine1	N/A	
			Patient City	SCRIPT.Message.Body.RxHistoryResponse.Patient.HumanPatient.Address.City	N/A	
			Patient State/Province	SCRIPT.Message.Body.RxHistoryResponse.Patient.HumanPatientAddress.StateProvince	N/A	
			Patient Postal Code	SCRIPT.Message.Body.RxHistoryResponse.Patient.HumanPatient.Address.PostalCode	N/A	
		Prescription (1...300)	Drug Name, Strength, Form (values separated by   )	SCRIPT.Message.Body.RxHistoryResponse.MedicationDispensed.DrugDescription	Drug Name : pmp:Prescription.pmp:PrescriptionDrug.pmp:DrugProductNameText  Strength: pmp:Prescription.pmp:PrescriptionDrug.pmp:DrugStrengthText  Form: pmp:Prescription.pmp:PrescriptionDrug.pmp:DrugUnitOfMeasureText	
			NDC Number (product code)	SCRIPT.Message.Body.RxHistoryResponse.MedicationDispensed.DrugCoded.ProductCode.Code	pmp:Prescription.pmp:PrescriptionDrug.pmp:DrugNDCProductIdentifier.nc:identificationID	
			Product Code Qualifier	SCRIPT.Message.Body.RxHistoryResponse.MedicationDispensed.DrugCoded.ProductCode.Qualifier [default value = ND]	N/A	
			Drug Quantity	SCRIPT.Message.Body.RxHistoryResponse.MedicationDispensed.Quantity.Value	pmp:Prescription.pmp:PrescriptionDrug.pmp:DispensedQuantity	
			Code List Qualifier	SCRIPT.Message.Body.RxHistoryResponse.MedicationDispensed.Quantity.CodeListQualifier [default value = 87]	N/A	
Unit Source Code	SCRIPT.Message.Body.RxHistoryResponse.MedicationDispensed.Quantity.QuantityUnitofMeasure.Code [default value = AC]		N/A			
Days Supply	SCRIPT.Message.Body.RxHistoryResponse.MedicationDispensed.DaysSupply		pmp:Prescription.pmp:PrescriptionDrug.pmp:DaysSupplyCount			
Date Filled	SCRIPT.Message.Body.RxHistoryResponse.MedicationDispensed.LastFillDate.Date		pmp:Prescription.pmp:PrescriptionFilledDate.nc:Date			
Substitutions	SCRIPT.Message.Body.RxHistoryResponse.MedicationDispensed.Substitutions [default value = 0]	N/A				

Section		CURES	NCPDP	NIEM	Attribute
		Species Code; Refills Authorized (values separated by .)	SCRIPT.Message.Body.RxHistoryResponse.MedicationDispensed.Note	Species Code: pmp:Prescription.pmp.Patient.pmp:SpeciesCode  Refills Authorized: pmp:Prescription.pmp.RefillsAuthorizedCount	
		Pharmacy NCPDPID	SCRIPT.Message.Body.RxHistoryResponse.MedicationDispensed.Pharmacy.Identification.NCPDPID [default value = -]	N/A	
		Pharmacy Number	SCRIPT.Message.Body.RxHistoryResponse.MedicationDispensed.Pharmacy.Identification.StateLicenseNumber	pmp:Prescription.Dispenser.pmp:StateLicenseIdentifier.nc:IdentificationID	
		Pharmacy NPI	SCRIPT.Message.Body.RxHistoryResponse.MedicationDispensed.Pharmacy.Identification.NPI [default value = -]	N/A	
		Pharmacy Name	SCRIPT.Message.Body.RxHistoryResponse.MedicationDispensed.Pharmacy.BusinessName	pmp:Prescription.pmp.Dispenser.nc:OrganizationName	
		Pharmacy Address	SCRIPT.Message.Body.RxHistoryResponse.MedicationDispensed.Pharmacy.Address.AddressLine1	pmp:Prescription.pmp.Dispenser.nc:OrganizationLocation.nc:LocationAddress.nc:StructuredAddress.nc:LocationStreet.nc:StreetFullText	
		Pharmacy City	SCRIPT.Message.Body.RxHistoryResponse.MedicationDispensed.Pharmacy.Address.Address.City	pmp:Prescription.pmp.Dispenser.nc:OrganizationLocation.nc:LocationAddress.nc:StructuredAddress.nc:LocationCityName	
		Pharmacy State	SCRIPT.Message.Body.RxHistoryResponse.MedicationDispensed.Pharmacy.Address.StateProvince	pmp:Prescription.pmp.Dispenser.nc:OrganizationLocation.nc:LocationAddress.nc:StructuredAddress.nc:LocationStateUSPostalServiceCode	
		Pharmacy Postal Code	SCRIPT.Message.Body.RxHistoryResponse.MedicationDispensed.Pharmacy.Address.PostalCode	pmp:Prescription.pmp.Dispenser.nc:OrganizationLocation.nc:LocationAddress.nc:StructuredAddress.nc:LocationPostalCode	
		Prescriber DEA	SCRIPT.Message.Body.RxHistoryResponse.MedicationDispensed.Prescriber.NonVeterinarian.Identification.DEANumber	pmp:Prescription.pmp.prescriber.pmp:DEANumberIdentifier.nc:IdentificationID	
		Prescriber NPI	SCRIPT.Message.Body.RxHistoryResponse.MedicationDispensed.Prescriber.NonVeterinarian.Identification.NPI [default value = -]	N/A	
		Prescriber Last Name, Prescriber First Name (Last name and first name separated by .) (Prescriber name is captured in the First and Last Name fields)	SCRIPT.Message.Body.RxHistoryResponse.MedicationDispensed.Prescriber.NonVeterinarian.Name.LastName	Prescriber Last Name: pmp:Prescription.pmp.prescriber.nc:PersonName.nc:PersonSurname	
		Prescriber Last Name, Prescriber First Name (Last name and first name separated by .) (Prescriber name is captured in the First and Last Name fields)	SCRIPT.Message.Body.RxHistoryResponse.MedicationDispensed.Prescriber.NonVeterinarian.Name.FirstName	Prescriber First Name: pmp:Prescription.pmp.prescriber.nc:PersonName.nc:PersonGivenName	
		Prescriber City	SCRIPT.Message.Body.RxHistoryResponse.MedicationDispensed.Prescriber.NonVeterinarian.Address.City	pmp:Prescription.pmp:PersonPrimaryContactInformation.nc:StructuredAddress.nc:LocationCityName	
		Prescription Number Qualifier	SCRIPT.Message.Body.RxHistoryResponse.MedicationDispensed.HistorySource.Source.SourceQualifier [default value = P2]	N/A	
		Pharmacy Prescription Number	SCRIPT.Message.Body.RxHistoryResponse.MedicationDispensed.HistorySource.SourceReference	pmp:Prescription.pmp.PrescriptionNumberText	
		Prescription Refill Number	SCRIPT.Message.Body.RxHistoryResponse.MedicationDispensed.HistorySource.FillNumber	pmp:Prescription.pmp:DrugRefillNumbercount	
		Payment Type	SCRIPT.Message.Body.RxHistoryResponse.MedicationDispensed.HistorySource.PaymentType	pmp:Prescription.pmp.MethodOfPaymentCode	
		Date Sold (NIEM does not support date sold default value is 1900-01-01)	SCRIPT.Message.Body.RxHistoryResponse.MedicationDispensed.OtherMedicationDate.OtherMedicationDate.Date	N/A	
		Date Sold Qualifier	SCRIPT.Message.Body.RxHistoryResponse.MedicationDispensed.OtherMedicationDate.OtherMedicationDateQualifier [default value = SoldDate]	N/A	
	Search	Search Time Range Start	SCRIPT.Message.Body.RxHistoryResponse.RequestedDates.StartDate.Date		
	Search	Search Time - Range End	SCRIPT.Message.Body.RxHistoryResponse.RequestedDates.EndDate.Date		

5.3 /IEWS/USERS-STATUS - REQUEST MAPPING OF CURES DATA TO NCPDP FORMAT

Section		CURES	NCPDP	Attribute	Required/Optional	
Message	Message	Message	SCRIPT.Message	DatatypesVersion="20170715" TransportVersion="20170715" TransactionDomain="SCRIPT" TransactionVersion="20170715" StructuresVersion="20170715" ECLVersion="20170715"	Required	
	Header	Message Envelope	Recipient of the Message	SCRIPT.Header.To	qualifier="ZZZ"	Required
			HIT System Identifier	SCRIPT.Header.From	qualifier="ZZZ"	Required
			Unique MessageID	SCRIPT.Header.MessageID		Required
			Sent Date/Time	SCRIPT.Header.SentTime		Required
			User ID of the Requesting Entity	SCRIPT.Header.Security.UsernameToken.Username		Required
			HIT System Hospital/Facility	SCRIPT.Header.Security.Sender.SecondaryIdentification		Required
			Description of Facility (Emergency, ICU)	SCRIPT.Header.Security.Sender.TertiaryIdentification		Optional
			Sender Software Developer	SCRIPT.Message.Header.SenderSoftware.SenderSoftwareDeveloper		Required
			Sender Software Product	SCRIPT.Message.Header.SenderSoftware.SenderSoftwareProduct		Required
	Sender Software Version Release	SCRIPT.Message.Header.SenderSoftware.SenderSoftwareVersionRelease		Required		
Body	Verify User Status Request	Verify Status Code	SCRIPT.Message.Body.Verify.VerifyStatus.Code [value = 010]		Required	
		Verify Status Description – Values must be specified: 1. <b>Identification Type:</b> S 2. <b>State License Number:</b> State License number for the Prescriber/Non-DEA Practitioner/Pharmacist 3. <b>Last Name:</b> Prescriber/Non-DEA Practitioner/Pharmacist Last Name 4. <b>First Name:</b> Prescriber/Non-DEA Practitioner/Pharmacist Last Name **Key values separated by ; <b>Example:</b> S;12345;LastName;FirstName	SCRIPT.Message.Body.Verify.VerifyStatus.Description [value = Identification Type;State License Number;Last Name;First Name]		Required	

### 5.3.1 /iews/users-status - Response Mapping of CURES Data to NCPDP Format

Section		CURES	NCPDP	Attribute	
XML Declaration		N/A	N/A	xml version="1.0" encoding="UTF-8" standalone="yes"	
Message	Message		SCRIPT.Message	DatatypesVersion="20170715" TransportVersion="20170715" TransactionDomain="SCRIPT" TransactionVersion="20170715" StructuresVersion="20170715" ECLVersion="20170715"	
	Header	Message Envelope	Recipient of the Message	SCRIPT.Message.Header.To	qualifier="ZZZ"
			Sender of the Message	SCRIPT.Message.Header.From	qualifier="ZZZ"
			Unique MessageID	SCRIPT.Message.Header.MessageID	
			Relates To MessageID	SCRIPT.Message.Header.RelatesToMessageID [value = MessageID for RxHistoryRequest]	
			Sent Date/Time	SCRIPT.Message.Header.SentTime	
			Sender Software Developer	SCRIPT.Message.Header.SenderSoftware.SenderSoftwareDeveloper	
			Sender Software Product	SCRIPT.Message.Header.SenderSoftware.SenderSoftwareProduct	
			Sender Software Version Release	SCRIPT.Message.Header.SenderSoftware.SenderSoftwareVersionRelease	
	Body	Status	Status Code	SCRIPT.Message.Body.Status.Code	
			Description Code	SCRIPT.Message.Body.Status.DescriptionCode	
			Description	SCRIPT.Message.Body.Status.Description	

**5.4 /IEWS/ENTITY-STATUS - REQUEST MAPPING OF CURES DATA TO NCPDP FORMAT**

Section		CURES	NCPDP	Attribute	Required/Optional	
Message	Message	Message	SCRIPT.Message	DatatypesVersion="20170715" TransportVersion="20170715" TransactionDomain="SCRIPT" TransactionVersion="20170715" StructuresVersion="20170715" ECLVersion="20170715"	Required	
	Header	Message Envelope	Recipient of the Message	SCRIPT.Header.To	qualifier="ZZZ"	Required
			HIT System Identifier	SCRIPT.Header.From	qualifier="ZZZ"	Required
			Unique MessageID	SCRIPT.Header.MessageID		Required
			Sent Date/Time	SCRIPT.Header.SentTime		Required
			User ID of the Requesting Entity	SCRIPT.Header.Security.UsernameToken.Username		Required
			HIT System Hospital/Facility	SCRIPT.Header.Security.Sender.SecondaryIdentification		Required
			Description of Facility (Emergency, ICU)	SCRIPT.Header.Security.Sender.TertiaryIdentification		Optional
			Sender Software Developer	SCRIPT.Message.Header.SenderSoftware.SenderSoftwareDeveloper		Required
			Sender Software Product	SCRIPT.Message.Header.SenderSoftware.SenderSoftwareProduct		Required
	Sender Software Version Release	SCRIPT.Message.Header.SenderSoftware.SenderSoftwareVersionRelease		Required		
	Body	Verify EntityStatus Request	Verify Status Code	SCRIPT.Message.Body.Verify.VerifyStatus.Code [value = 010]		Required
Description			SCRIPT.Message.Body.Verify.VerifyStatus.Description [value = REQUEST ENTITY STATUS]		Required	

**5.4.1 /iews/entity-status - Response Mapping of CURES Data to NCPDP Format**

Section		CURES	NCPDP	Attribute	
XML Declaration		N/A	N/A	xml version="1.0" encoding="UTF-8" standalone="yes"	
Message	Message	Message	SCRIPT.Message	DatatypesVersion="20170715" TransportVersion="20170715" TransactionDomain="SCRIPT" TransactionVersion="20170715" StructuresVersion="20170715" ECLVersion="20170715"	
	Header	Message Envelope	Recipient of the Message	SCRIPT.Message.Header.To	qualifier="ZZZ"
			Sender of the Message	SCRIPT.Message.Header.From	qualifier="ZZZ"
			Unique MessageID	SCRIPT.Message.Header.MessageID	
			Relates To MessageID Value = the messageID for the RxHistoryResponse	SCRIPT.Message.Header.RelatesToMessageID [value = MessageID for RxHistoryRequest]	
	Sent Date/Time	SCRIPT.Message.Header.SentTime			

			Sender Software Developer	SCRIPT.Message.Header.SenderSoftware.SenderSoftwareDeveloper	
			Sender Software Product	SCRIPT.Message.Header.SenderSoftware.SenderSoftwareProduct	
			Sender Software Version Release	SCRIPT.Message.Header.SenderSoftware.SenderSoftwareVersionRelease	
	Body	Status	Status Code	SCRIPT.Message.Body.Status.Code	
			Description Code	SCRIPT.Message.Body.Status.DescriptionCode	
			Description	SCRIPT.Message.Body.Status.Description	

## 6 HTTP HEADER

### 6.1 HTTP HEADER

The HTTP header will contain the following information for each transaction:

HTTP HEADER	
Content-Type	application/xml
X-payload-format	NCPDP
X-search-mode	E (exact) or P (partial)
X-picklist	Y (yes) or N (no)
X-payload-version	2017071

#### 6.1.1 Sample Header:

Content-Type	application/xml
X-payload-format	NCPDP
X-search-mode	P
X-picklist	Y
X-payload-version	2017071

#### 6.1.2 Default Values:

- The X-payload-format header will default to **NCPDP**, as this is the only supported format at this time.
- CURES data requests: the X-search-mode header will default to **P** (partial) if X-search-mode is not specified.
- The X-picklist header will default to **N** (No) if not specified.



## 7 ERROR AND STATUS CODES

The NCPDP Error and Status messages consist of a Code, Description Code, and Description. The CURES IEWS uses NCPDP defined codes to populate the Code element. The following table describes the NCPDP 2017071 status codes utilized by the application for the Code field in both error and status structure. If there is a functional failure, the system returns a NCPDP Error message. Requests that fail the NCPDP schema requirements and non-functional errors will result in an HTTP error message.

### 7.1 TRANSACTION CODES

NAME OF VALUE	CODE	STATUS CODE	TRANSACTION ERROR CODE
Transaction successful	000	X	
Configuration error	700		X
Transaction rejected	900		X

### 7.3 STATUS/ERROR CODES

The Description Code and Description fields are used to provide system-specific details regarding the error or status. The application has defined the following Status/Error Codes, Description Codes, and Descriptions:

Status/Error Code	Description Code	Description	Web Service URL(s)	Conditions
000	008	Requesting Entity account in good standing	<ul style="list-style-type: none"> <li>• /iews/entity-status</li> </ul>	MOU entity verifies their account status and the status of the MOU entity is <b>Active</b> .
000	103	MOU Entity account inactive. Access denied.	<ul style="list-style-type: none"> <li>• /iews/entity-status</li> </ul>	MOU entity verifies their account status and the status of the MOU entity is <b>Inactive</b> .
000	134	Active status, user has access.	<ul style="list-style-type: none"> <li>• /iews/users-status</li> </ul>	The status of the CURES user account is <b>active</b> .
000	144	User credentials do not match what was provided in initial inquiry.	<ul style="list-style-type: none"> <li>• /iews/prescriptions</li> </ul>	Users may only search using a <b>Patient Account Number</b> that they generated with their own initial /iews/patients inquiry.
000	210	Not authorized to search Other PDMP. Verify permissions in CURES.	<ul style="list-style-type: none"> <li>• /iews/patients</li> <li>• /iews/prescriptions</li> </ul>	Selected PDMP(s) do not allow the license type and/or role of the User. *Requesting user should verify their permissions by searching via <a href="https://cures.doj.ca.gov">https://cures.doj.ca.gov</a> .
000	220	User CURES application is pending approval.	<ul style="list-style-type: none"> <li>• /iews/users-status</li> <li>• /iews/patients</li> <li>• /iews/prescriptions</li> </ul>	The status of the CURES user account is <b>pending approval</b> .  *CURES application takes between 24-48 hours to process.

Status/Error Code	Description Code	Description	Web Service URL(s)	Conditions
000	500	User CURES account is suspended.	<ul style="list-style-type: none"> <li>• /iews/users-status</li> <li>• /iews/patients</li> <li>• /iews/prescriptions</li> </ul>	<p>The status of the CURES user account is <b>suspended</b>.</p> <p><b>*Requesting user should contact the CURES Help Desk.</b></p>
000	1000	No result found.	<ul style="list-style-type: none"> <li>• /iews/patients</li> </ul>	No patients with prescriptions found for the time searched.
000	2000	Invalid credential.	<ul style="list-style-type: none"> <li>• All</li> </ul>	Invalid MOU credentials.
000	3000	24 hours have lapsed since initial inquiry. Re-initiate PAR request.	<ul style="list-style-type: none"> <li>• /iews/prescriptions</li> </ul>	The <b>Patient Account Number</b> has expired because 24 hours have lapsed since the initial <b>/iews/patients</b> inquiry.
000	4000	User must complete Annual Update on CURES website to receive data.	<ul style="list-style-type: none"> <li>• /iews/users-status</li> <li>• /iews/patients</li> <li>• /iews/prescriptions</li> </ul>	The CURES user must complete their annual renewal via the CURES website.
000	4010	Multiple patient matches. Please search via <a href="https://cures.doj.ca.gov">https://cures.doj.ca.gov</a> .	<ul style="list-style-type: none"> <li>• /iews/patients</li> </ul>	The <b>/iews/patients</b> inquiry resulted in multiple patient matches and the MOU entity is unable to support a picklist.
000	4020	User credentials do not match any CURES account.	<ul style="list-style-type: none"> <li>• /iews/users-status</li> <li>• /iews/patients</li> <li>• /iews/prescriptions</li> </ul>	<p>No CURES account matching the <b>Last Name, First Name, and State License Number</b>.</p> <p><b>*Requesting user should verify that they are registered and that their credentials are accurate.</b></p>

Status/Error Code	Description Code	Description	Web Service URL(s)	Conditions
000	4030	User must complete Migrated User tasks on CURES website to get data.	<ul style="list-style-type: none"> <li>• /iews/users-status</li> <li>• /iews/patients</li> <li>• /iews/prescriptions</li> </ul>	Migrated CURES user must complete their Optimized CURES before they can access data via IEWS.
000	4040	Records exceed 300. Search <a href="https://cures.doj.ca.gov">https://cures.doj.ca.gov</a> for full results.	<ul style="list-style-type: none"> <li>• /iews/patients</li> <li>• /iews/prescriptions</li> </ul>	The prescription history for the patient exceeds 300 prescriptions.
700	210	Provided temporary patient ID does not exist.	<ul style="list-style-type: none"> <li>• /iews/prescriptions</li> </ul>	Invalid <b>Patient Account Number</b> submitted.
900	134	System error	<ul style="list-style-type: none"> <li>• All</li> </ul>	Generic system error.
900	144	Only one State/Province may be identified per request.	<ul style="list-style-type: none"> <li>• /iews/patients</li> </ul>	Inquiries can only contain one State/Province. To search multiple States/Provinces, separate inquiries are required for each State/Province.
900	220	Invalid or missing required verify user status field(s)	<ul style="list-style-type: none"> <li>• /iews/users-status</li> </ul>	Invalid or missing required verify user status field(s).
900	500	Invalid request or Missing data.	<ul style="list-style-type: none"> <li>• All</li> </ul>	Invalid request or missing data.

## 8 /IEWS/PATIENTS

### 8.1 /IEWS/PATIENTS OVERVIEW

Requests submitted to the **/iews/patients** web service are submitted via a RxHistoryRequest message. There are NCPDP tags within the RxHistoryRequest message that are not applicable to **/iews/patients** requests, but require a value (refer to [/iews/patients - Request Mapping of CURES Data to NCPDP Format](#) for details).

The RxHistoryRequest message is used for two types of data requests:

1. **CURES data requests** - CURES data requests are executed based on the search mode specified in the header and the information submitted in the Patient and Requested Dates sections.
2. **Interstate data requests** - Not all CURES users will be authorized to access another state's PDMP records, as these permissions are granted by the other state. The requesting user should verify their permissions by searching via <https://cures.doj.ca.gov>. **Individual RxHistoryRequest messages are required for each state a requestor wishes to query. It is imperative that requestor declares which state to query; the HIT system must not default to querying any other state/province.**

Interstate data requests will execute a search based on the information submitted in the Patient, Requested Dates, PDMP States Request sections. The requested state PDMP will execute the search per their defined search mode (exact or fuzzy/partial) irrespective of the search mode specified in the header.

**\* CURES data requests and Interstate data requests must be sent via separate RxHistoryRequest messages. A CURES RxHistoryRequest message must precede an Interstate RxHistoryRequest message.**

The RxHistoryRequest contains four major sections:

1. **Patient** - The system uses fields within the Patient section to query prescription data.

The following fields are required in the Patient section:

1. Patient First Name
2. Patient Last Name
3. Patient Gender (note: Patient Gender is required by NCPDP SCRIPT 2017071; the value 'U' (unspecified) will execute the query without filtering gender)
  - a. **\*\*If gender is specified ('M' or 'F') for Interstate data requests, it will be ignored.**
4. Patient Date of Birth

The following fields are optional fields for CURES data requests in the Patient section. **\*\*If provided for Interstate data requests, they will be ignored:**

1. Patient Street Address
2. Patient City
3. Patient State/Province

4. Patient Postal Code (5 digits)
  - a. Nine digit zip will yield no result.
2. **Prescriber or Pharmacy/Pharmacist** - The system uses certain fields to identify the CURES account of the Prescriber, Non-DEA Practitioner, or Pharmacist. Non-DEA Practitioner requests must be submitted using the Prescriber section. If the CURES account cannot be found or the account is not permitted to access CURES data, a Status message is returned.

***Prescriber/Non-DEA Practitioner:***

The following fields are required in the Prescriber section for a Prescriber and Non-DEA Practitioner query:

1. Prescriber/Non-DEA Practitioner State License Number, as registered in CURES
2. Prescriber/Non-DEA Practitioner NPI
3. Prescriber/Non-DEA Practitioner First Name, as registered in CURES
4. Prescriber/Non-DEA Practitioner Last Name, as registered in CURES

The Prescriber DEA Number is an optional field in the Prescriber section.

***Pharmacist:***

The following fields are required in the Pharmacy section for a Pharmacist query:

1. Pharmacist State License Number
2. Pharmacist First Name, as registered in CURES
3. Pharmacist Last Name, as registered in CURES
4. Pharmacy Business Name

3. **Requested Dates** - The RequestedDates section is used to specify the PAR search period. The maximum search period is the prior 24 months.

To accommodate requests generated outside of the Pacific Time Zone:

1. If the EndDate in the RequestedDates section is 1 day ahead of the Pacific Time Zone date, the system will adjust the EndDate to the current Pacific Time Zone calendar date.
2. If the StartDate in the RequestedDate section is 2 years and 1 day prior to the current Pacific Time Zone date, the system will adjust the StartDate to 2 years prior to the current Pacific Time Zone date.

If the StartDate or EndDate do not meet the aforementioned conditions, a status message is returned.

4. **PDMP States Requested (required for an Interstate data request)** - The PDMPStatesRequested section is optional. This section is used to specify the state to query for an Interstate data request.
  1. Multiple states cannot be queried in the same request. A RxHistoryRequest message must be submitted for each state.

2. When this section is included in the request, only the state identified in the request will be queried; California will not be queried.

## 8.2 CURES DATA RESPONSE

### 8.2.1 Single Patient Matched

Upon successful processing of an RxHistoryRequest message, the system returns an RxHistoryResponse message with the associated medication(s) dispensed if there is only one patient that matches the search criteria.

Important notes regarding the RxHistoryResponse. (Refer to [/iews/patients \(CURES Data Response for Single Patient Matched\) - Response Mapping of CURES Data to NCPDP Format](#) for details.):

2. The CURES database contains Schedule II, Schedule III, Schedule IV, and Schedule V prescription dispensation information for patients, as reported by California-licensed dispensers. The California Department of Justice does not independently verify the accuracy of the information reported by dispensers. The result is based on information available at the time the query was submitted and is subject to change as a result of subsequent reporting by dispensers.
3. If there is one patient match, the RxHistoryResponse message provides pertinent information about the patient and medication(s) dispensed.
4. There are tags within the RxHistoryResponse message that are not applicable to CURES, but require a value per NCPDP.
5. If **Date Sold** was not reported to CURES, the date sold value is **1900-01-01**.
6. Payment Type and Species Code is returned as a coded values (refer to [Payment Type Codes](#) and [Species Codes](#) for details).
7. Key values within the **DrugDescription** element are separated via a pipe (|).
8. Key values within the **Notes** element are separated via a semicolon (;).
9. Key values are truncated if they exceed the defined NCPDP length for an element.

### 8.2.2 Multiple Patients Matched

When there is more than one patient matched for a CURES data request, a picklist is returned via a RxHistoryResponse message to HIT systems that support a picklist. Otherwise, the system returns a status response. (Refer to [/iews/patients \(CURES Data Response for Multiple Patients Matched\) - Response Mapping of CURES Data to NCPDP Format](#) for details.)

The Patient Account Number(s) from the **/iews/patients** (RxHistoryResponse message) is used to obtain PAR via the **/iews/prescriptions** web service. (Refer to [/iews/prescriptions](#) for details.)

### 8.2.3 Status Message Response

Upon successful processing of an RxHistoryRequest message, a Status message is returned for the following conditions:

1. Invalid request dates provided.
2. The matched patient has more than 300 prescriptions.
3. There are no patient matches for the search.
4. The search yields multiple patient matches and the HIT system does not support a picklist.

(Refer to [Status/Error Codes](#) for details.)

### 8.3 INTERSTATE DATA RESPONSE

Upon successful processing of an RxHistoryRequest message, the system returns an RxHistoryResponse message. The RxHistoryResponse for Interstate data requests include a response status for each requested state (refer to [Interstate Response Codes](#) for details).

#### 8.3.1 Single Patient Matched

The system returns an RxHistoryResponse message with the associated medication(s) dispensed if there is only one patient that matched the search criteria. The XML structure for the CURES and Interstate data the RxHistoryResponse message is consistent with one another. (Refer to [/iews/patients \(Interstate Data Response for Single Patient Matched\) - Response Mapping of CURES Data to NCPDP Format](#) for details.)

Important notes regarding the Interstate RxHistoryResponse:

1. Controlled substance prescription dispensation information from a state other than California may appear in a different format than the CURES dispensation data format.
2. Interstate data is received by CURES via the NIEM XML-based information exchange framework. The NIEM elements are mapped to the RxHistoryResponse NCPDP elements.
3. The Interstate RxHistoryResponse follows the schema guidelines defined by NCPDP.
  - a. Apart from the defined default values in [/iews/patients \(Interstate Data Response for Single Patient Matched\) - Response Mapping of CURES Data to NCPDP Format](#), **Not Provided** is the default value if the state PDMP does not provide a value for a required NCPDP element.
  - b. If the state PDMP provides a null value for an optional NCPDP element, the corresponding tag is omitted from the RxHistoryResponse.
4. **Date Sold** is a default value: **1900-01-01**.
  - a. NIEM does not support date sold; however, for consistency between the CURES and Interstate data RxHistoryResponse structure, Date Sold is included as part of the Interstate RxHistoryResponse.
5. The state from which the prescription(s) originated from will not be identified as part of the prescription record.
  - a. To view the originating state, search the patient in the CURES web application.
6. Key values are truncated if they exceed the defined NCPDP length for an element.



(Refer to [/iews/patients \(Interstate Data Response for Single Patient Matched\) - Response Mapping of CURES Data to NCPDP Format](#) for details.)

### 8.3.2 Multiple Patients Matched

When there is more than one patient matched for an Interstate data request, a picklist is returned via a RxHistoryResponse message to HIT systems that support a picklist. Otherwise, the system returns a status response. (Refer to [/iews/patients \(Interstate Data Response for Multiple Patients Matched\) - Response Mapping of CURES Data to NCPDP Format](#) for details.)

The Patient Account Number(s) from the **/iews/patients** (RxHistoryResponse message) is used to obtain PAR via the **/iews/prescriptions** web service. (Refer to [/iews/prescriptions](#) for details.)

## 8.4 FAILED REQUEST

If there is a functional failure, the system returns a NCPDP Error message (refer to [Status/Error Codes](#) for details).

## 8.5 ERRED REQUEST

If the error is related to authentication or parsing the message, the CURES IEWS returns an HTTP error.

## 8.6 /IEWS/PATIENTS : CURES DATA REQUEST SAMPLES

*[NOTE: While there are additional data element fields available, those fields are not mandatory for a /iews/patients request but can be submitted as part of the request.]*

### 8.6.1 CURES Data: Prescriber/Non-DEA Practitioner Request

```
<?xml version="1.0" encoding="UTF-8"?>
<Message DatatypesVersion="20170715" TransportVersion="20170715"
  TransactionVersion="20170715" StructuresVersion="20170715"
  ECLVersion="20170715" TransactionDomain="SCRIPT"
  xmlns:xsi="http://www.w3.org/2001/XMLSchema-instance">
  <Header>
    <To Qualifier="ZZZ">cures</To>
    <From Qualifier="ZZZ">HIT System Identifier</From>
    <MessageID>CURES-PAR-REQUEST-001</MessageID>
    <SentTime>2019-02-20T11:22:47Z</SentTime>
    <Security>
      <UsernameToken>
        <Username>User ID of the Requesting Entity </Username>
      </UsernameToken>
      <Sender>
        <SecondaryIdentification>HIT System Hospital/Facility </SecondaryIdentification>
        <TertiaryIdentification>Description of Facility</TertiaryIdentification>
      </Sender>
    </Security>
    <SenderSoftware>
      <SenderSoftwareDeveloper>Developer</SenderSoftwareDeveloper>
    </SenderSoftware>
  </Header>
</Message>
```

```

    <SenderSoftwareProduct>DOJ Client</SenderSoftwareProduct>
    <SenderSoftwareVersionRelease>1.0</SenderSoftwareVersionRelease>
  </SenderSoftware>
</Header>
<Body>
  <RxHistoryRequest>
    <BenefitsCoordination>
      <Consent>Y</Consent>
    </BenefitsCoordination>
    <Patient>
      <HumanPatient>
        <Name>
          <LastName>AUFSMVQQ</LastName>
          <FirstName>EHXW Q2</FirstName>
        </Name>
        <Gender>U</Gender>
        <DateOfBirth>
          <Date>2013-06-26</Date>
        </DateOfBirth>
      </HumanPatient>
    </Patient>
    <Prescriber>
      <NonVeterinarian>
        <Identification>
          <StateLicenseNumber>A068984</StateLicenseNumber>
          <NPI>1234567890</NPI>
        </Identification>
        <Name>
          <LastName>Yoyfavyh</LastName>
          <FirstName>Nriwseyi</FirstName>
        </Name>
      </NonVeterinarian>
    </Prescriber>
    <RequestedDates>
      <StartDate>
        <Date>2020-06-25</Date>
      </StartDate>
      <EndDate>
        <Date>2020-12-09</Date>
      </EndDate>
    </RequestedDates>
  </RxHistoryRequest>
</Body>
</Message>

```

## 8.6.2 CURES Data: Pharmacist Request

```

<?xml version="1.0" encoding="UTF-8"?>
<Message DatatypesVersion="20170715" TransportVersion="20170715"
  TransactionVersion="20170715" StructuresVersion="20170715"
  ECLVersion="20170715" TransactionDomain="SCRIPT"
  xmlns:xsi="http://www.w3.org/2001/XMLSchema-instance">
  <Header>
    <To Qualifier="ZZZ">cures</To>
    <From Qualifier="ZZZ"> HIT System Identifier</From>
    <MessageID>CURES-PAR-REQUEST-001</MessageID>
    <SentTime>2019-02-20T11:22:47Z</SentTime>
    <Security>
      <UsernameToken>
        <Username> User ID of the Requesting Entity </Username>
      </UsernameToken>
      <Sender>
        <SecondaryIdentification> HIT System Hospital/Facility </SecondaryIdentification>
        <TertiaryIdentification> Description of Facility</TertiaryIdentification>
      </Sender>
    </Security>
  </Header>

```

```

</Security>
<SenderSoftware>
  <SenderSoftwareDeveloper>Developer</SenderSoftwareDeveloper>
  <SenderSoftwareProduct>DOJ Client</SenderSoftwareProduct>
  <SenderSoftwareVersionRelease>1.0</SenderSoftwareVersionRelease>
</SenderSoftware>
</Header>
<Body>
  <RxHistoryRequest>
    <BenefitsCoordination>
      <Consent>Y</Consent>
    </BenefitsCoordination>
    <Patient>
      <HumanPatient>
        <Name>
          <LastName>AUFSMVQQ</LastName>
          <FirstName>EHXW Q2</FirstName>
        </Name>
        <Gender>U</Gender>
        <DateOfBirth>
          <Date>2013-06-26</Date>
        </DateOfBirth>
      </HumanPatient>
    </Patient>
    <Pharmacy>
      <Pharmacist>
        <Identification>
          <StateLicenseNumber>aa000</StateLicenseNumber>
        </Identification>
        <Name>
          <LastName>testdecsixfn</LastName>
          <FirstName>LFWFAIK</FirstName>
        </Name>
      </Pharmacist>
      <BusinessName>RideAid Store#1024</BusinessName>
    </Pharmacy>
    <RequestedDates>
      <StartDate>
        <Date>2020-06-25</Date>
      </StartDate>
      <EndDate>
        <Date>2020-12-25</Date>
      </EndDate>
    </RequestedDates>
  </RxHistoryRequest>
</Body>
</Message>

```

## 8.7 /IEWS/PATIENTS: CURES DATA RESPONSE SAMPLES

### 8.7.1 CURES Data: One Patient Entity Result – Prescription Data Response

```

<?xml version="1.0" encoding="UTF-8" standalone="yes"?>
<Message DatatypesVersion="20170715" TransportVersion="20170715" TransactionDomain="SCRIPT"
TransactionVersion="20170715" StructuresVersion="20170715" ECLVersion="20170715">
  <Header>
    <To Qualifier="ZZZ">hie</To>
    <From Qualifier="ZZZ">cures</From>
    <MessageID>aeb94ebc-a48d-4bea-923c-ac250218357</MessageID>
    <RelatesToMessageID>CURES-PAR-REQUEST-001</RelatesToMessageID>
    <SentTime>2021-06-03T10:05:32.612-07:00</SentTime>
    <SenderSoftware>
      <SenderSoftwareDeveloper>CURES</SenderSoftwareDeveloper>
      <SenderSoftwareProduct>CURES</SenderSoftwareProduct>
      <SenderSoftwareVersionRelease>1.0</SenderSoftwareVersionRelease>
    </SenderSoftware>
  </Header>

```

```

</SenderSoftware>
</Header>
<Body>
  <RxHistoryResponse>
    <Response>
      <Approved/>
    </Response>
    <BenefitsCoordination>
      <Consent>Y</Consent>
    </BenefitsCoordination>
    <Patient>
      <HumanPatient xsi:type="Patient" xmlns:xsi="http://www.w3.org/2001/XMLSchema-instance">
        <Identification>
          <PatientAccountNumber>9ab0079070884a5abaf68f624982268d</PatientAccountNumber>
        </Identification>
        <Name>
          <LastName>AJGZBU</LastName>
          <FirstName>DRHEPA</FirstName>
        </Name>
        <Gender>F</Gender>
        <DateOfBirth>
          <Date>1960-03-23</Date>
        </DateOfBirth>
        <Address>
          <AddressLine1>5642 N 762UB LJ</AddressLine1>
          <City>DPYMWQZ</City>
          <StateProvince>CA</StateProvince>
          <PostalCode>88776</PostalCode>
        </Address>
      </HumanPatient>
    </Patient>
    <MedicationDispensed>
      <DrugDescription> HYDROCODONE BITARTRATE-ACETAMINOPHE | 650 MG-100 MG | TAB</DrugDescription>
      <DrugCoded>
        <ProductCode>
          <Code>406012401</Code>
          <Qualifier>ND</Qualifier>
        </ProductCode>
      </DrugCoded>
      <Quantity>
        <Value>90</Value>
        <CodeListQualifier>87</CodeListQualifier>
        <QuantityUnitOfMeasure>
          <Code>AC</Code>
        </QuantityUnitOfMeasure>
      </Quantity>
      <DaysSupply>22</DaysSupply>
      <LastFillDate>
        <Date>2020-04-21</Date>
      </LastFillDate>
      <Substitutions>0</Substitutions>
      <Note>SpeciesCode:01;RefillsAuthorized:0</Note>
      <Pharmacy>
        <Identification>
          <NCPDPID>-</NCPDPID>
          <StateLicenseNumber>PHY44247</StateLicenseNumber>
          <NPI>-</NPI>
        </Identification>
        <BusinessName>KSGKVC DTCCBAU 76432657</BusinessName>
        <Address>
          <AddressLine1>2086 THJSDZPVT GHBQ</AddressLine1>
          <City>SJGRJH QYCAL</City>
          <StateProvince>NY</StateProvince>
          <PostalCode>70403</PostalCode>
        </Address>
      </Pharmacy>
      <Prescriber>

```

```

<NonVeterinarian>
  <Identification>
    <DEANumber>HW3746632</DEANumber>
    <NPI>-</NPI>
  </Identification>
  <Name>
    <LastName>Cwdj, Elia</LastName>
    <FirstName>Cwdj, Elia</FirstName>
  </Name>
  <Address>
    <City>THBWVLM SECAM</City>
  </Address>
</NonVeterinarian>
</Prescriber>
<HistorySource xsi:type="HistorySourceWithPayment" xmlns:xsi="http://www.w3.org/2001/XMLSchema-instance">
  <Source>
    <SourceQualifier>P2</SourceQualifier>
  </Source>
  <SourceReference>2321669</SourceReference>
  <FillNumber>00</FillNumber>
  <PaymentType>3</PaymentType>
</HistorySource>
<OtherMedicationDate>
  <OtherMedicationDate>
    <Date>1900-01-01</Date>
  </OtherMedicationDate>
  <OtherMedicationDateQualifier>SoldDate</OtherMedicationDateQualifier>
</OtherMedicationDate>
</MedicationDispensed>
<MedicationDispensed>
  <DrugDescription>HYDROCODONE BITARTRATE-ACETAMINOPHE|325 MG-7.5 MG|TAB</DrugDescription>
  <DrugCoded>
    <ProductCode>
      <Code>406012401</Code>
      <Qualifier>ND</Qualifier>
    </ProductCode>
  </DrugCoded>
  <Quantity>
    <Value>90</Value>
    <CodeListQualifier>87</CodeListQualifier>
    <QuantityUnitOfMeasure>
      <Code>AC</Code>
    </QuantityUnitOfMeasure>
  </Quantity>
  <DaysSupply>22</DaysSupply>
  <LastFillDate>
    <Date>2020-05-21</Date>
  </LastFillDate>
  <Substitutions>0</Substitutions>
  <Note>SpeciesCode:01;RefillsAuthorized:0</Note>
  <Pharmacy>
    <Identification>
      <NCPDPID>-</NCPDPID>
      <StateLicenseNumber>PHY44247</StateLicenseNumber>
      <NPI>-</NPI>
    </Identification>
    <BusinessName>KSFGKV CDTCCBAU 76432657</BusinessName>
    <Address>
      <AddressLine1>2086 THJSDZPVT GHBQ</AddressLine1>
      <City>SJGRJH QYCAL</City>
      <StateProvince>NY</StateProvince>
      <PostalCode>70403</PostalCode>
    </Address>
  </Pharmacy>
</Prescriber>
  <NonVeterinarian>
    <Identification>

```

```

        <DEANumber>HW3746632</DEANumber>
        <NPI>-</NPI>
    </Identification>
    <Name>
        <LastName>Cwdj, Elia</LastName>
        <FirstName>Cwdj, Elia</FirstName>
    </Name>
    <Address>
        <City>THBWVLM SECAM</City>
    </Address>
    </NonVeterinarian>
</Prescriber>
<HistorySource xsi:type="HistorySourceWithPayment" xmlns:xsi="http://www.w3.org/2001/XMLSchema-instance">
    <Source>
        <SourceQualifier>P2</SourceQualifier>
    </Source>
    <SourceReference>2321669</SourceReference>
    <FillNumber>00</FillNumber>
    <PaymentType>3</PaymentType>
</HistorySource>
<OtherMedicationDate>
    <OtherMedicationDate>
        <Date>1900-01-01</Date>
    </OtherMedicationDate>
    <OtherMedicationDateQualifier>SoldDate</OtherMedicationDateQualifier>
</OtherMedicationDate>
</MedicationDispensed>
<MedicationDispensed>
    <DrugDescription>HYDROCODONE BITARTRATE-ACETAMINOPHE|325 MG-7.5 MG|TAB</DrugDescription>
    <DrugCoded>
        <ProductCode>
            <Code>406012401</Code>
            <Qualifier>ND</Qualifier>
        </ProductCode>
    </DrugCoded>
    <Quantity>
        <Value>90</Value>
        <CodeListQualifier>87</CodeListQualifier>
        <QuantityUnitOfMeasure>
            <Code>AC</Code>
        </QuantityUnitOfMeasure>
    </Quantity>
    <DaysSupply>22</DaysSupply>
    <LastFillDate>
        <Date>2020-06-21</Date>
    </LastFillDate>
    <Substitutions>0</Substitutions>
    <Note>SpeciesCode:01;RefillsAuthorized:0</Note>
    <Pharmacy>
        <Identification>
            <NCPDPID>-</NCPDPID>
            <StateLicenseNumber>PHY44247</StateLicenseNumber>
            <NPI>-</NPI>
        </Identification>
        <BusinessName>KSFQKV CDTCCBAU 76432657</BusinessName>
        <Address>
            <AddressLine1>2086 THJSDZPVT GHBQ</AddressLine1>
            <City>SJGRJH QYCAL</City>
            <StateProvince>NY</StateProvince>
            <PostalCode>70403</PostalCode>
        </Address>
    </Pharmacy>
</Prescriber>
    <NonVeterinarian>
        <Identification>
            <DEANumber>HW3746632</DEANumber>
            <NPI>-</NPI>

```

```

</Identification>
<Name>
  <LastName>Cwdj, Elia</LastName>
  <FirstName>Cwdj, Elia</FirstName>
</Name>
<Address>
  <City>THBWVLM SECAM</City>
</Address>
</NonVeterinarian>
</Prescriber>
<HistorySource xsi:type="HistorySourceWithPayment" xmlns:xsi="http://www.w3.org/2001/XMLSchema-instance">
  <Source>
    <SourceQualifier>P2</SourceQualifier>
  </Source>
  <SourceReference>2321669</SourceReference>
  <FillNumber>00</FillNumber>
  <PaymentType>3</PaymentType>
</HistorySource>
<OtherMedicationDate>
  <OtherMedicationDate>
    <Date>1900-01-01</Date>
  </OtherMedicationDate>
  <OtherMedicationDateQualifier>SoldDate</OtherMedicationDateQualifier>
</OtherMedicationDate>
</MedicationDispensed>
<MedicationDispensed>
  <DrugDescription>HYDROCODONE BITARTRATE-ACETAMINOPHE|325 MG-7.5 MG |TAB</DrugDescription>
  <DrugCoded>
    <ProductCode>
      <Code>406012401</Code>
      <Qualifier>ND</Qualifier>
    </ProductCode>
  </DrugCoded>
  <Quantity>
    <Value>90</Value>
    <CodeListQualifier>87</CodeListQualifier>
    <QuantityUnitOfMeasure>
      <Code>AC</Code>
    </QuantityUnitOfMeasure>
  </Quantity>
  <DaysSupply>22</DaysSupply>
  <LastFillDate>
    <Date>2020-07-21</Date>
  </LastFillDate>
  <Substitutions>0</Substitutions>
  <Note>SpeciesCode:01;RefillsAuthorized:0</Note>
  <Pharmacy>
    <Identification>
      <NCPDPID>-</NCPDPID>
      <StateLicenseNumber>PHY44247</StateLicenseNumber>
      <NPI>-</NPI>
    </Identification>
    <BusinessName>KSFGKV CDTCCBAU 76432657</BusinessName>
    <Address>
      <AddressLine1>2086 THJSDZPVT GHBQ</AddressLine1>
      <City>SJGRJH QYCAL</City>
      <StateProvince>NY</StateProvince>
      <PostalCode>70403</PostalCode>
    </Address>
  </Pharmacy>
</Prescriber>
  <NonVeterinarian>
    <Identification>
      <DEANumber>HW3746632</DEANumber>
      <NPI>-</NPI>
    </Identification>
    <Name>

```

```

        <LastName>Cwdj, Elia</LastName>
        <FirstName>Cwdj, Elia</FirstName>
    </Name>
    <Address>
        <City>THBWVLM SECAM</City>
    </Address>
    </NonVeterinarian>
</Prescriber>
<HistorySource xsi:type="HistorySourceWithPayment" xmlns:xsi="http://www.w3.org/2001/XMLSchema-instance">
    <Source>
        <SourceQualifier>P2</SourceQualifier>
    </Source>
    <SourceReference>2321669</SourceReference>
    <FillNumber>00</FillNumber>
    <PaymentType>3</PaymentType>
</HistorySource>
    <OtherMedicationDate>
        <OtherMedicationDate>
            <Date>1900-01-01</Date>
        </OtherMedicationDate>
        <OtherMedicationDateQualifier>SoldDate</OtherMedicationDateQualifier>
    </OtherMedicationDate>
</MedicationDispensed>
<RequestedDates>
    <StartDate>
        <Date>2020-03-25</Date>
    </StartDate>
    <EndDate>
        <Date>2020-12-09</Date>
    </EndDate>
</RequestedDates>
</RxHistoryResponse>
</Body>
</Message>

```

## 8.7.2 CURES Data: Multiple Patients Matched (for Picklist) Response

```

<?xml version="1.0" encoding="UTF-8" standalone="yes"?>
<Message DatatypesVersion="20170715" TransportVersion="20170715" TransactionDomain="SCRIPT"
TransactionVersion="20170715" StructuresVersion="20170715" ECLVersion="20170715">
    <Header>
        <To Qualifier="ZZZ">hie</To>
        <From Qualifier="ZZZ">cures</From>
        <MessageID>9d3131b9-5136-4952-905f-57a51cb2b21</MessageID>
        <RelatesToMessageID>CURES-PAR-REQUEST-001</RelatesToMessageID>
        <SentTime>2021-06-03T06:45:12.622-07:00</SentTime>
        <SenderSoftware>
            <SenderSoftwareDeveloper>CURES</SenderSoftwareDeveloper>
            <SenderSoftwareProduct>CURES</SenderSoftwareProduct>
            <SenderSoftwareVersionRelease>1.0</SenderSoftwareVersionRelease>
        </SenderSoftware>
    </Header>
    <Body>
        <RxHistoryResponse>
            <Response>
                <Denied/>
            </Response>
            <BenefitsCoordination>
                <Consent>Y</Consent>
            </BenefitsCoordination>
            <Patient>
                <HumanPatient>
                    <Name>
                        <LastName>AUFSMVQQ</LastName>
                        <FirstName>EHXW Q2</FirstName>
                    </Name>

```



```

    <Gender>U</Gender>
    <DateOfBirth>
      <Date>2013-06-26</Date>
    </DateOfBirth>
  </HumanPatient>
</Patient>
<MedicationDispensed>
  <DrugDescription>Use Patient Account Number(s) from this response to get a PAR via the /iews/prescriptions web
service.</DrugDescription>
  <Quantity>
    <Value>0</Value>
    <CodeListQualifier>87</CodeListQualifier>
    <QuantityUnitOfMeasure>
      <Code>AC</Code>
    </QuantityUnitOfMeasure>
  </Quantity>
  <LastFillDate>
    <Date>1900-01-01</Date>
  </LastFillDate>
  <Substitutions>0</Substitutions>
  <Note>SpeciesCode:02;RxCount:11;AnimalName:HAMILTON,IRIS K9</Note>
<Patient>
  <Identification>
    <PatientAccountNumber>a6f6e9eca1aa413a955e442c133517b1</PatientAccountNumber>
  </Identification>
  <Name>
    <LastName>AUFMSVQQ</LastName>
    <FirstName>EHXW Q2</FirstName>
  </Name>
  <Gender>F</Gender>
  <DateOfBirth>
    <Date>2013-06-26</Date>
  </DateOfBirth>
  <Address>
    <AddressLine1>863 VDWQLC NDUK</AddressLine1>
    <City>IZYAHSEJ</City>
    <StateProvince>CA</StateProvince>
    <PostalCode>07152</PostalCode>
  </Address>
</Patient>
<OtherMedicationDate>
  <OtherMedicationDate>
    <Date>1900-01-01</Date>
  </OtherMedicationDate>
  <OtherMedicationDateQualifier>SoldDate</OtherMedicationDateQualifier>
</OtherMedicationDate>
</MedicationDispensed>
<MedicationDispensed>
  <DrugDescription>Use Patient Account Number(s) from this response to get a PAR via the /iews/prescriptions web
service.</DrugDescription>
  <Quantity>
    <Value>0</Value>
    <CodeListQualifier>87</CodeListQualifier>
    <QuantityUnitOfMeasure>
      <Code>AC</Code>
    </QuantityUnitOfMeasure>
  </Quantity>
  <LastFillDate>
    <Date>1900-01-01</Date>
  </LastFillDate>
  <Substitutions>0</Substitutions>
  <Note>SpeciesCode:02;RxCount:2;AnimalName:NOT REPORTED</Note>
<Patient>
  <Identification>
    <PatientAccountNumber>0b63df291a214091aac5b4e68d350d19</PatientAccountNumber>
  </Identification>
  <Name>

```

```

        <LastName>AUFSMVQQ</LastName>
        <FirstName>EHXW Q2</FirstName>
    </Name>
    <Gender>F</Gender>
    <DateOfBirth>
        <Date>2013-06-26</Date>
    </DateOfBirth>
    <Address>
        <AddressLine1>863 VDWQLC NDUK</AddressLine1>
        <City>IZYAHSEJ</City>
        <StateProvince>CA</StateProvince>
        <PostalCode>07152</PostalCode>
    </Address>
</Patient>
<OtherMedicationDate>
    <OtherMedicationDate>
        <Date>1900-01-01</Date>
    </OtherMedicationDate>
    <OtherMedicationDateQualifier>SoldDate</OtherMedicationDateQualifier>
</OtherMedicationDate>
</MedicationDispensed>
<MedicationDispensed>
    <DrugDescription>Use Patient Account Number(s) from this response to get a PAR via the /iews/prescriptions web
service.</DrugDescription>
    <Quantity>
        <Value>0</Value>
        <CodeListQualifier>87</CodeListQualifier>
        <QuantityUnitOfMeasure>
            <Code>AC</Code>
        </QuantityUnitOfMeasure>
    </Quantity>
    <LastFillDate>
        <Date>1900-01-01</Date>
    </LastFillDate>
    <Substitutions>0</Substitutions>
    <Note>SpeciesCode:01;RxCount:4;AnimalName:</Note>
</Patient>
    <Identification>
        <PatientAccountNumber>78b40cb0af484d0e8163a3d7f93af69f</PatientAccountNumber>
    </Identification>
    <Name>
        <LastName>AUFSMVQQ</LastName>
        <FirstName>EHXW Q2</FirstName>
    </Name>
    <Gender>F</Gender>
    <DateOfBirth>
        <Date>2013-06-26</Date>
    </DateOfBirth>
    <Address>
        <AddressLine1>863 VDWQLC NDUK</AddressLine1>
        <City>IZYAHSEJ</City>
        <StateProvince>CA</StateProvince>
        <PostalCode>07152</PostalCode>
    </Address>
</Patient>
<OtherMedicationDate>
    <OtherMedicationDate>
        <Date>1900-01-01</Date>
    </OtherMedicationDate>
    <OtherMedicationDateQualifier>SoldDate</OtherMedicationDateQualifier>
</OtherMedicationDate>
</MedicationDispensed>
<RequestedDates>
    <StartDate>
        <Date>2020-06-25</Date>
    </StartDate>
</RequestedDates>
<EndDate>

```

```

        <Date>2020-12-09</Date>
      </EndDate>
    </RequestedDates>
  </RxHistoryResponse>
</Body>
</Message>

```

### 8.7.3 CURES Data: Multiple Patients Matched (for Non-Picklist) Response

```

<?xml version="1.0" encoding="UTF-8" standalone="yes"?>
<Message DatatypesVersion="20170715" TransportVersion="20170715" TransactionDomain="SCRIPT"
TransactionVersion="20170715" StructuresVersion="20170715" ECLVersion="20170715">
  <Header>
    <To Qualifier="ZZZ">hie</To>
    <From Qualifier="ZZZ">cures</From>
    <MessageID>88bc6447-84fc-491f-a602-ed81196a05b</MessageID>
    <RelatesToMessageID>CURES-PAR-REQUEST-001</RelatesToMessageID>
    <SentTime>2019-08-22T13:52:16.462-07:00</SentTime>
    <SenderSoftware>
      <SenderSoftwareDeveloper>CURES</SenderSoftwareDeveloper>
      <SenderSoftwareProduct>CURES</SenderSoftwareProduct>
      <SenderSoftwareVersionRelease>1.0</SenderSoftwareVersionRelease>
    </SenderSoftware>
  </Header>
  <Body>
    <Status>
      <Code>000</Code>
      <DescriptionCode>103</DescriptionCode>
      <Description>Multiple patient matches. Please search via https://cures.doj.ca.gov.</Description>
    </Status>
  </Body>
</Message>

```

### 8.7.4 CURES Data: No Result (Status Response)

```

<?xml version="1.0" encoding="UTF-8" standalone="yes"?>
<Message DatatypesVersion="20170715" TransportVersion="20170715" TransactionDomain="SCRIPT"
TransactionVersion="20170715" StructuresVersion="20170715" ECLVersion="20170715">
  <Header>
    <To Qualifier="ZZZ">hie</To>
    <From Qualifier="ZZZ">cures</From>
    <MessageID>1ba9a1cf-fa9a-4b00-bc7c-a4e2c6d9bb7</MessageID>
    <RelatesToMessageID>CURES-PAR-REQUEST-001</RelatesToMessageID>
    <SentTime>2019-08-22T13:53:32.669-07:00</SentTime>
    <SenderSoftware>
      <SenderSoftwareDeveloper>CURES</SenderSoftwareDeveloper>
      <SenderSoftwareProduct>CURES</SenderSoftwareProduct>
      <SenderSoftwareVersionRelease>1.0</SenderSoftwareVersionRelease>
    </SenderSoftware>
  </Header>
  <Body>
    <Status>
      <Code>000</Code>
      <DescriptionCode>1000</DescriptionCode>
      <Description>No result found.</Description>
    </Status>
  </Body>
</Message>

```

## 8.8 /IEWS/PATIENTS: INTERSTATE DATA REQUEST SAMPLE

```

<?xml version="1.0" encoding="UTF-8"?>

```

```

<Message DatatypesVersion="20170715" TransportVersion="20170715"
  TransactionVersion="20170715" StructuresVersion="20170715"
  ECLVersion="20170715" TransactionDomain="SCRIPT"
  xmlns:xsi="http://www.w3.org/2001/XMLSchema-instance">
  <Header>
    <To Qualifier="ZZZ">cures</To>
    <From Qualifier="ZZZ"> HIT System Identifier </From>
    <MessageID>INTERSTATE-PAR-REQUEST-001</MessageID>
    <SentTime>2019-02-20T11:22:47Z</SentTime>
    <Security>
      <UsernameToken>
        <Username> User ID of the Requesting Entity </Username>
      </UsernameToken>
      <Sender>
        <SecondaryIdentification> HIT System Hospital/Facility </SecondaryIdentification>
        <TertiaryIdentification>Description of Facility</TertiaryIdentification>
      </Sender>
    </Security>
    <SenderSoftware>
      <SenderSoftwareDeveloper>Developer</SenderSoftwareDeveloper>
      <SenderSoftwareProduct>DOJ Client</SenderSoftwareProduct>
      <SenderSoftwareVersionRelease>1.0</SenderSoftwareVersionRelease>
    </SenderSoftware>
  </Header>
  <Body>
    <RxHistoryRequest>
      <BenefitsCoordination>
        <Consent>Y</Consent>
      </BenefitsCoordination>
      <Patient>
        <HumanPatient>
          <Name>
            <LastName>AUFSMVQQ</LastName>
            <FirstName>EHXW Q2</FirstName>
          </Name>
          <Gender>U</Gender>
          <DateOfBirth>
            <Date>2013-06-26</Date>
          </DateOfBirth>
        </HumanPatient>
      </Patient>
      <Pharmacy>
        <Pharmacist>
          <Identification>
            <StateLicenseNumber>aa000</StateLicenseNumber>
          </Identification>
          <Name>
            <LastName>testdecsixfn</LastName>
            <FirstName>LFWFAIK</FirstName>
          </Name>
        </Pharmacist>
        <BusinessName>RideAid Store#1024</BusinessName>
      </Pharmacy>
      <RequestedDates>
        <StartDate>
          <Date>2020-06-25</Date>
        </StartDate>
        <EndDate>
          <Date>2020-12-25</Date>
        </EndDate>
      </RequestedDates>
      <PDMPStatesRequested>
        <StateProvince>NV</StateProvince>
      </PDMPStatesRequested>
    </RxHistoryRequest>
  </Body>
</Message>

```

## 8.9 /IEWS/PATIENTS: INTERSTATE DATA RESPONSE SAMPLES

### 8.9.1 Interstate: One Patient Entity Result – Prescription Data Response

\*\*In this sample response, the patient attributes pulled identical result responses from two different states. As a result, they are combined into one patient entity result response (prescription data response).

```
<?xml version="1.0" encoding="UTF-8" standalone="yes"?>
<Message DatatypesVersion="20170715" TransportVersion="20170715" TransactionDomain="SCRIPT"
TransactionVersion="20170715" StructuresVersion="20170715" ECLVersion="20170715">
  <Header>
    <To Qualifier="ZZZ">hie</To>
    <From Qualifier="ZZZ">cures</From>
    <MessageID>260ca4d3-ddaa-4cc1-bb04-c474cf65095</MessageID>
    <RelatesToMessageID>INTERSTATE PAR-REQUEST-001</RelatesToMessageID>
    <SentTime>2021-06-03T04:52:43.510-07:00</SentTime>
    <SenderSoftware>
      <SenderSoftwareDeveloper>CURES</SenderSoftwareDeveloper>
      <SenderSoftwareProduct>CURES</SenderSoftwareProduct>
      <SenderSoftwareVersionRelease>1.0</SenderSoftwareVersionRelease>
    </SenderSoftware>
  </Header>
  <Body>
    <RxHistoryResponse>
      <Response>
        <Approved/>
      </Response>
      <BenefitsCoordination>
        <Consent>Y</Consent>
      </BenefitsCoordination>
      <Patient>
        <HumanPatient xsi:type="Patient" xmlns:xsi="http://www.w3.org/2001/XMLSchema-instance">
          <Identification>
            <PatientAccountNumber>fbc921d31dd34b638582d1a1df409e28</PatientAccountNumber>
          </Identification>
          <Name>
            <LastName>AUFSMVQQ</LastName>
            <FirstName>EHXW Q2</FirstName>
          </Name>
          <Gender>U</Gender>
          <DateOfBirth>
            <Date>2013-06-26</Date>
          </DateOfBirth>
        </HumanPatient>
      </Patient>
      <MedicationDispensed>
        <DrugDescription> HYDROCODONE BITARTRATE-ACETAMINOPHE | 650 MG-100 MG | TAB</DrugDescription>
        <DrugCoded>
          <ProductCode>
            <Code>406012401</Code>
            <Qualifier>ND</Qualifier>
          </ProductCode>
        </DrugCoded>
        <Quantity>
          <Value>90</Value>
          <CodeListQualifier>87</CodeListQualifier>
          <QuantityUnitOfMeasure>
            <Code>AC</Code>
          </QuantityUnitOfMeasure>
        </Quantity>
        <DaysSupply>22</DaysSupply>
        <LastFillDate>
```

```

        <Date>2020-04-21</Date>
    </LastFillDate>
    <Substitutions>0</Substitutions>
    <Note>SpeciesCode:01;RefillsAuthorized:0</Note>
    <Pharmacy>
        <Identification>
            <NCPDPID>-</NCPDPID>
            <StateLicenseNumber>PHY44247</StateLicenseNumber>
            <NPI>-</NPI>
        </Identification>
        <BusinessName>KSFGKV CDTCCBAU 76432657</BusinessName>
        <Address>
            <AddressLine1>2086 THJSDZPVT GHBQ</AddressLine1>
            <City>SJGRJJH QYCAL</City>
            <StateProvince>NV</StateProvince>
            <PostalCode>70403</PostalCode>
        </Address>
    </Pharmacy>
    <Prescriber>
        <NonVeterinarian>
            <Identification>
                <DEANumber>HW3746632</DEANumber>
                <NPI>-</NPI>
            </Identification>
            <Name>
                <LastName>Cwdj, Elia</LastName>
                <FirstName>Cwdj, Elia</FirstName>
            </Name>
            <Address>
                <City>THBWVLM SECAM</City>
            </Address>
        </NonVeterinarian>
    </Prescriber>
    <HistorySource xsi:type="HistorySourceWithPayment" xmlns:xsi="http://www.w3.org/2001/XMLSchema-instance">
        <Source>
            <SourceQualifier>P2</SourceQualifier>
        </Source>
        <SourceReference>2321669</SourceReference>
        <FillNumber>00</FillNumber>
        <PaymentType>3</PaymentType>
    </HistorySource>
        <Patient>
            <Identification>
                <PatientAccountNumber>a6f6e9eca1aa413a955e442c133517b1</PatientAccountNumber>
            </Identification>
            <Name>
                <LastName>AUFSMVQQ</LastName>
                <FirstName>EHXW Q2</FirstName>
            </Name>
            <Gender>F</Gender>
            <DateOfBirth>
                <Date>2013-06-26</Date>
            </DateOfBirth>
            <Address>
                <AddressLine1>863 VDWQLC NDUK</AddressLine1>
                <City>ZYAHSEJ</City>
                <StateProvince>WA</StateProvince>
                <PostalCode>07152</PostalCode>
            </Address>
        </Patient>
        <OtherMedicationDate>
            <OtherMedicationDate>
                <Date>1900-01-01</Date>
            </OtherMedicationDate>
            <OtherMedicationDateQualifier>SoldDate</OtherMedicationDateQualifier>
        </OtherMedicationDate>
    </MedicationDispensed>

```

```

<MedicationDispensed>
  <DrugDescription>HYDROCODONE BITARTRATE-ACETAMINOPHE|325 MG-7.5 MG|TAB</DrugDescription>
  <DrugCoded>
    <ProductCode>
      <Code>406012401</Code>
      <Qualifier>ND</Qualifier>
    </ProductCode>
  </DrugCoded>
  <Quantity>
    <Value>90</Value>
    <CodeListQualifier>87</CodeListQualifier>
    <QuantityUnitOfMeasure>
      <Code>AC</Code>
    </QuantityUnitOfMeasure>
  </Quantity>
  <DaysSupply>22</DaysSupply>
  <LastFillDate>
    <Date>2020-05-21</Date>
  </LastFillDate>
  <Substitutions>0</Substitutions>
  <Note>SpeciesCode:01;RefillsAuthorized:0</Note>
  <Pharmacy>
    <Identification>
      <NCPDPID>-</NCPDPID>
      <StateLicenseNumber>PHY44247</StateLicenseNumber>
      <NPI>-</NPI>
    </Identification>
    <BusinessName>KSFGKV CDTCCBAU 76432657</BusinessName>
    <Address>
      <AddressLine1>2086 THJSDZPVT GHBQ</AddressLine1>
      <City>SJGRJH QYCAL</City>
      <StateProvince>NV</StateProvince>
      <PostalCode>70403</PostalCode>
    </Address>
  </Pharmacy>
  <Prescriber>
    <NonVeterinarian>
      <Identification>
        <DEANumber>HW3746632</DEANumber>
        <NPI>-</NPI>
      </Identification>
      <Name>
        <LastName>Cwdj, Elia</LastName>
        <FirstName>Cwdj, Elia</FirstName>
      </Name>
      <Address>
        <City>THBWVLM SECAM</City>
      </Address>
    </NonVeterinarian>
  </Prescriber>
  <HistorySource xsi:type="HistorySourceWithPayment" xmlns:xsi="http://www.w3.org/2001/XMLSchema-instance">
    <Source>
      <SourceQualifier>P2</SourceQualifier>
    </Source>
    <SourceReference>2321669</SourceReference>
    <FillNumber>00</FillNumber>
    <PaymentType>3</PaymentType>
  </HistorySource>
    <Patient>
      <Identification>
        <PatientAccountNumber>a6f6e9eca1aa413a955e442c133517b1</PatientAccountNumber>
      </Identification>
      <Name>
        <LastName>AUFSMVQQ</LastName>
        <FirstName>EHXW Q2</FirstName>
      </Name>
      <Gender>F</Gender>
    </Patient>
  </HistorySource>

```

```

<DateOfBirth>
  <Date>2013-06-26</Date>
</DateOfBirth>
<Address>
  <AddressLine1>863 VDWQLC NDUK</AddressLine1>
  <City>IZYAHSEJ</City>
  <StateProvince>WA</StateProvince>
  <PostalCode>07152</PostalCode>
</Address>
</Patient>
<OtherMedicationDate>
  <OtherMedicationDate>
    <Date>1900-01-01</Date>
  </OtherMedicationDate>
  <OtherMedicationDateQualifier>SoldDate</OtherMedicationDateQualifier>
</OtherMedicationDate>
</MedicationDispensed>
<MedicationDispensed>
  <DrugDescription>HYDROCODONE BITARTRATE-ACETAMINOPHE|325 MG-7.5 MG |TAB</DrugDescription>
  <DrugCoded>
    <ProductCode>
      <Code>406012401</Code>
      <Qualifier>ND</Qualifier>
    </ProductCode>
  </DrugCoded>
  <Quantity>
    <Value>90</Value>
    <CodeListQualifier>87</CodeListQualifier>
    <QuantityUnitOfMeasure>
      <Code>AC</Code>
    </QuantityUnitOfMeasure>
  </Quantity>
  <DaysSupply>22</DaysSupply>
  <LastFillDate>
    <Date>2020-06-21</Date>
  </LastFillDate>
  <Substitutions>0</Substitutions>
  <Note>SpeciesCode:01;RefillsAuthorized:0</Note>
  <Pharmacy>
    <Identification>
      <NCPDPID>-</NCPDPID>
      <StateLicenseNumber>PHY44247</StateLicenseNumber>
      <NPI>-</NPI>
    </Identification>
    <BusinessName>KSFGKV CDTCCBAU 76432657</BusinessName>
    <Address>
      <AddressLine1>2086 THJSDZPVT GHBQ</AddressLine1>
      <City>SJGRJH QYCAL</City>
      <StateProvince>NV</StateProvince>
      <PostalCode>70403</PostalCode>
    </Address>
  </Pharmacy>
  <Prescriber>
    <NonVeterinarian>
      <Identification>
        <DEANumber>HW3746632</DEANumber>
        <NPI>-</NPI>
      </Identification>
      <Name>
        <LastName>Cwdj, Elia</LastName>
        <FirstName>Cwdj, Elia</FirstName>
      </Name>
      <Address>
        <City>THBWVLM SECAM</City>
      </Address>
    </NonVeterinarian>
  </Prescriber>

```



```

<HistorySource xsi:type="HistorySourceWithPayment" xmlns:xsi="http://www.w3.org/2001/XMLSchema-instance">
  <Source>
    <SourceQualifier>P2</SourceQualifier>
  </Source>
  <SourceReference>2321669</SourceReference>
  <FillNumber>00</FillNumber>
  <PaymentType>3</PaymentType>
</HistorySource>

  <Patient>

    <Identification>
      <PatientAccountNumber>a6f6e9eca1aa413a955e442c133517b1</PatientAccountNumber>
    </Identification>
    <Name>
      <LastName>AUFSMVQQ</LastName>
      <FirstName>EHXW Q2</FirstName>
    </Name>
    <Gender>F</Gender>
    <DateOfBirth>
      <Date>2013-06-26</Date>
    </DateOfBirth>
    <Address>
      <AddressLine1>863 VDWQLC NDUK</AddressLine1>
      <City>ZYAHSEJ</City>
      <StateProvince>WA</StateProvince>
      <PostalCode>07152</PostalCode>
    </Address>
  </Patient>
  <OtherMedicationDate>
    <OtherMedicationDate>
      <Date>1900-01-01</Date>
    </OtherMedicationDate>
    <OtherMedicationDateQualifier>SoldDate</OtherMedicationDateQualifier>
  </OtherMedicationDate>
</MedicationDispensed>
<MedicationDispensed>
  <DrugDescription>HYDROCODONE BITARTRATE-ACETAMINOPHE|325 MG-7.5 MG|TAB</DrugDescription>
  <DrugCoded>
    <ProductCode>
      <Code>406012401</Code>
      <Qualifier>ND</Qualifier>
    </ProductCode>
  </DrugCoded>
  <Quantity>
    <Value>90</Value>
    <CodeListQualifier>87</CodeListQualifier>
    <QuantityUnitOfMeasure>
      <Code>AC</Code>
    </QuantityUnitOfMeasure>
  </Quantity>
  <DaysSupply>22</DaysSupply>
  <LastFillDate>
    <Date>2020-07-21</Date>
  </LastFillDate>
  <Substitutions>0</Substitutions>
  <Note>SpeciesCode:01;RefillsAuthorized:0</Note>
  <Pharmacy>
    <Identification>
      <NCPDPID>-</NCPDPID>
      <StateLicenseNumber>PHY44247</StateLicenseNumber>
      <NPI>-</NPI>
    </Identification>
    <BusinessName>KSFGKV CDTCCBAU 76432657</BusinessName>
    <Address>
      <AddressLine1>2086 THJSDZPVT GHBQ</AddressLine1>
      <City>SJGRJH QYCAL</City>
      <StateProvince>NV</StateProvince>
      <PostalCode>70403</PostalCode>
    </Address>
  </Pharmacy>

```

```

    </Address>
  </Pharmacy>
  <Prescriber>
    <NonVeterinarian>
      <Identification>
        <DEANumber>HW3746632</DEANumber>
        <NPI>-</NPI>
      </Identification>
      <Name>
        <LastName>Cwdj, Elia</LastName>
        <FirstName>Cwdj, Elia</FirstName>
      </Name>
      <Address>
        <City>THBWVLM SECAM</City>
      </Address>
    </NonVeterinarian>
  </Prescriber>
  <HistorySource xsi:type="HistorySourceWithPayment" xmlns:xsi="http://www.w3.org/2001/XMLSchema-instance">
    <Source>
      <SourceQualifier>P2</SourceQualifier>
    </Source>
    <SourceReference>2321669</SourceReference>
    <FillNumber>00</FillNumber>
    <PaymentType>3</PaymentType>
  </HistorySource>
    <Patient>
      <Identification>
        <PatientAccountNumber>a6f6e9eca1aa413a955e442c133517b1</PatientAccountNumber>
      </Identification>
      <Name>
        <LastName>AUFSMVQQ</LastName>
        <FirstName>EHXW Q2</FirstName>
      </Name>
      <Gender>F</Gender>
      <DateOfBirth>
        <Date>2013-06-26</Date>
      </DateOfBirth>
      <Address>
        <AddressLine1>863 VDWQLC NDUK</AddressLine1>
        <City>ZYAHSEJ</City>
        <StateProvince>WA</StateProvince>
        <PostalCode>07152</PostalCode>
      </Address>
    </Patient>
    <OtherMedicationDate>
      <OtherMedicationDate>
        <Date>1900-01-01</Date>
      </OtherMedicationDate>
      <OtherMedicationDateQualifier>SoldDate</OtherMedicationDateQualifier>
    </OtherMedicationDate>
  </MedicationDispensed>
  <RequestedDates>
    <StartDate>
      <Date>2020-03-25</Date>
    </StartDate>
    <EndDate>
      <Date>2020-12-09</Date>
    </EndDate>
  </RequestedDates>
  <PDMPStatesResponded>
    <PDMPStates>
      <StateProvince>NV</StateProvince>
      <ReasonCode>DK</ReasonCode>
    </PDMPStates>
  </PDMPStatesResponded>
</RxHistoryResponse>
</Body>

```

```
</Message>
```

### 8.9.2 Interstate: Multiple Patients Matched (for Picklist) Response

```
<?xml version="1.0" encoding="UTF-8" standalone="yes"?>
<Message DatatypesVersion="20170715" TransportVersion="20170715" TransactionDomain="SCRIPT"
TransactionVersion="20170715" StructuresVersion="20170715" ECLVersion="20170715">
  <Header>
    <To Qualifier="ZZZ">hie</To>
    <From Qualifier="ZZZ">cures</From>
    <MessageID>9d3131b9-5136-4952-905f-57a51cb2b21</MessageID>
    <RelatesToMessageID> INTERSTATE-PAR-REQUEST-001</RelatesToMessageID>
    <SentTime>2021-06-03T06:45:12.622-07:00</SentTime>
    <SenderSoftware>
      <SenderSoftwareDeveloper>CURES</SenderSoftwareDeveloper>
      <SenderSoftwareProduct>CURES</SenderSoftwareProduct>
      <SenderSoftwareVersionRelease>1.0</SenderSoftwareVersionRelease>
    </SenderSoftware>
  </Header>
  <Body>
    <RxHistoryResponse>
      <Response>
        <Denied/>
      </Response>
      <BenefitsCoordination>
        <Consent>Y</Consent>
      </BenefitsCoordination>
      <Patient>
        <HumanPatient>
          <Name>
            <LastName>AUFSMVQQ</LastName>
            <FirstName>EHXW Q2</FirstName>
          </Name>
          <Gender>U</Gender>
          <DateOfBirth>
            <Date>2013-06-26</Date>
          </DateOfBirth>
        </HumanPatient>
      </Patient>
      <MedicationDispensed>
        <DrugDescription>Use Patient Account Number(s) from this response to get a PAR via the /IEWS/prescriptions web
service.</DrugDescription>
        <Quantity>
          <Value>0</Value>
          <CodeListQualifier>87</CodeListQualifier>
          <QuantityUnitOfMeasure>
            <Code>AC</Code>
          </QuantityUnitOfMeasure>
        </Quantity>
        <LastFillDate>
          <Date>1900-01-01</Date>
        </LastFillDate>
        <Substitutions>0</Substitutions>
        <Note>SpeciesCode:01;RxCount:11;AnimalName: </Note>
      <Patient>
        <Identification>
          <PatientAccountNumber>ie:a6f6e9eca1aa413a955e442c133517b1</PatientAccountNumber>
        </Identification>
        <Name>
          <LastName>AUFSMVQQ</LastName>
          <FirstName>EHXW Q2</FirstName>
        </Name>
        <Gender>F</Gender>
        <DateOfBirth>
          <Date>2013-06-26</Date>
        </DateOfBirth>
      </Patient>
    </RxHistoryResponse>
  </Body>
</Message>
```

```

    <Address>
      <AddressLine1>863 VDWQLC NDUK</AddressLine1>
      <City>IZYAHSEJ</City>
      <StateProvince>CA</StateProvince>
      <PostalCode>07152</PostalCode>
    </Address>
  </Patient>
  <OtherMedicationDate>
    <OtherMedicationDate>
      <Date>1900-01-01</Date>
    </OtherMedicationDate>
    <OtherMedicationDateQualifier>SoldDate</OtherMedicationDateQualifier>
  </OtherMedicationDate>
</MedicationDispensed>
<MedicationDispensed>
  <DrugDescription>Use Patient Account Number(s) from this response to get a PAR via the /iews/prescriptions web
service.</DrugDescription>
  <Quantity>
    <Value>0</Value>
    <CodeListQualifier>87</CodeListQualifier>
    <QuantityUnitOfMeasure>
      <Code>AC</Code>
    </QuantityUnitOfMeasure>
  </Quantity>
  <LastFillDate>
    <Date>1900-01-01</Date>
  </LastFillDate>
  <Substitutions>0</Substitutions>
  <Note>SpeciesCode:02;RxCount:2;AnimalName:NOT REPORTED</Note>
<Patient>
  <Identification>
    <PatientAccountNumber>ie:0b63df291a214091aac5b4e68d350d19</PatientAccountNumber>
  </Identification>
  <Name>
    <LastName>AUFSMVQQ</LastName>
    <FirstName>EHXW Q2</FirstName>
  </Name>
  <Gender>F</Gender>
  <DateOfBirth>
    <Date>2013-06-26</Date>
  </DateOfBirth>
  <Address>
    <AddressLine1>863 VDWQLC NDUK</AddressLine1>
    <City>IZYAHSEJ</City>
    <StateProvince>CA</StateProvince>
    <PostalCode>07152</PostalCode>
  </Address>
</Patient>
  <OtherMedicationDate>
    <OtherMedicationDate>
      <Date>1900-01-01</Date>
    </OtherMedicationDate>
    <OtherMedicationDateQualifier>SoldDate</OtherMedicationDateQualifier>
  </OtherMedicationDate>
</MedicationDispensed>
<MedicationDispensed>
  <DrugDescription>Use Patient Account Number(s) from this response to get a PAR via the /iews/prescriptions web
service.</DrugDescription>
  <Quantity>
    <Value>0</Value>
    <CodeListQualifier>87</CodeListQualifier>
    <QuantityUnitOfMeasure>
      <Code>AC</Code>
    </QuantityUnitOfMeasure>
  </Quantity>
  <LastFillDate>
    <Date>1900-01-01</Date>

```

```

</LastFillDate>
<Substitutions>0</Substitutions>
<Note>SpeciesCode:01;RxCount:4;AnimalName:</Note>
<Patient>
  <Identification>
    <PatientAccountNumber>ie:78b40cb0af484d0e8163a3d7f93af69f</PatientAccountNumber>
  </Identification>
  <Name>
    <LastName>AUFMVMVQQ</LastName>
    <FirstName>EHXW Q2</FirstName>
  </Name>
  <Gender>F</Gender>
  <DateOfBirth>
    <Date>2013-06-26</Date>
  </DateOfBirth>
  <Address>
    <AddressLine1>863 VDWQLC NDUK</AddressLine1>
    <City>IZYAHSEJ</City>
    <StateProvince>CA</StateProvince>
    <PostalCode>07152</PostalCode>
  </Address>
</Patient>
<OtherMedicationDate>
  <OtherMedicationDate>
    <Date>1900-01-01</Date>
  </OtherMedicationDate>
  <OtherMedicationDateQualifier>SoldDate</OtherMedicationDateQualifier>
</OtherMedicationDate>
</MedicationDispensed>
<RequestedDates>
  <StartDate>
    <Date>2020-06-25</Date>
  </StartDate>
  <EndDate>
    <Date>2020-12-09</Date>
  </EndDate>
</RequestedDates>
<PDMPStatesResponded>
  <PDMPStates>
    <StateProvince>NV</StateProvince>
    <ReasonCode>DK</ReasonCode>
  </PDMPStates>
</PDMPStatesResponded>
</RxHistoryResponse>
</Body>
</Message>

```

### 8.9.3 Interstate: Multiple Patients Matched (for Non-Picklist) Response

```

<?xml version="1.0" encoding="UTF-8" standalone="yes"?>
<Message DatatypesVersion="20170715" TransportVersion="20170715" TransactionDomain="SCRIPT"
TransactionVersion="20170715" StructuresVersion="20170715" ECLVersion="20170715">
  <Header>
    <To Qualifier="ZZZ">hie</To>
    <From Qualifier="ZZZ">cures</From>
    <MessageID>88bc6447-84fc-491f-a602-ed81196a05b</MessageID>
    <RelatesToMessageID>INTERSTATE-PAR-REQUEST-001</RelatesToMessageID>
    <SentTime>2019-08-22T13:52:16.462-07:00</SentTime>
    <SenderSoftware>
      <SenderSoftwareDeveloper>CURES</SenderSoftwareDeveloper>
      <SenderSoftwareProduct>CURES</SenderSoftwareProduct>
      <SenderSoftwareVersionRelease>1.0</SenderSoftwareVersionRelease>
    </SenderSoftware>
  </Header>
  <Body>
    <Status>

```

```

    <Code>000</Code>
    <DescriptionCode>103</DescriptionCode>
    <Description>Multiple patient matches. Please search via https://cures.doj.ca.gov.</Description>
  </Status>
</Body>
</Message>

```

### 8.9.4 Interstate: No Patient-Prescription Result Response Sample

```

<?xml version="1.0" encoding="UTF-8" standalone="yes"?>
<Message DatatypesVersion="20170715" TransportVersion="20170715" TransactionDomain="SCRIPT"
TransactionVersion="20170715" StructuresVersion="20170715" ECLVersion="20170715">
  <Header>
    <To Qualifier="ZZZ">hie</To>
    <From Qualifier="ZZZ">cures</From>
    <MessageID>1ba9a1cf-fa9a-4b00-bc7c-a4e2c6d9bb7</MessageID>
    <RelatesToMessageID>INTERSTATE-PAR-REQUEST-001</RelatesToMessageID>
    <SentTime>2019-08-22T13:53:32.669-07:00</SentTime>
    <SenderSoftware>
      <SenderSoftwareDeveloper>CURES</SenderSoftwareDeveloper>
      <SenderSoftwareProduct>CURES</SenderSoftwareProduct>
      <SenderSoftwareVersionRelease>1.0</SenderSoftwareVersionRelease>
    </SenderSoftware>
  </Header>
  <Body>
    <Status>
      <Code>000</Code>
      <DescriptionCode>1000</DescriptionCode>
      <Description>No result found.</Description>
    </Status>
  </Body>
</Message>

```

### 8.10 /IEWS/PATIENTS: ERROR/STATUS RESPONSE SAMPLE

```

<?xml version="1.0" encoding="UTF-8" standalone="yes"?>
<Message DatatypesVersion="20170715" TransportVersion="20170715" TransactionDomain="SCRIPT"
TransactionVersion="20170715" StructuresVersion="20170715" ECLVersion="20170715">
  <Header>
    <To Qualifier="ZZZ">hie</To>
    <From Qualifier="ZZZ">cures</From>
    <MessageID>da581f72-4bec-4f30-8f52-b7f76785bfd</MessageID>
    <RelatesToMessageID>INTERSTATE-PAR-REQUEST-001</RelatesToMessageID>
    <SentTime>2019-08-22T13:55:05.694-07:00</SentTime>
  </Header>
  <Body>
    <Error>
      <Code>900</Code>
      <DescriptionCode>500</DescriptionCode>
      <Description>Invalid request or Missing data.</Description>
    </Error>
  </Body>
</Message>

```

## 9 /IEWS/PRESCRIPTIONS

### 9.1 /IEWS/PRESCRIPTIONS OVERVIEW

This web service is used when a **/iews/patients** transaction results in multiple patient matches for an entity that supports a picklist. Requests submitted to the **/iews/prescriptions** web service are submitted via a RxHistoryRequest message. The **/iews/prescriptions** transaction should follow a successful **/iews/patients** transaction to obtain a PAR (via a RxHistoryResponse message).

Each **/iews/patients** patient picklist is valid for 24 hours. After 24 hours, another **/iews/patients** transaction must be executed to obtain a valid patient picklist that can be used for the **/iews/prescriptions** transaction. The process flow for the **/iews/prescriptions**:

1. The **/iews/patients** transaction returns a patient picklist via a RxHistoryResponse message.
2. The user identifies their patient(s) from the picklist via the PatientAccountNumber data element.
3. The identified patient account number(s) are the input parameters for the **/iews/prescriptions** RxHistoryRequest message.

\* When copying over Patient Account Number, Name, Gender, and Date of Birth from picklist, if entity desires patient's address information in the **/iews/prescriptions** response, then patient's address information should be copied to the request as well.

4. The NCPDP format cannot accommodate multiple patients. If there are multiple matches from the picklist, the requesting entity must call this function multiple times, one for each match.

Upon successful processing of a RxHistoryRequest message, the method shall return a RxHistoryResponse message with the associated medication(s) dispensed. **The state the prescription(s) originated from will not be identified in the RxHistoryResponse message for Interstate data responses via /iews/prescriptions.** To view the originating state, search the patient in the CURES web application. (Refer to [CURES Data Response - Single Patient Matched](#) and [Interstate Data Response - Single Patient Matched](#) for details.)

A Status message is returned for the following conditions:

1. The picklist has expired (24 hours has lapsed since the **/iews/patients** request).
2. The Patient Account Number is invalid
3. The patient has more than 300 prescriptions

(Refer to [Status/Error Codes](#) for details.)

## 9.2 FAILED REQUEST

If there is a functional failure, the system returns a NCPDP Error or Status message (refer to [Status/Error Codes](#) for details).

## 9.3 ERRED REQUEST

If the error is related to authentication or parsing the message, the CURES IEWS returns an HTTP error.

## 9.4 /IEWS/PRESCRIPTIONS: REPORT REQUEST SAMPLE

```
<?xml version="1.0" encoding="UTF-8"?>
<Message DatatypesVersion="20170715" TransportVersion="20170715"
  TransactionVersion="20170715" StructuresVersion="20170715"
  ECLVersion="20170715" TransactionDomain="SCRIPT"
  xmlns:xsi="http://www.w3.org/2001/XMLSchema-instance">
  <Header>
    <To Qualifier="ZZZ">cures</To>
    <From Qualifier="ZZZ">hie</From>
    <MessageID>CURES-PRESCRIPTION-REQUEST-001</MessageID>
    <SentTime>2020-09-04T12:07:01Z</SentTime>
    <Security>
      <UsernameToken>
        <Username>User ID of the Requesting Entity</Username>
      </UsernameToken>
      <Sender>
        <SecondaryIdentification>HIT System Hospital/Facility</SecondaryIdentification>
        <TertiaryIdentification>Description of Facility</TertiaryIdentification>
      </Sender>
    </Security>
    <SenderSoftware>
      <SenderSoftwareDeveloper>Developer</SenderSoftwareDeveloper>
      <SenderSoftwareProduct>DOJ Client</SenderSoftwareProduct>
      <SenderSoftwareVersionRelease>1.0</SenderSoftwareVersionRelease>
    </SenderSoftware>
  </Header>
  <Body>
    <RxHistoryRequest>
      <BenefitsCoordination>
        <Consent>Y</Consent>
      </BenefitsCoordination>
      <Patient>
        <HumanPatient>
          <Identification>
            <PatientAccountNumber>984b230e0ce3461d8186ec9bfcc83799</PatientAccountNumber>
          </Identification>
          <Name>
            <LastName> AJGZBU </LastName>
            <FirstName> DRHEPA </FirstName>
          </Name>
          <Gender>F</Gender>
          <DateOfBirth>
            <Date>1952-09-10</Date>
          </DateOfBirth>
        </HumanPatient>
      </Patient>
      <Pharmacy>
        <Pharmacist>
          <Identification>
```



```

        <StateLicenseNumber>89969</StateLicenseNumber>
    </Identification>
    <Name>
        <LastName>BOSE</LastName>
        <FirstName>ADRIAN</FirstName>
    </Name>
</Pharmacist>
<BusinessName>My Testing Drug Store 92219</BusinessName>
</Pharmacy>
<RequestedDates>
    <StartDate>
        <Date>2020-06-25</Date>
    </StartDate>
    <EndDate>
        <Date>2020-12-09</Date>
    </EndDate>
</RequestedDates>
</RxHistoryRequest>
</Body>
</Message>

```

## 9.5 /IEWS/PRESCRIPTIONS: RESPONSE SAMPLE

```

<?xml version="1.0" encoding="UTF-8" standalone="yes"?>
<Message DatatypesVersion="20170715" TransportVersion="20170715" TransactionDomain="SCRIPT"
TransactionVersion="20170715" StructuresVersion="20170715" ECLVersion="20170715">
  <Header>
    <To Qualifier="ZZZ">hie</To>
    <From Qualifier="ZZZ">cures</From>
    <MessageID>43950376-49e0-4d73-bec7-e85e9976518</MessageID>
    <RelatesToMessageID>CURES-PRESCRIPTION-REQUEST-001</RelatesToMessageID>
    <SentTime>2021-06-03T04:35:05.453-07:00</SentTime>
    <SenderSoftware>
      <SenderSoftwareDeveloper>CURES</SenderSoftwareDeveloper>
      <SenderSoftwareProduct>CURES</SenderSoftwareProduct>
      <SenderSoftwareVersionRelease>1.0</SenderSoftwareVersionRelease>
    </SenderSoftware>
  </Header>
  <Body>
    <RxHistoryResponse>
      <Response>
        <Approved/>
      </Response>
      <BenefitsCoordination>
        <Consent>Y</Consent>
      </BenefitsCoordination>
      <Patient>
        <HumanPatient>
          <Identification>
            <PatientAccountNumber>984b230e0ce3461d8186ec9bfcc83799</PatientAccountNumber>
          </Identification>
          <Name>
            <LastName>AJGZBU</LastName>
            <FirstName> DRHEPA </FirstName>
          </Name>
          <Gender>F</Gender>
          <DateOfBirth>
            <Date>1952-09-10</Date>
          </DateOfBirth>
        </HumanPatient>
      </Patient>
      <MedicationDispensed>
        <DrugDescription>PHENOBARBITAL | 32.4 MG | TAB</DrugDescription>
        <DrugCoded>
          <ProductCode>
            <Code>13517011101</Code>
          </ProductCode>
        </DrugCoded>
      </MedicationDispensed>
    </RxHistoryResponse>
  </Body>
</Message>

```

```

    <Qualifier>ND</Qualifier>
  </ProductCode>
</DrugCoded>
<Quantity>
  <Value>90</Value>
  <CodeListQualifier>87</CodeListQualifier>
  <QuantityUnitOfMeasure>
    <Code>AC</Code>
  </QuantityUnitOfMeasure>
</Quantity>
<DaysSupply>60</DaysSupply>
<LastFillDate>
  <Date>2020-10-26</Date>
</LastFillDate>
<Substitutions>0</Substitutions>
<Note>SpeciesCode:02;RefillsAuthorized:0</Note>
<Pharmacy>
  <Identification>
    <NCPDPID>-</NCPDPID>
    <StateLicenseNumber>PHY41245</StateLicenseNumber>
    <NPI>-</NPI>
  </Identification>
  <BusinessName>YBCMWG QVZAAVML 0282</BusinessName>
  <Address>
    <AddressLine1>5385 PR. ZTXDFI ZNMUFA UZRK OK DOP</AddressLine1>
    <City>CLEARWATER</City>
    <StateProvince>FL</StateProvince>
    <PostalCode>33763</PostalCode>
  </Address>
</Pharmacy>
<Prescriber>
  <NonVeterinarian>
    <Identification>
      <DEANumber>OE7182862</DEANumber>
      <NPI>-</NPI>
    </Identification>
    <Name>
      <LastName>B Nahtanoj, O Nahtanoj</LastName>
      <FirstName>B Nahtanoj, O Nahtanoj</FirstName>
    </Name>
    <Address>
      <City>ALIOL</City>
    </Address>
  </NonVeterinarian>
</Prescriber>
<HistorySource xsi:type="HistorySourceWithPayment" xmlns:xsi="http://www.w3.org/2001/XMLSchema-instance">
  <Source>
    <SourceQualifier>P2</SourceQualifier>
  </Source>
  <SourceReference>1744226</SourceReference>
  <FillNumber>00</FillNumber>
  <PaymentType>1</PaymentType>
</HistorySource>
<OtherMedicationDate>
  <OtherMedicationDate>
    <Date>2017-11-01</Date>
  </OtherMedicationDate>
  <OtherMedicationDateQualifier>SoldDate</OtherMedicationDateQualifier>
</OtherMedicationDate>
</MedicationDispensed>
<MedicationDispensed>
  <DrugDescription>PHENOBARBITAL|32.4 MG|TAB </DrugDescription>
  <DrugCoded>
    <ProductCode>
      <Code>13517011101</Code>
      <Qualifier>ND</Qualifier>
    </ProductCode>

```

```

</DrugCoded>
<Quantity>
  <Value>90</Value>
  <CodeListQualifier>87</CodeListQualifier>
  <QuantityUnitOfMeasure>
    <Code>AC</Code>
  </QuantityUnitOfMeasure>
</Quantity>
<DaysSupply>60</DaysSupply>
<LastFillDate>
  <Date>2020-10-26</Date>
</LastFillDate>
<Substitutions>0</Substitutions>
<Note>SpeciesCode:02;RefillsAuthorized:0</Note>
<Pharmacy>
  <Identification>
    <NCPDPID>--</NCPDPID>
    <StateLicenseNumber>PHY41245</StateLicenseNumber>
    <NPI>--</NPI>
  </Identification>
  <BusinessName>YBCMVG QVZAAVML 0282</BusinessName>
  <Address>
    <AddressLine1>5385 PR. ZTXDFI ZNMUFA UZRK OK DOP</AddressLine1>
    <City>CLEARWATER</City>
    <StateProvince>FL</StateProvince>
    <PostalCode>33763</PostalCode>
  </Address>
</Pharmacy>
<Prescriber>
  <NonVeterinarian>
    <Identification>
      <DEANumber>WQ8185775</DEANumber>
      <NPI>--</NPI>
    </Identification>
    <Name>
      <LastName>UQVBU, OKQJOVU, D (KAZ)</LastName>
      <FirstName>UQVBU, OKQJOVU, D (KAZ)</FirstName>
    </Name>
    <Address>
      <City>CMYAI</City>
    </Address>
  </NonVeterinarian>
</Prescriber>
<HistorySource xsi:type="HistorySourceWithPayment" xmlns:xsi="http://www.w3.org/2001/XMLSchema-instance">
  <Source>
    <SourceQualifier>P2</SourceQualifier>
  </Source>
  <SourceReference>1789303</SourceReference>
  <FillNumber>00</FillNumber>
  <PaymentType>1</PaymentType>
</HistorySource>
<OtherMedicationDate>
  <OtherMedicationDate>
    <Date>2018-03-24</Date>
  </OtherMedicationDate>
  <OtherMedicationDateQualifier>SoldDate</OtherMedicationDateQualifier>
</OtherMedicationDate>
</MedicationDispensed>
<MedicationDispensed>
  <DrugDescription>PHENOBARBITAL|32.4 MG|TAB </DrugDescription>
  <DrugCoded>
    <ProductCode>
      <Code>13517011101</Code>
      <Qualifier>ND</Qualifier>
    </ProductCode>
  </DrugCoded>
<Quantity>

```

```

    <Value>90</Value>
    <CodeListQualifier>87</CodeListQualifier>
    <QuantityUnitOfMeasure>
      <Code>AC</Code>
    </QuantityUnitOfMeasure>
  </Quantity>
  <DaysSupply>60</DaysSupply>
  <LastFillDate>
    <Date>2020-12-09</Date>
  </LastFillDate>
  <Substitutions>0</Substitutions>
  <Note>SpeciesCode:01;RefillsAuthorized:0</Note>
  <Pharmacy>
    <Identification>
      <NCPDPID>-</NCPDPID>
      <StateLicenseNumber>PHY41245</StateLicenseNumber>
      <NPI>-</NPI>
    </Identification>
    <BusinessName>YBCMVG QVZAAVML 0282</BusinessName>
    <Address>
      <AddressLine1>5385 PR. ZTXDFI ZNMUFA UZRK OK DOP</AddressLine1>
      <City>CLEARWATER</City>
      <StateProvince>FL</StateProvince>
      <PostalCode>33763</PostalCode>
    </Address>
  </Pharmacy>
  <Prescriber>
    <NonVeterinarian>
      <Identification>
        <DEANumber>BT2052866</DEANumber>
        <NPI>-</NPI>
      </Identification>
      <Name>
        <LastName>AKUDKZ, IZTLNHJ MWZ</LastName>
        <FirstName>AKUDKZ, IZTLNHJ MWZ</FirstName>
      </Name>
      <Address>
        <City>ALIOL</City>
      </Address>
    </NonVeterinarian>
  </Prescriber>
  <HistorySource xsi:type="HistorySourceWithPayment" xmlns:xsi="http://www.w3.org/2001/XMLSchema-instance">
    <Source>
      <SourceQualifier>P2</SourceQualifier>
    </Source>
    <SourceReference>1744226</SourceReference>
    <FillNumber>00</FillNumber>
    <PaymentType>1</PaymentType>
  </HistorySource>
  <OtherMedicationDate>
    <OtherMedicationDate>
      <Date>2017-11-01</Date>
    </OtherMedicationDate>
    <OtherMedicationDateQualifier>SoldDate</OtherMedicationDateQualifier>
  </OtherMedicationDate>
</MedicationDispensed>
<MedicationDispensed>
  <DrugDescription>PHENOBARBITAL|32.4 MG|TAB</DrugDescription>
  <DrugCoded>
    <ProductCode>
      <Code>13517011101</Code>
      <Qualifier>ND</Qualifier>
    </ProductCode>
  </DrugCoded>
  <Quantity>
    <Value>90</Value>
    <CodeListQualifier>87</CodeListQualifier>

```

```

    <QuantityUnitOfMeasure>
      <Code>AC</Code>
    </QuantityUnitOfMeasure>
  </Quantity>
  <DaysSupply>60</DaysSupply>
  <LastFillDate>
    <Date>2020-12-09</Date>
  </LastFillDate>
  <Substitutions>0</Substitutions>
  <Note>SpeciesCode:01;RefillsAuthorized:0</Note>
  <Pharmacy>
    <Identification>
      <NCPDPID>-</NCPDPID>
      <StateLicenseNumber>PHY41245</StateLicenseNumber>
      <NPI>-</NPI>
    </Identification>
    <BusinessName>YBCMVG QVZAAVML 0282</BusinessName>
    <Address>
      <AddressLine1>5385 PR. ZTXDFI ZNMUFA UZRK OK DOP</AddressLine1>
      <City>CLEARWATER</City>
      <StateProvince>FL</StateProvince>
      <PostalCode>33763</PostalCode>
    </Address>
  </Pharmacy>
  <Prescriber>
    <NonVeterinarian>
      <Identification>
        <DEANumber>BT2052866</DEANumber>
        <NPI>-</NPI>
      </Identification>
      <Name>
        <LastName>AKUDKZ, IZTLNHJ MWZ</LastName>
        <FirstName>AKUDKZ, IZTLNHJ MWZ</FirstName>
      </Name>
      <Address>
        <City>ALIOL</City>
      </Address>
    </NonVeterinarian>
  </Prescriber>
  <HistorySource xsi:type="HistorySourceWithPayment" xmlns:xsi="http://www.w3.org/2001/XMLSchema-instance">
    <Source>
      <SourceQualifier>P2</SourceQualifier>
    </Source>
    <SourceReference>1744226</SourceReference>
    <FillNumber>00</FillNumber>
    <PaymentType>1</PaymentType>
  </HistorySource>
  <OtherMedicationDate>
    <OtherMedicationDate>
      <Date>2017-11-01</Date>
    </OtherMedicationDate>
    <OtherMedicationDateQualifier>SoldDate</OtherMedicationDateQualifier>
  </OtherMedicationDate>
</MedicationDispensed>
<MedicationDispensed>
  <DrugDescription>PHENOBARBITAL | 32.4 MG | TAB</DrugDescription>
  <DrugCoded>
    <ProductCode>
      <Code>13517011101</Code>
      <Qualifier>ND</Qualifier>
    </ProductCode>
  </DrugCoded>
  <Quantity>
    <Value>90</Value>
    <CodeListQualifier>87</CodeListQualifier>
  </QuantityUnitOfMeasure>
    <Code>AC</Code>

```

```

    </QuantityUnitOfMeasure>
  </Quantity>
  <DaysSupply>60</DaysSupply>
  <LastFillDate>
    <Date>2020-12-09</Date>
  </LastFillDate>
  <Substitutions>0</Substitutions>
  <Note>SpeciesCode:01;RefillsAuthorized:0</Note>
  <Pharmacy>
    <Identification>
      <NCPDPID>-</NCPDPID>
      <StateLicenseNumber>PHY41245</StateLicenseNumber>
      <NPI>-</NPI>
    </Identification>
    <BusinessName>YBCMVG QVZAAVML 0282</BusinessName>
    <Address>
      <AddressLine1>5385 PR. ZTXDFI ZNMUFA UZRK OK DOP</AddressLine1>
      <City>CLEARWATER</City>
      <StateProvince>FL</StateProvince>
      <PostalCode>33763</PostalCode>
    </Address>
  </Pharmacy>
  <Prescriber>
    <NonVeterinarian>
      <Identification>
        <DEANumber>BT2052866</DEANumber>
        <NPI>-</NPI>
      </Identification>
      <Name>
        <LastName>AKUDKZ, IZTLNHJ MWZ</LastName>
        <FirstName>AKUDKZ, IZTLNHJ MWZ</FirstName>
      </Name>
      <Address>
        <City>ALIOL</City>
      </Address>
    </NonVeterinarian>
  </Prescriber>
  <HistorySource xsi:type="HistorySourceWithPayment" xmlns:xsi="http://www.w3.org/2001/XMLSchema-instance">
    <Source>
      <SourceQualifier>P2</SourceQualifier>
    </Source>
    <SourceReference>1744226</SourceReference>
    <FillNumber>00</FillNumber>
    <PaymentType>1</PaymentType>
  </HistorySource>
  <OtherMedicationDate>
    <OtherMedicationDate>
      <Date>2017-11-01</Date>
    </OtherMedicationDate>
    <OtherMedicationDateQualifier>SoldDate</OtherMedicationDateQualifier>
  </OtherMedicationDate>
</MedicationDispensed>
<RequestedDates>
  <StartDate>
    <Date>2020-06-25</Date>
  </StartDate>
  <EndDate>
    <Date>2020-12-09</Date>
  </EndDate>
</RequestedDates>
</RxHistoryResponse>
</Body>
</Message>

```

## **9.6 /IEWS/PRESCRIPTIONS: RESPONSE ERROR/STATUS SAMPLE**

This is the same as the sample responses in [/iews/patients section](#).

## 10 /IEWS/USERS-STATUS

### 10.1 /IEWS/USERS-STATUS OVERVIEW

The `/iews/users-status` web service returns the CURES account status of a Prescriber, Non-DEA Practitioner, or Pharmacist. Upon successful execution, this method should return an NCPDP Status message. If there is a failure, an NCPDP Error or Status message is returned with the associated error/status code, description code, and description (refer to [Status/Error Codes](#) for details). If the error is related to authentication or parsing the message, an HTTP error is returned.

### 10.2 /IEWS/USERS-STATUS: REQUEST SAMPLE

```
<?xml version="1.0" encoding="UTF-8"?>
<Message DatatypesVersion="20170715" TransportVersion="20170715" TransactionVersion="20170715"
StructuresVersion="20170715" ECLVersion="20170715" TransactionDomain="SCRIPT"
xmlns:xsi="http://www.w3.org/2001/XMLSchema-instance">
  <Header>
    <To Qualifier="ZZZ">cures</To>
    <From Qualifier="ZZZ">hie</From>
    <MessageID> CHECK-USER-STATUS-001</MessageID>
    <SentTime>2018-06-04T16:00:47Z</SentTime>
    <Security>
      <UsernameToken>
        <Username>User ID of the Requesting Entity</Username>
      </UsernameToken>
      <Sender>
        <SecondaryIdentification>HIT System Hospital/Facility</SecondaryIdentification>
        <TertiaryIdentification>Description of Facility</TertiaryIdentification>
      </Sender>
    </Security>
    <SenderSoftware>
      <SenderSoftwareDeveloper>Developer</SenderSoftwareDeveloper>
      <SenderSoftwareProduct>DOJ Client</SenderSoftwareProduct>
      <SenderSoftwareVersionRelease>1.0</SenderSoftwareVersionRelease>
    </SenderSoftware>
  </Header>
  <Body>
    <Verify>
      <VerifyStatus>
        <Code>010</Code>
        <Description>S;11729;STAR;STEVEN</Description>
      </VerifyStatus>
    </Verify>
  </Body>
</Message>
```

### 10.3 /IEWS/USERS-STATUS: RESPONSE SAMPLE

```
<?xml version="1.0" encoding="UTF-8" standalone="yes"?>
<Message DatatypesVersion="20170715" TransportVersion="20170715" TransactionDomain="SCRIPT"
TransactionVersion="20170715" StructuresVersion="20170715" ECLVersion="20170715">
  <Header>
    <To Qualifier="ZZZ">hie</To>
    <From Qualifier="ZZZ">cures</From>
    <MessageID>9a298037-1608-4940-abdc-ff47a38538a</MessageID>
    <RelatesToMessageID> CHECK-USER-STATUS-001</RelatesToMessageID>
    <SentTime>2019-08-15T09:51:01.729-07:00</SentTime>
    <SenderSoftware>
      <SenderSoftwareDeveloper>CURES</SenderSoftwareDeveloper>
      <SenderSoftwareProduct>CURES</SenderSoftwareProduct>
      <SenderSoftwareVersionRelease>1.0</SenderSoftwareVersionRelease>
```



```
</SenderSoftware>
</Header>
<Body>
  <Status>
    <Code>000</Code>
    <DescriptionCode>134</DescriptionCode>
    <Description>Active status, user has access.</Description>
  </Status>
</Body>
</Message>
```

#### 10.4 /IEWS/USERS-STATUS: RESPONSE ERROR SAMPLE

This is the same as the sample response in the [/iews/patients section](#).

## 11 /IEWS/ENTITY-STATUS

### 11.1 /IEWS/ENTITY-STATUS OVERVIEW

The `/iews/entity-status` web service returns the HIT system's account status. Upon successful execution, this method should return an NCPDP Status message. If there is a failure, an NCPDP Error or Status message is returned with the associated error/status code, description code, and description (refer to [Status/Error Codes](#) for details). If the error is related to authentication or parsing the message, an HTTP error is returned.

### 11.2 /IEWS/ENTITY-STATUS: REQUEST SAMPLE

```
<?xml version="1.0" encoding="UTF-8"?>
<Message DatatypesVersion="20170715" TransportVersion="20170715" TransactionVersion="20170715"
StructuresVersion="20170715" ECLVersion="20170715" TransactionDomain="SCRIPT"
xmlns:xsi="http://www.w3.org/2001/XMLSchema-instance">
  <Header>
    <To Qualifier="ZZZ">cures</To>
    <From Qualifier="ZZZ">hie</From>
    <MessageID>CHECK-ENTITY-V2017071-001</MessageID>
    <SentTime>2018-06-04T16:00:47Z</SentTime>
    <Security>
      <UsernameToken>
        <Username>dr.joe@acme.com</Username>
      </UsernameToken>
      <Sender>
        <SecondaryIdentification>CURES</SecondaryIdentification>
        <TertiaryIdentification>Description of Facility</TertiaryIdentification>
      </Sender>
    </Security>
    <SenderSoftware>
      <SenderSoftwareDeveloper>Developer</SenderSoftwareDeveloper>
      <SenderSoftwareProduct>DOJ Client</SenderSoftwareProduct>
      <SenderSoftwareVersionRelease>1.0</SenderSoftwareVersionRelease>
    </SenderSoftware>
  </Header>
  <Body>
    <Verify>
      <VerifyStatus>
        <Code>010</Code>
        <Description>REQUEST ENTITY STATUS</Description>
      </VerifyStatus>
    </Verify>
  </Body>
</Message>
```

### 11.3 /IEWS/ENTITY-STATUS: RESPONSE SAMPLE

```
<?xml version="1.0" encoding="UTF-8" standalone="yes"?>
<Message DatatypesVersion="20170715" TransportVersion="20170715" TransactionDomain="SCRIPT"
TransactionVersion="20170715" StructuresVersion="20170715" ECLVersion="20170715">
  <Header>
    <To Qualifier="ZZZ">hie</To>
    <From Qualifier="ZZZ">cures</From>
    <MessageID>ab4fab46-30a6-45bc-bf9b-547dfccc4d3</MessageID>
    <RelatesToMessageID> CHECK-ENTITY-V2017071-001</RelatesToMessageID>
    <SentTime>2019-08-15T09:55:00.474-07:00</SentTime>
  <SenderSoftware>
```

```
<SenderSoftwareDeveloper>CURES</SenderSoftwareDeveloper>
<SenderSoftwareProduct>CURES</SenderSoftwareProduct>
<SenderSoftwareVersionRelease>1.0</SenderSoftwareVersionRelease>
</SenderSoftware>
</Header>
<Body>
  <Status>
    <Code>000</Code>
    <DescriptionCode>008</DescriptionCode>
    <Description>Requesting Entity account in good standing.</Description>
  </Status>
</Body>
</Message>
```

#### 11.4 /IEWS/ENTITY-STATUS: RESPONSE ERROR SAMPLE

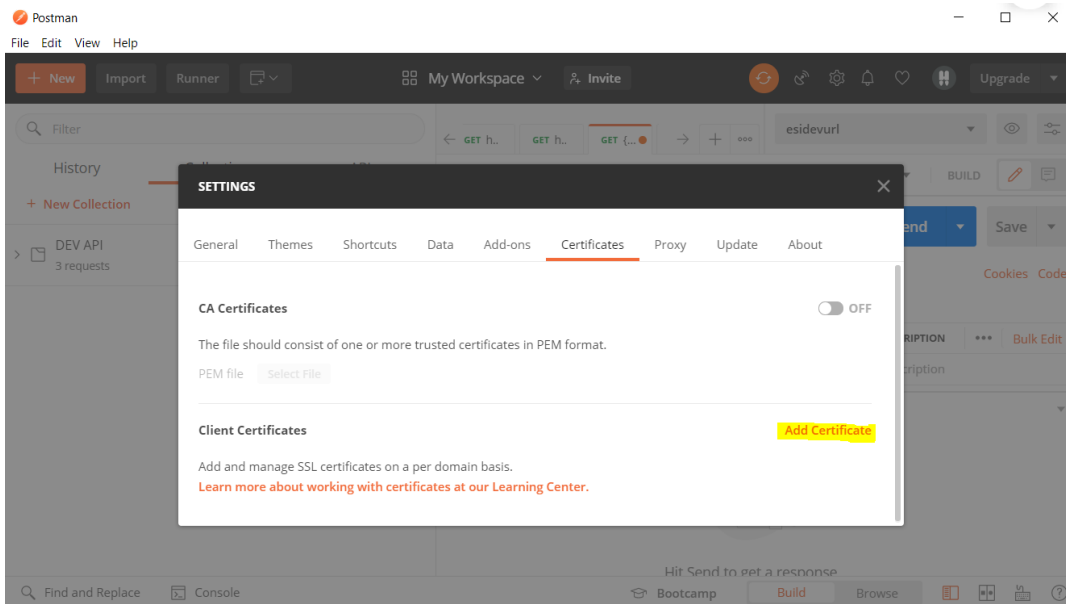
This is the same as the sample response in the [/iews/patients section](#).

## 12 TESTING

Prior to using the CURES IEWS, HIT systems will complete two phases of testing. The first phase will be focused on connectivity. HIT systems will provide client certificates to CURES and configure their system with associated client certificates. To verify the certificates are working properly, HIT systems can conduct a connection/authentication test with CURES.

Postman software, one of the tools that you can use for testing, is a free software that you may download from <https://www.postman.com/downloads/>. Here is the example for the setup and test.

1. Open Postman application and click the settings icon to open the SETTINGS page.



2. Then click the “Add Certificate” button and fill out the “Host”, “KEY file”, and “Passphrase”. Click “Add”.

The screenshot shows a 'SETTINGS' dialog box with a dark header and a close button (X) in the top right. Below the header is a navigation bar with tabs: General, Themes, Shortcuts, Data, Add-ons, Certificates (highlighted with a red underline), Proxy, Update, and About. The main content area is titled 'Client Certificates > Add Certificate'. It contains several input fields: 'Host' with the value 'https://cures-opt-uat.stg.doj.ca.gov' and a port field with '443'; 'CRT file' with a 'Select File' button; 'KEY file' with the value 'moudev\_final.p12' and a close button (X); 'PFX file' with a 'Select File' button; and 'Passphrase' with a masked input field (dots) and a copy icon. At the bottom right, there are two buttons: 'Cancel' and 'Add'.

Once the certificates are established, requests can be sent to CURES IEWS.

After connectivity has been established, the HIT system can move on to functional testing. Each HIT system will be given test cases and a list of test Prescribers, Non-DEA Practitioner, and Pharmacists accounts to use for testing. The HIT system can use the test accounts to test all of the REST endpoints. The HIT system must execute each test case provided, and provide the request and response XMLs for each test case. The test cases will be submitted to DOJ for review before Production access is granted.

## 13 APPENDIX - CODED VALUES

### 13.1 PAYMENT TYPE CODES

Code	Description
1	Private Pay
2	Medicaid
3	Medicare
4	Commercial Insurance
5	Military Installations and VA
6	Worker's Compensation
7	Indian Nations
99	Other

### 13.2 SPECIES CODES

Animal dispensation records may return when a search is conducted for human patient dispensations.

Code	Description
01	Human
02	Animal

### 13.3 INTERSTATE RESPONSE CODES

Code	Description
DJ	No Data – There is a response indicating that no data was found for the search criteria provided in the search request.
DK	Prescription Data
DL	Disallowed – There was a permission problem of some type performing this request against this destination.
DM	Error- This response indicates a processing error in performing this request.