

CITY OF CULVER CITY

REPARATIONS: A JOURNEY TOWARD REPAIR





OVERVIEW

BRIEF HISTORY OF CULVER CITY

CURRENT EFFORTS TOWARD REPAIR

HISTORICAL CONTEXT STUDY

NEXT STEPS

QUESTIONS

A SUNDOWN HISTORY



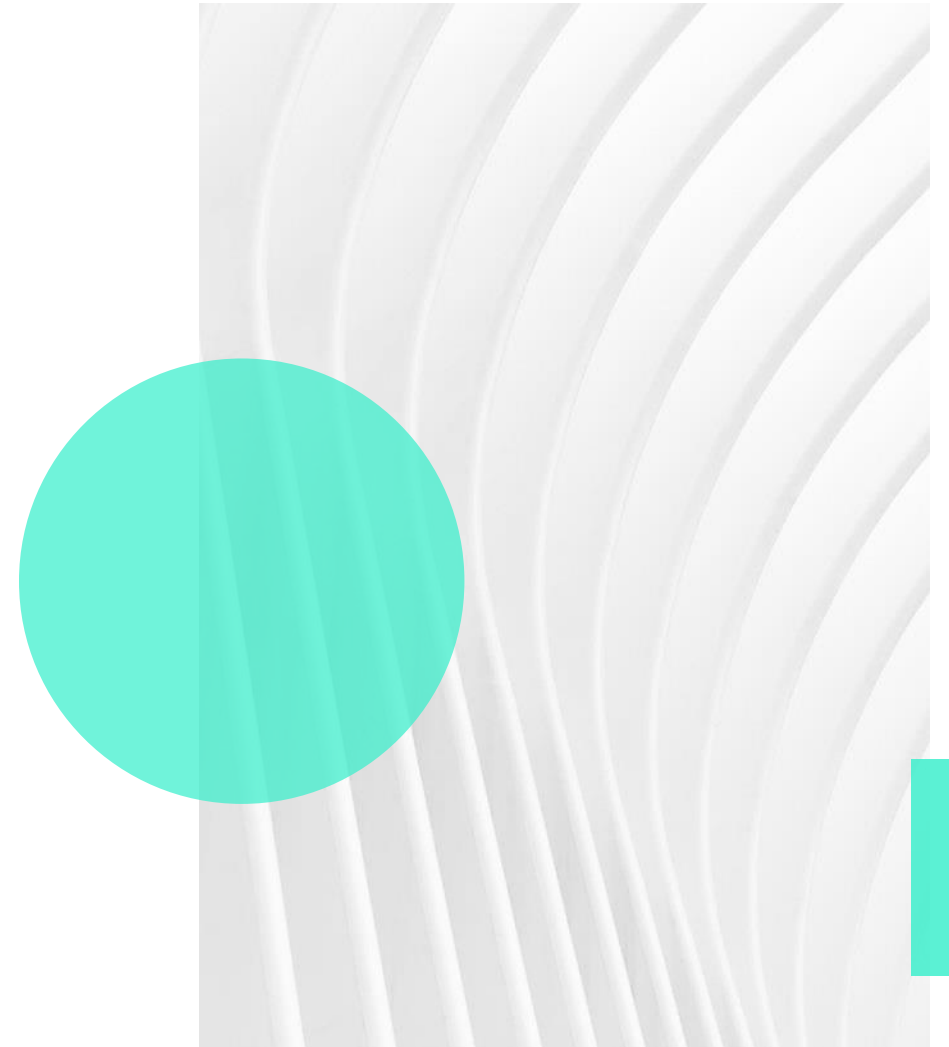
Incorporated in 1917, Culver City was once a sundown town, founded by Harry Culver, a real estate developer who aspired to build a “model white little city”, building into his city plans “proper restrictions” and supplemental deed restrictions to prevent “incompatible ownership occupancy”.¹ Culver sought to embed the practices of race restrictive covenants and redlining to keep the neighborhoods all white. The KKK and other white supremacist groups established themselves and held meetings in Culver City.

The aftermath of these policy decisions is still evident today and is reflective in homeownership rates among Black and brown people.

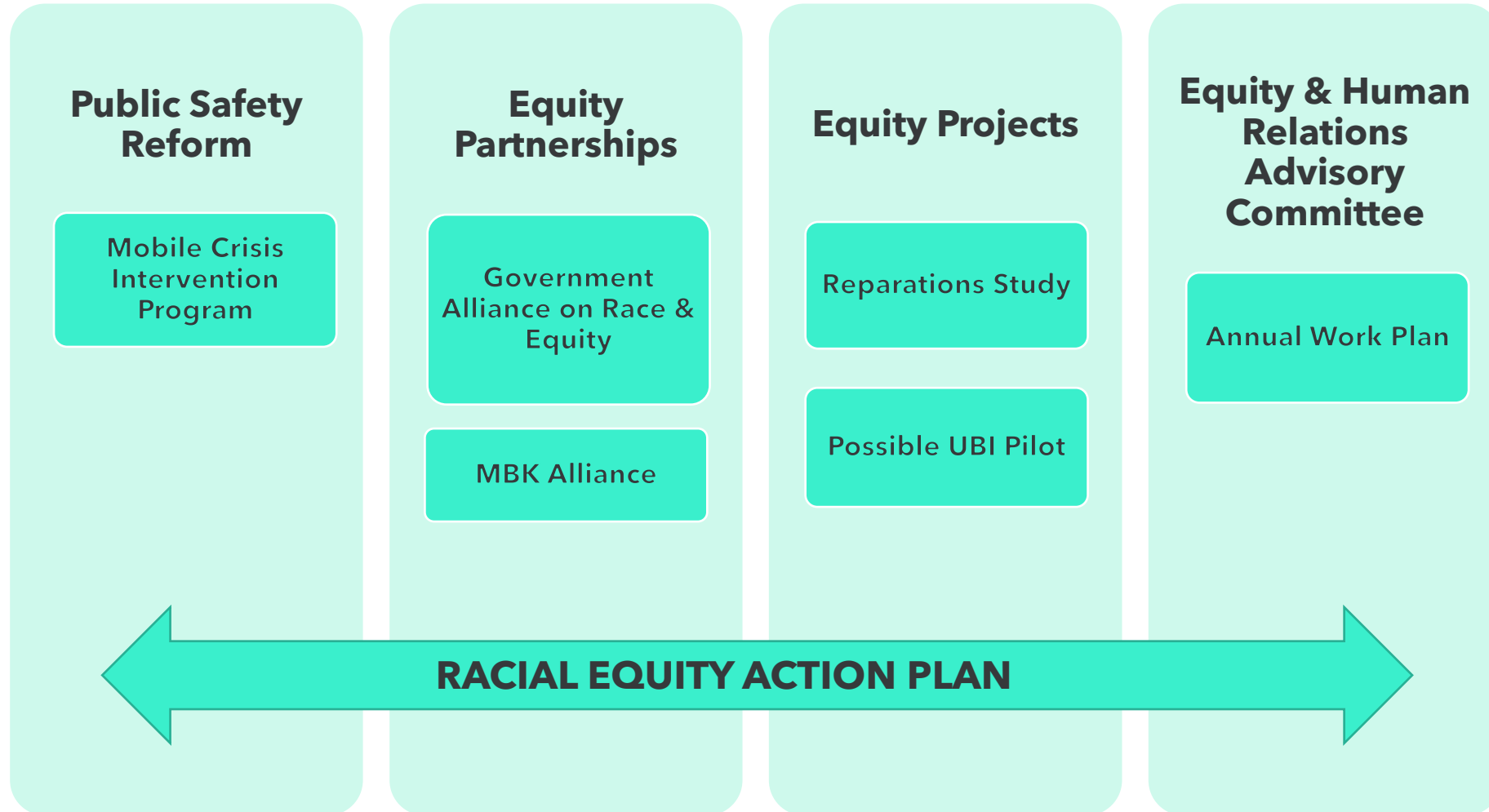
¹ Kent, J. (2019, April 5). *The Hidden History of Racism in Culver City*. Streetsblog Los Angeles. <https://la.streetsblog.org/2019/04/05/the-hidden-history-of-culver-city-racism/>

CULVER CITY TODAY

With the legacy of these policy practices at the forefront of our minds, Culver City endeavors to envision a future where all residents, housed and unhoused, experience belonging and well-being and can live free from harm. To achieve this vision, the City seeks to undo the institutional racism baked into its current policies and practices. In order to move toward repair, the City has taken its first steps to face its history, understand the harm caused, and take meaningful steps toward healing.



CURRENT EFFORTS



TIMELINE



**JUN
2021**

City Council adopted a **Resolution Acknowledging Racial History of Culver City**

**AUG
2022**

Presentation to City Council on possible reparations programs and next steps

**SEPT
2022**

City Council authorized the preparation of RFR to conduct a **historical context study**

**JAN
2023**

Anticipated start of **research and data collection** for study

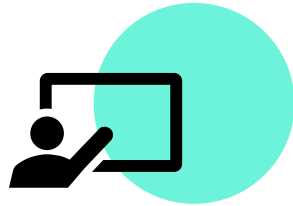


“

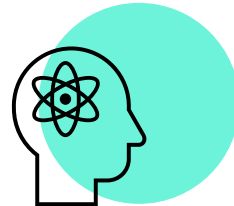
HISTORICAL CONTEXT STUDY

A historical context study is different from a historical context statement. This study will identify the history of indigenous peoples and communities of color in Culver City, the history of racially and discriminatory policies that contributed to the shifts of Culver City's population over time and provide analysis for how these policies have shaped the City's current landscape and the experiences of its inhabitants. The outcomes of the study will inform future reparations programs for Culver City.

STUDY EFFORTS



**STAKEHOLDER
ENGAGEMENT &
PUBLIC
PRESENTATIONS**



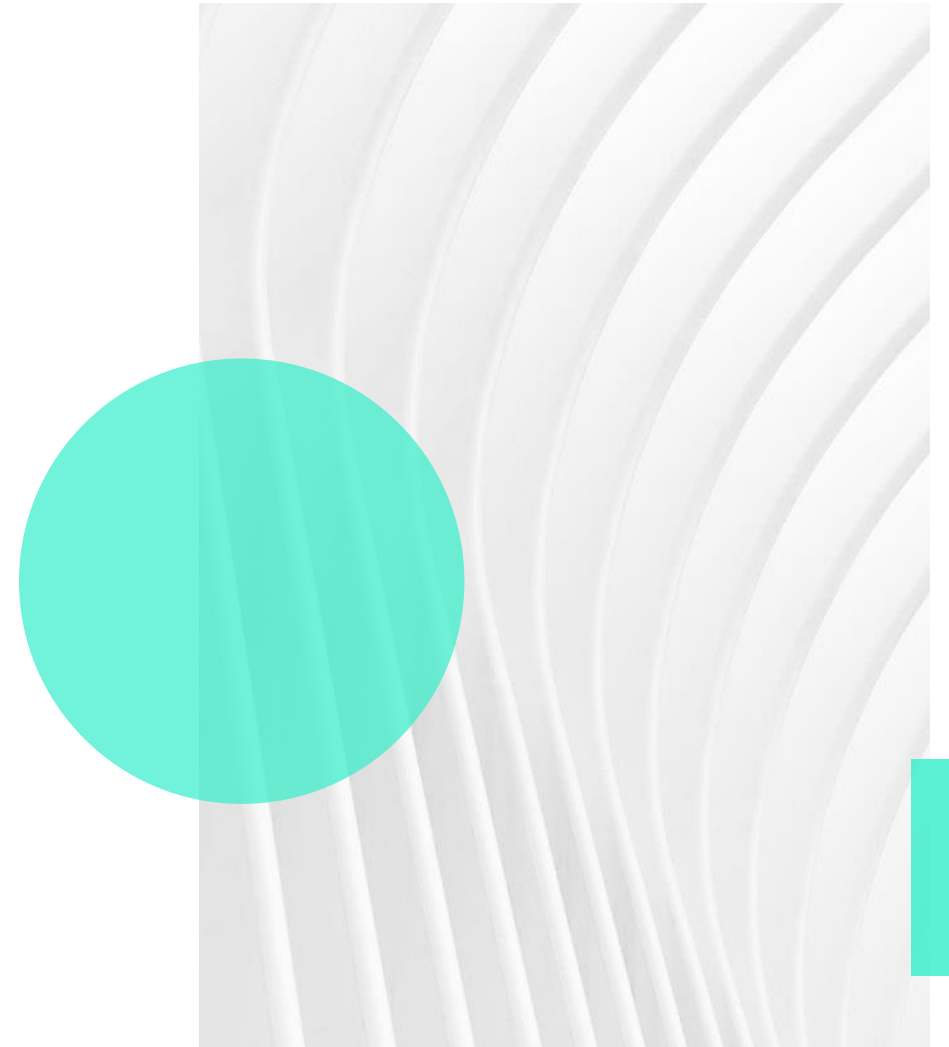
**PRIMARY &
SECONDARY
SOURCE
RESEARCH**



**HISTORICAL
CONTEXT
STUDY AND
REPORTS**

CHALLENGES

Local politics are not immune from national politics. As we journey toward reparations and repair, we also stay vigilant to the growth of harassment and threats directed at government officials², increased polarization, and the proliferation of misinformation. To successfully see through future reparations programs for Culver City, we continue to center our most vulnerable communities, create systems of care, and practice envisioning a future where all people thrive, experience well-being, and are free from harm. We also continue to collaborate and partner with local, state, and federal agencies doing similar work.



² National League of Cities. (2022, June 24). *New Report: Harassment, Threats and Violence Directed at Local Elected Officials Rising at an Alarming Rate*. National League of Cities. <https://www.nlc.org/post/2021/11/10/new-report-harassment-threats-and-violence-directed-at-local-elected-officials-rising-at-an-alarming-rate/>

THANK YOU

Helen Chin, Equity Analyst, helen.chin@culvercity.org

Onyx Jones, Assistant City Manager, onyx.jones@culvercity.org